



MARCH PUMPS

1819 PICKWICK AVE., GLENVIEW, IL 60026-1306, U.S.A
PHONE: (847) 729-5300 - FAX: (847) 729-7062
WWW.MARCHPUMP.COM

DESCRIPTION:

Series 5.5 are centrifugal magnetic drive pumps, eliminating the need for a shaft seal. Pumps can be serviced with a screwdriver. Screws should be tightened in sequence and uniformly. Do not over tighten the screws or you may crush the plastic housing bosses. See the parts list for a breakdown of parts.

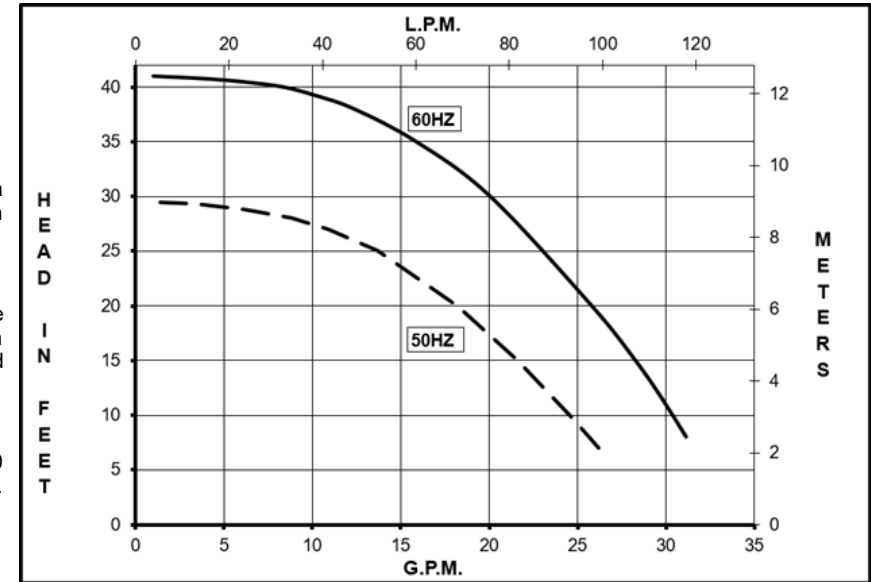
OPERATION:

Pumps are not self-priming, lack a suction lift, and thus require a **flooded suction**. Pumps **cannot be run dry** because the impeller requires the liquid being pumped for lubrication. The direction of motor rotation should be clockwise when facing the inlet of the pump. For liquids with a specific gravity greater than water, have a higher viscosity, or for elevated temperatures, a trimmed impeller may be necessary. For application assistance, contact March Pump.

ELECTRICAL:

TE-5.5-MD pumps are dual voltage 1 phase 115/230 60Hz (110/220 50 Hz) or dual voltage 230/460 60 Hz (190/380 50 Hz), 3 phase, TEFC. Motors are totally enclosed fan cooled and are U.L. listed as well as rated for continuous operation. All motors have a conduit box for electrical connections.

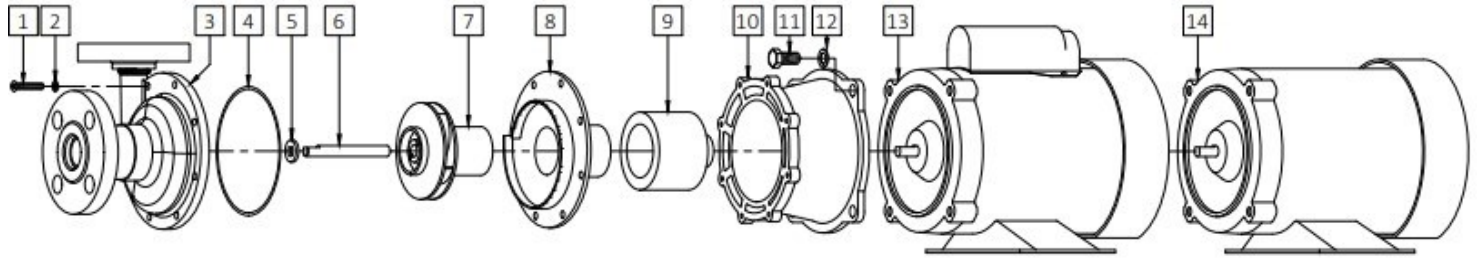
Flanged TE-5.5S-MD



Specifications		TE-5.5S-MD
Product	1 Phase	0151-0158-0100
	3 Phase	0151-0159-0100
Inlet-Outlet		1" FPT - 3/4" MPT
Max Internal Pressure		200 psi (1378 kPa)
Max Liquid Temperature		250F (121C)

	60Hz										50Hz									
	Max Flow		Max Head			Electrical					Max Flow		Max Head			Electrical				
Model	GPM	LPM	FT	PSI	M	Ph	V	A	HP	kW	GPM	LPM	Feet	PSI	M	Ph	V	A	HP	kW
Flanged TE-5.5S-MD	30	114	41	17.8	12.5	1	115/230	5.3/2.6	1/3	0.25	27	102	29.5	12.8	9	1	110/220	5.7/2.8	1/3	0.25
Flanged TE-5.5S-MD	30	114	41	17.8	12.5	3	230/460	1.2/0.6	1/3	0.25	27	102	29.5	12.8	9	3	190/380	1.2/0.6	1/3	0.25

All specifications & data are based on pumping water & are intended as a guideline only. Specifications may vary with different motors.



NOTE: When attaching the Drive Magnet to the motor shaft, position the drive magnet 1/16 inch below the face of the Motor Bracket.

Flanged TE-5.5S-MD					
1	0135-0181-1000	8	#10-32 x 1-1/8" Long Screw (Stainless)	Materials in contact with the solution	
2	0151-0016-1000	8	#10 Lock Washer (Stainless)	Flanged TE-5.5S-MD	316 SS, Carbon Ceramic, Viton
3	0151-0068-0100	1	Flanged Front Housing (316 SS)	NOTE: Contact Factory for other materials and/or parts not listed. Explosion proof and special voltage motors are available upon special order. <u>WARRANTY:</u> https://www.marchpump.com/about/warranty/	
4	0153-0015-1000	1	3/32" CS x 4-7/16" OD "O" Ring (Viton)		
5	0155-0009-1000	1	Thrust Washer (Ceramic)		
6	0153-0007-1000	1	Shaft (Ceramic)		
7	0151-0001-0400	1	Impeller (316 SS) with Carbon Bushing		
8	0151-0003-0010	1	Rear Housing (316 SS)		
9	0151-0061-0200	1	Drive Magnet		
10	0151-0090-0100	1	Motor Bracket		
11	0155-0017-1000	4	3/8-16 x 3/4" Long Screw (Stainless)		
12	0155-0019-1000	4	3/8" ID x 5/8" OD Washer (Stainless)		
13	0151-0119-1000	1	1 Phase TEFC Motor		
14	0151-0039-1000	1	3 Phase TEFC Motor		

For the General Installation Manual, see this link <https://www.marchpump.com/wp-content/uploads/2019/07/march-pump-general-installation-guide-0750-040.pdf>

or Scan QR Code



0151-0162-1100 Rev 8.20.2025