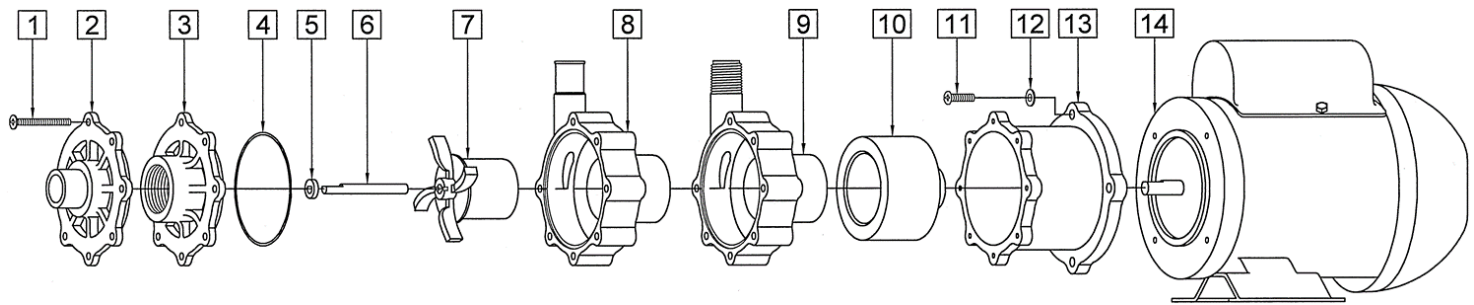




	60Hz										50Hz									
	Max Flow		Max Head			Electrical					Max Flow		Max Head			Electrical				
Model	GPM	LPM	FT	PSI	M	Ph	V	A	HP	kW	GPM	LPM	Feet	PSI	M	Ph	V	A	HP	kW
TE-5KC-MD	18	68.1	29	12.6	8.85	1	115/230	2.6/1.3	1/5	0.149	15.9	60.5	20.7	8.96	6.3	1	110/220	2.4/1.2	0.16	0.119
All specifications & data are based on pumping water & are intended as a guideline only. Specifications may vary with different motors.																				



NOTE: When attaching the Drive Magnet to the motor shaft, position the face of the Drive Magnet 3/32 inch below the face of the Motor Bracket.

TE-5KC-MD

Item	Part Number	QTY REQ	Description
1	0150-0021-1000	7	#8-32 x 1-3/4 LG Screw (Stainless)
3	0150-0282-1000	1	Cover with 1" FPT Inlet (Carbon Filled Kynar)
4	0750-0986-1000	1	0.078 CS x 2.834 ID O-Ring (Viton)
5	0130-0028-1000	1	Thrust Washer (Ceramic)
6	0130-0024-1000	1	Shaft (Ceramic)
7	0150-0283-0200	1	Impeller (Carbon Filled Kynar)
9	0150-0281-0100	1	Rear Housing with 1/2" MPT Outlet and Ceramic Thrust Washer (Carbon Filled Kynar/Ceramic)
10	0150-0176-0300	1	Drive Magnet
11	0150-0050-1000	4	#10-32 x 3/4 LG. Screw (Stainless)
12	0150-0051-1000	4	#10 Washer (Stainless)
13	0150-0070-0100	1	Motor Bracket (Plastic)
14	0150-0213-1000	1	Motor (Weg), TEFC, 115/230V, 50/60Hz

NOTE: Contact Factory for other materials and/or parts not listed.
Special voltage motors are available upon special order.

Materials in contact with the liquid: Carbon Filled Kynar, Viton, Ceramic.

WARRANTY: <https://www.marchpump.com/about/warranty/>

For the General Installation Manual, see this link <https://www.marchpump.com/wp-content/uploads/2019/07/march-pump-general-installation-guide-0750-040.pdf>

Or scan QR Code



0150-0060-1700-Rev 8.21.2025