



MARCH PUMPS

1819 PICKWICK AVE., GLENVIEW, IL 60026-1306, U.S.A
 PHONE: (847) 729-5300 - FAX: (847) 729-7062
 WWW.MARCHPUMP.COM

DESCRIPTION:

Series 335-K-MD pumps are centrifugal Kynar magnetic drive pumps, eliminating the need for a shaft seal. Pumps can be serviced with an adjustable wrench. See the parts list for a breakdown of parts.

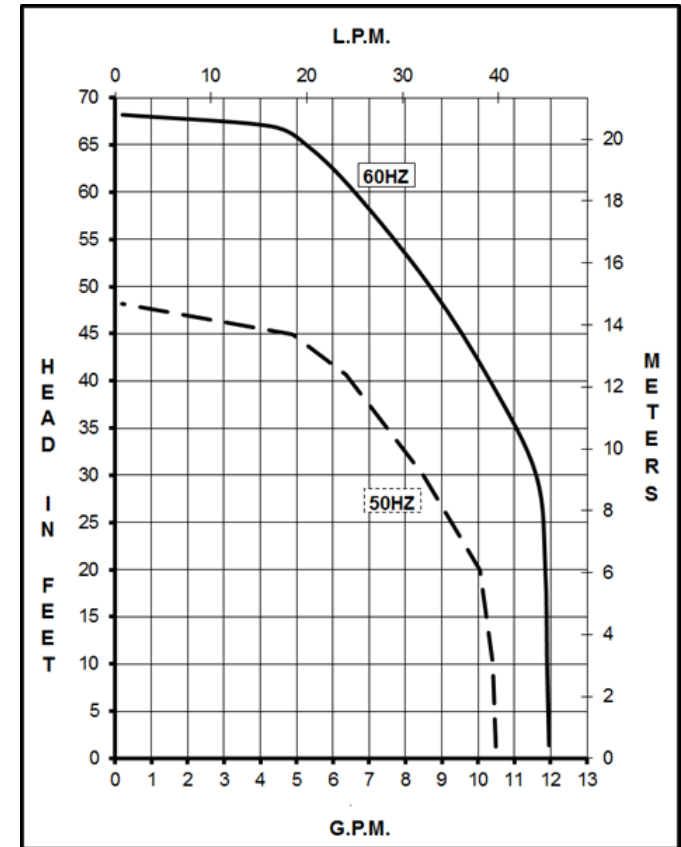
OPERATION:

Pumps are not self-priming, lack a suction lift, and thus require a **flooded suction**. Pumps **cannot be run dry** because the impeller requires the liquid being pumped for lubrication. The direction of motor rotation should be clockwise when facing the inlet of the pump. For liquids with a specific gravity greater than water, have a higher viscosity, or for elevated temperatures, a trimmed impeller may be necessary. For application assistance, contact March Pump.

ELECTRICAL:

335 pumps are dual voltage 1 phase 50/60 Hz or dual voltage 3 phase 50/60 Hz. Specific Voltage information can be found below. Motors are totally enclosed fan cooled and are U.L. listed as well as rated for continuous operation. All motors have a conduit box for electrical connections.

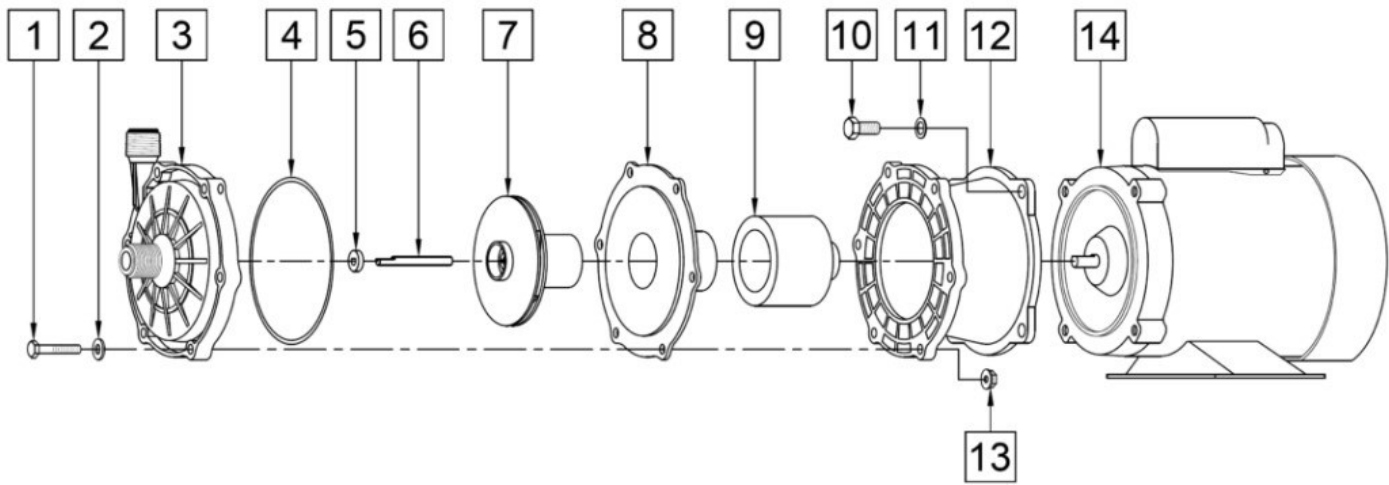
335-K-MD



Specifications		335-K-MD, 1/3HP	335-K-MD, 1/2HP
Product	1Ph	0335-0045-0100	0335-0047-0100
	3Ph	0335-0046-0100	0335-0048-0100
Inlet-Outlet		3/4" MPT-3/4" MPT	3/4" MPT-3/4" MPT
Max Internal Pressure		60PSI (413 kPa)	60PSI (413 kPa)
Max Liquid Temperature		200F (93C)	200F (93C)

Model	60Hz											50Hz										
	Max Flow		Max Head			Electrical						Max Flow		Max Head			Electrical					
	GPM	LPM	FT	PSI	M	Ph	V	A	HP	kW	RPM	GPM	LPM	Feet	PSI	M	Ph	V	A	HP	kW	RPM
335-K	12	45.4	68	29.5	20.7	1	115/230	5.3/2.6	1/3	0.249	3450	10	37.8	47.9	20.8	14.6	1	110/220	5.7/2.8	1/3	0.249	2850
335-K	12	45.4	68	29.5	20.7	3	230/460	1.2/0.6	1/3	0.249	3450	10	37.8	47.9	20.8	14.6	3	190/380	1.2/0.6	1/4	0.186	2850
335-K	12	45.4	68	29.5	20.7	1	115/230	7.5/3.7	1/2	0.37	3450	10	37.8	47.9	20.8	14.6	1	115/230	8.6/4.3	0.375	0.28	2850
335-K	12	45.4	68	29.5	20.7	3	230/460	1.7/0.8	1/2	0.37	3450	10	37.8	47.9	20.8	14.6	3	190/380	1.9/0.9	1/2	0.37	2850

All specifications & data are based on pumping water & are intended as a guideline only. Specifications may vary with different motors.



335-K-MD

When Attaching the drive magnet to the motor shaft, position the face of the drive magnet assembly flush with the face of the motor bracket.

Item	Part Number	QTY REQ	Description
1	0153-0011-1000	6	1/4-20 x 1-1/2" Long Screw (Stainless Steel)
2	0157-0023-1000	6	1/4ID x 5/8"OD Washer (Stainless Steel)
3	0335-0037-1000	1	Front Housing 3/4"MPT (Glass Filled Kynar)
4	0335-0009-1000	1	1/8 CS x 5OD" O-Ring (Viton)
5	0821-0079-1000	1	Thrust Washer (Ceramic)
6	0130-0024-1000	1	Shaft (Ceramic)
7	0335-0044-0200	1	Impeller (Glass Filled Kynar)
8	0335-0038-0100	1	Rear Housing with Thrust Washer (Glass Filled Kynar)
9A	0335-0017-0000	1	Drive Magnet (0.375 Inch Bore), for use with 1/3HP Motor
9B	0335-0019-0000		Drive Magnet (0.625 Inch Bore), for use with 1/2HP Motor
10	0155-0017-1000	4	3/8-16 x 3/4 LG. Screw (Stainless Steel)
11	0155-0019-1000	4	3/8 ID x 5/8"OD Washer (Stainless Steel)
12	0335-0010-1000	1	Motor Bracket (Plastic)
13	0156-0053-1000	6	1/4-20" Hex Nut (Stainless)
14A	0151-0119-1000	1	Motor, TEFC, 1Ph, 1/3HP
14A	0151-0039-1000	1	Motor, TEFC, 3Ph, 1/3HP
14B	0335-0029-0000	1	Motor, TEFC, 1Ph, 1/2HP
14B	0335-0030-0000	1	Motor, TEFC, 3Ph, 1/2HP

NOTE: Contact Factory for other materials and/or parts not listed.

Special voltage motors are available upon special order.

Materials in contact with the liquid: Glass Filled Kynar, Viton, Ceramic

LIMITED WARRANTY: March pumps are guaranteed only against defects in workmanship or materials for a period of one year from date of manufacture pumping water. For the complete warranty and to register online go to www.marchpump.com/warranty-registration

For the General Installation Manual, see this link <https://www.marchpump.com/wp-content/uploads/2019/07/march-pump-general-installation-guide-0750-040.pdf>

or Scan QR Code

