



MARCH PUMPS

1819 PICKWICK AVE., GLENVIEW, IL 60026-1306, U.S.A
PHONE: (847) 729-5300 - FAX: (847) 729-7062
WWW.MARCHPUMP.COM

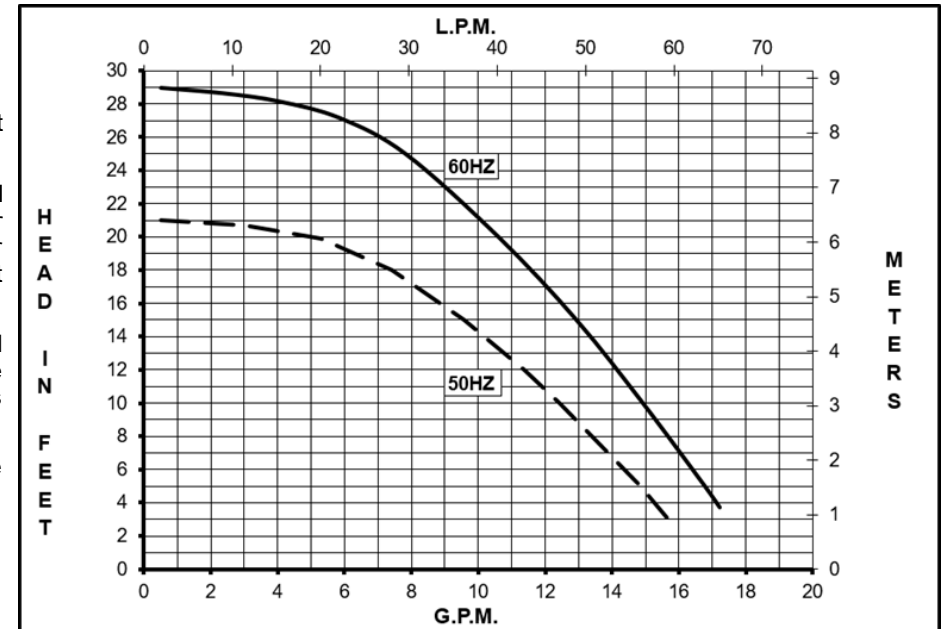
DESCRIPTION: [Series 5 are centrifugal magnetic drive pumps](#), eliminating the need for a shaft seal. All are serviceable with a screwdriver.

OPERATION: Pumps are not self-priming, lack a suction lift, and thus require a **flooded suction**. Pumps **cannot be run dry** because the impeller requires the liquid being pumped for lubrication. For liquids with a specific gravity greater than water, have a higher viscosity, or for elevated temperatures, a trimmed impeller may be necessary. For application assistance, contact March Pump.

ELECTRICAL: Models are dual voltage 115/230V for 60hz and 110/220V 50hz. The standard motor has a conduit box. A motor with 115V 72 inch cord or 230V 72 inch cord, are options. The motor is U.L. listed motor and rated for continuous duty. The pump is rated IP44. The pump is Ignition Protected per SAE J1171 and ISO 8846.

CE: Pumps marked with CE have been modified to be listed as CE. Contact March for more information.

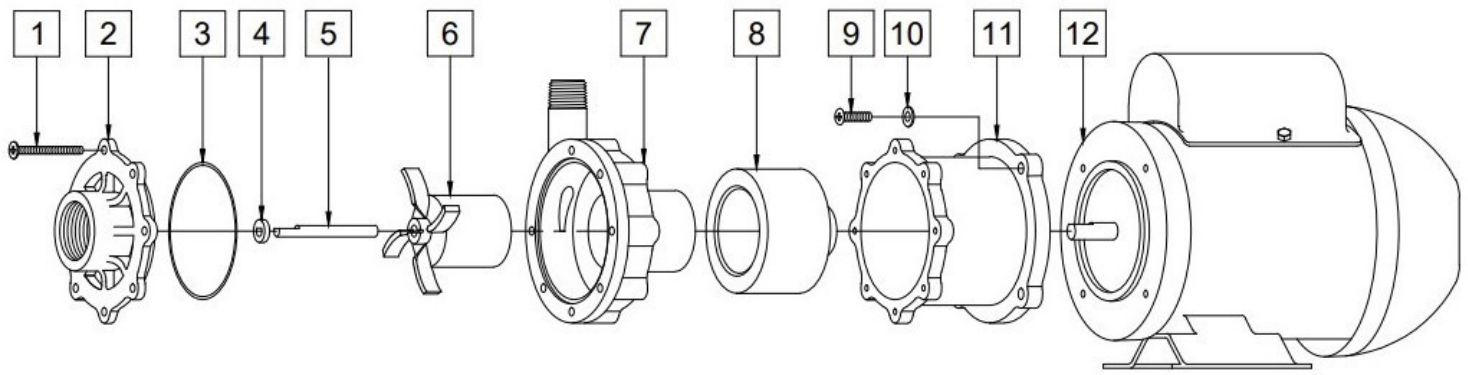
TE-5M-MD and TE-5MNS-MD Marked with CE



Specifications		TE-5M-MD Marked with CE	TE-5MNS-MD Marked with CE
Product	1Ph	0150-0265-0100	0150-0268-0100
With Conduit Box			
With 115V Cord	1 Ph	0150-0266-0100	0150-0269-0100
With 230V Cord	1 Ph	0150-0267-0100	0150-0270-0100
Inlet-Outlet		1"FPT-1/2"MPT	1"FPT-1/2"MPT
Max Internal Pressure		50PSI (344 kPa)	50PSI (344 kPa)
Max Liquid Temperature		190F (87C)	190F (87C)

	60Hz										50Hz									
	Max Flow		Max Head			Electrical					Max Flow		Max Head			Electrical				
Model	GPM	LPM	FT	PSI	M	Ph	V	A	HP	kW	GPM	LPM	Feet	PSI	M	Ph	V	A	HP	kW
TE-5M-MD	18	68.1	29	12.6	8.85	1	115/230	2.6/1.3	1/5	0.149	15.9	60.5	20.7	8.96	6.3	1	110/220	2.4/1.2	0.16	0.119
TE-5MNS-MD	18	68.1	29	12.6	8.85	1	115/230	2.6/1.3	1/5	0.149	15.9	60.5	20.7	8.96	6.3	1	110/220	2.4/1.2	0.16	0.119

All specifications & data are based on pumping water & are intended as a guideline only. Specifications may vary with different motors.



NOTE: When attaching the Drive Magnet to the motor shaft, position the face of the Drive Magnet 3/32 inch below the face of the Motor Bracket.

TE-5M-MD Marked with CE

Item	Part Number	QTY REQ	Description
1	0150-0021-1000	7	#8-32 x 1-3/4 LG Screw (Stainless)
2	0150-248-1000	1	Cover with 1" FPT Inlet (Noryl)
3	0750-0987-1000	1	0.078 CS x 2.834 ID O-Ring (Buna N)
4	0130-0028-1000	1	Thrust Washer (Ceramic)
5	0130-0024-1000	1	Shaft (Ceramic)
6	0150-0030-0700	1	Impeller with Carbon Bushing(Polypropylene, Carbon, Ceramic Magnet)
7	0150-0031-0100	1	Rear Housing with 1/2" MPT Outlet and Ceramic Thrust Washer (Polypropylene/Ceramic)
8	0150-0176-0300	1	Drive Magnet
9	0150-0050-1000	4	#10-32 x 3/4 LG. Screw (Stainless)
10	0150-0051-1000	4	#10 Washer (Stainless)
11	0150-0070-0100	1	Motor Bracket (Plastic)
12A	0150-0213-1000	1	Motor (Weg), TEFC, 115/230V, 50/60Hz
12B	0150-0272-0100	1	Motor (Weg), TEFC, 115V 72 Inch Cord, Marked with CE
12C	0150-0273-0100	1	Motor (Weg), TEFC, 230V 72 Inch Cord, Marked with CE

TE-5MNS-MD Marked with CE

Item	Part Number	QTY REQ	Description
1	0150-0021-1000	7	#8-32 x 1-3/4 LG Screw (Stainless)
2	0150-248-1000	1	Cover with 1" FPT Inlet (Noryl)
3	0750-0987-1000	1	0.078 CS x 2.834 ID O-Ring (Buna N)
4	0130-0028-1000	1	Thrust Washer (Ceramic)
5	0130-0024-1000	1	Shaft (Ceramic)
6	0150-0030-0700	1	Impeller with Carbon Bushing(Polypropylene, Carbon, Ceramic Magnet)
7	0150-0110-0010	1	Rear Housing with 1/2" MPT Outlet (316 Stainless Steel)
8	0150-0176-0300	1	Drive Magnet
9	0150-0050-1000	4	#10-32 x 3/4 LG. Screw (Stainless)
10	0150-0051-1000	4	#10 Washer (Stainless)
11	0150-0070-0100	1	Motor Bracket (Plastic)
12A	0150-0213-1000	1	Motor (Weg), TEFC, 115/230V, 50/60Hz
12B	0150-0272-0100	1	Motor (Weg), TEFC, 115V 72 Inch Cord, Marked with CE
12C	0150-0273-0100	1	Motor (Weg), TEFC, 230V 72 Inch Cord, Marked with CE

NOTE: Contact Factory for other materials and/or parts not listed.

Special voltage motors are available upon special order.

Materials in contact with the liquid: TE-5M-MD : Polypropylene, Noryl, Buna N, Carbon, Ceramic, Ceramic Magnet.

TE-5MNS-MD: Polypropylene, Noryl, Buna N, 316 Stainless Steel, Carbon, Ceramic, Ceramic Magnet.

WARRANTY: <https://www.marchpump.com/about/warranty/>

For the General Installation Manual, see this link <https://www.marchpump.com/wp-content/uploads/2019/07/march-pump-general-installation-guide-0750-040.pdf>

Or scan QR Code



0150-0275-1000 revised 8.22.2025