



MARCH PUMPS

1819 PICKWICK AVE., GLENVIEW, IL 60026-1306, U.S.A
 PHONE: (847) 729-5300 - FAX: (847) 729-7062
 WWW.MARCHPUMP.COM

DESCRIPTION:

The LC-2M-MD is a centrifugal magnetic drive pumps, eliminating the need for a shaft seal. The “LC” model is hermetically encapsulated for complete moisture protection. The pump is rated IP67.

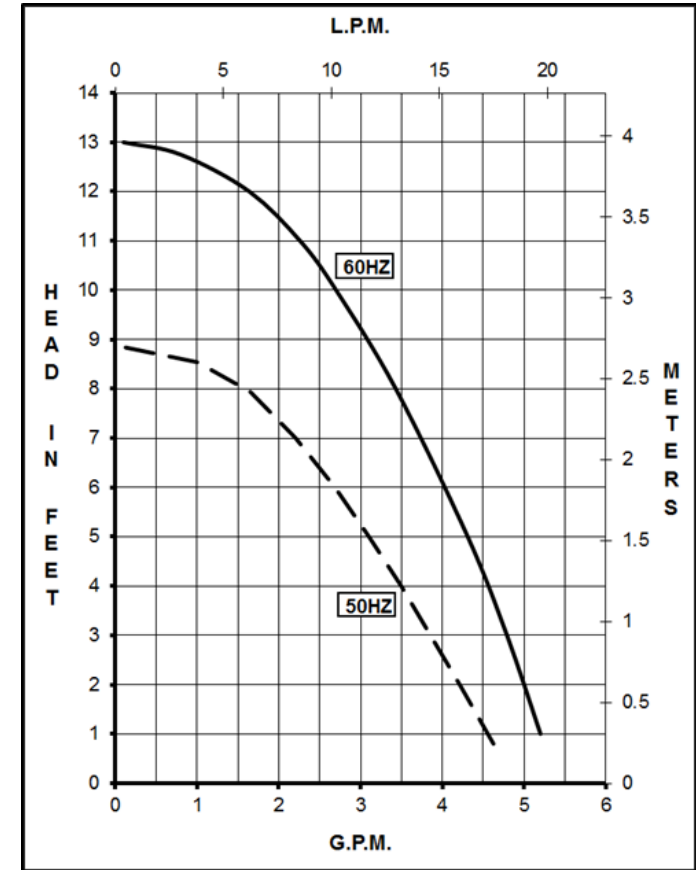
OPERATION:

Pumps are not self-priming, lack a suction lift, and thus require a **flooded suction**. Pumps **cannot be run dry** because the impeller requires the liquid being pumped for lubrication. For liquids with a specific gravity greater than water, have a higher viscosity, or for elevated temperatures, a trimmed impeller may be necessary. For application assistance, contact March Pump.

ELECTRICAL:

Motors are available in different electrical configurations such as 115V 50/60HZ or 230V 50/60HZ 1 phase.
 The motors are U.L. listed and rated for continuous duty. The pump is Ignition Protected per SAE J1171 and ISO 8846.
 The LC-2M-MD has a 6 foot cord.

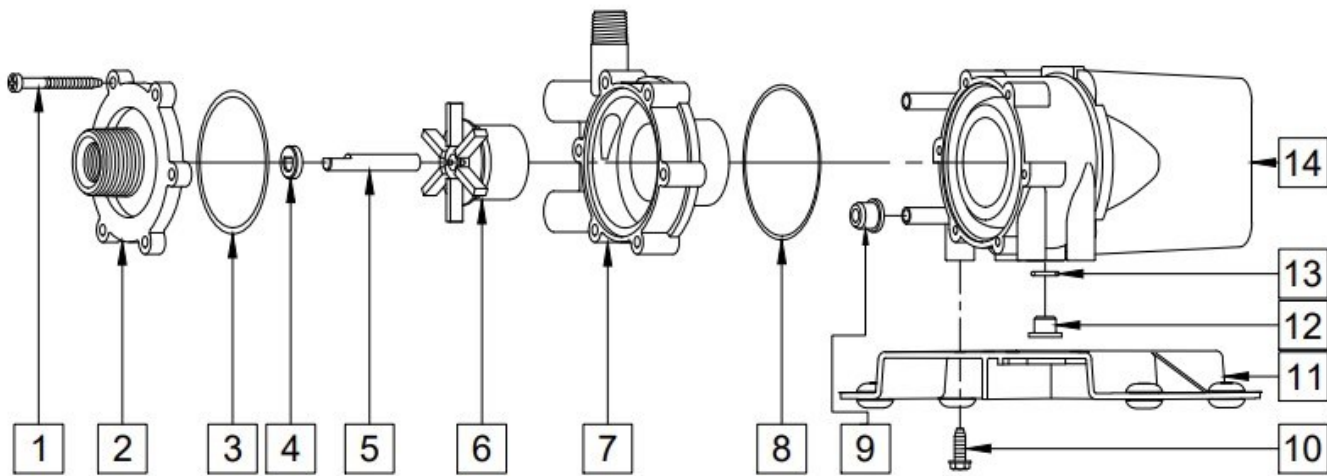
LC-2M-MD



Specifications		LC-2M-MD
Product	115V	0125-0141-0100
	230V	0125-0142-0100
Inlet-Outlet		3/8" FPT & 3/4" MPT-1/4" MPT
Max Internal Pressure		25 psi (172 kPa)
Max Liquid Temperature		130F (54C)

Model	60Hz												50Hz											
	Max Flow		Max Head			Electrical							Max Flow		Max Head			Electrical						
	GPM	LPM	FT	PSI	M	Ph	V	A	HP	kW	RPM	GPM	LPM	Feet	PSI	M	Ph	V	A	HP	kW	RPM		
LC-2M-MD	5	18.9	13	5.7	4	1	115/230	0.92/0.53	1/50 & 1/40	0.015/0.019	3450	4.89	18.5	8.8	3.8	2.7	1	115/230	1.1/0.72	1/55	0.014	2850		

All specifications & data are based on pumping water & are intended as a guideline only. Specifications may vary with different motors.



NOTE: When attaching the Drive Magnet to the motor shaft, position the face of the Drive Magnet 1/16 inch below the face of the Motor Bracket.

LC-2M-MD

Item	Part Number	QTY REQ	Description
1	0115-0062-1000	6	#10-32 x 1" Long Screw (Stainless)
2	0125-0056-1000	1	Cover with 3/8" FPT x 3/4" MPT Inlet (Polypropylene)
3	0125-006-1000	1	3/32" CS x 2-3/16" OD "O" Ring (Buna N)
4	0130-0028-1000	1	Thrust Washer (Ceramic)
5	0125-0125-1000	1	Shaft (Stainless)
6	0125-0055-0100	1	Impeller with Bare Ceramic Magnet (Polypropylene)
7	0125-0131-0100	1	Rear Housing & Plug with 1/4" MPT Outlet (Nylon)
8	0125-0124-1000	1	1/16" CS x 2-3/8" OD Bracket "O" Ring (Buna N)
9	0125-0007-1000	2	Cooling Tube Seal (Buna N)
10	0125-0130-1000	4	#8-18 x 1/2" Long Self-Tapping Screw (Stainless)
11	0125-0113-0100	1	Marine Base (Polypropylene)
12	0125-0110-1000	1	Motor Bracket Plug (Polypropylene)
13	0210-0008-1000	1	1/16" CS x 7/16" OD "O" Ring (Viton)
14	Not Available	1	Epoxy Motor Assembly

Materials in contact with the solution : Polypropylene, Ceramic, Buna N, Stainless Steel, Nylon, Ceramic Magnet. When submerged, also: Epoxy, Buna N, Cord

LIMITED WARRANTY: March pumps are guaranteed only against defects in workmanship or materials for a period of one year from date of manufacture pumping water. For the complete warranty and to register online go to www.marchpump.com/warranty-registration

NOTE: Contact Factory for other materials and/or parts not listed.

Special voltage motors are available upon special order.

For the General Installation Manual, see this link <https://www.marchpump.com/wp-content/uploads/2019/07/march-pump-general-installation-guide-0750-040.pdf>
Or Scan QR Code



0125-0143-1000