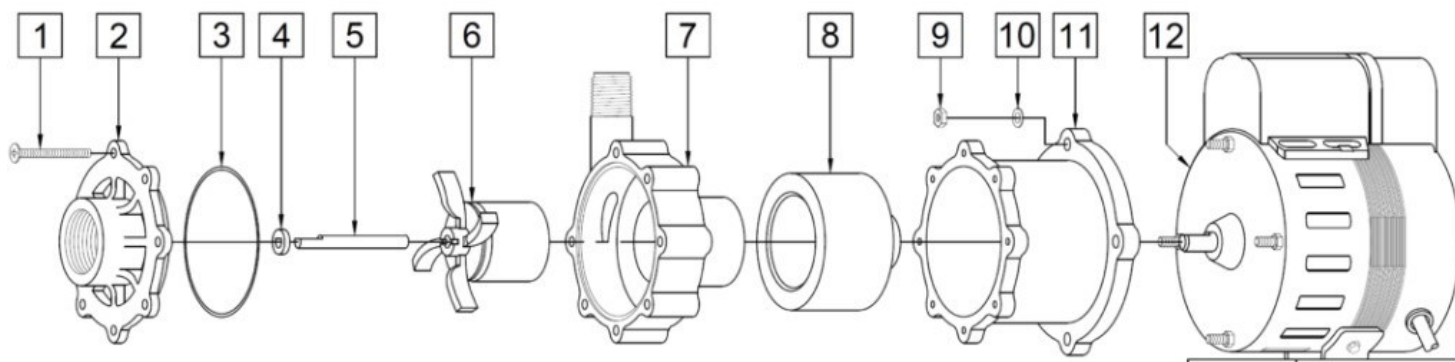





	60Hz										50Hz									
	Max Flow		Max Head			Electrical					Max Flow		Max Head			Electrical				
Model	GPM	LPM	FT	PSI	M	Ph	V	A	HP	kW	GPM	LPM	Feet	PSI	M	Ph	V	A	HP	kW
AC-5M-MD	17	64.4	27	11.7	8.2	1	115 or 230	2.1 or 1.0	1/8	0.093	15.9	60	19.7	8.5	6	1	115 or 230	2.1 or 1.0	1/8	0.093
All specifications & data are based on pumping water & are intended as a guideline only. Specifications may vary with different motors.																				



AC-5M-MD			
Item	Part Number	QTY REQ	Description
1	0150-0021-1000	7	#8-32 x 1-3/4 Lg. (Stainless)
2	0150-0248-1000	1	Cover with 1" FPT Inlet (Noryl)
3	0750-0987-1000	1	0.078 CS x 2.834 ID O Ring (Buna N)
4	0130-0028-1000	1	Thrust Washer (Ceramic)
5	0130-0024-1000	1	Shaft (Ceramic)
6	0150-0030-0700	1	Impeller with Carbon Bushing and Ceramic Magnet (Polypropylene, Carbon, Ceramic Magnet)
7	0150-0031-0100	1	Rear Housing with 1/2" MPT Outlet and Ceramic Thrust Washer (Polypropylene and Ceramic)
8	0150-0081-0100	1	Drive Magnet
9	0625-0024-1000	4	#10-32 Hex Nut (Stainless)
10	0802-0006-1000	4	#10 Washer (Stainless)
11	0150-0070-0100	1	Motor Bracket (Plastic)
12	0150-0027-1000	1	Motor, 115V, 50/60Hz
12	0150-0040-1000	1	Motor, 230V, 50/60Hz
NOTE: Contact Factory for other materials and/or parts not listed. Special voltage motors are available upon special order.			
Materials in contact with the liquid: : Polypropylene, Noryl, Ceramic, Buna N, Carbon, and Ceramic Magnet			
WARRANTY: https://www.marchpump.com/about/warranty/			
For the General Installation Manual, see this link https://www.marchpump.com/wp-content/uploads/2019/07/march-pump-general-installation-guide-0750-040.pdf Or Scan QR Code			
			0150-0262-1000 Revised 8.22.2025