



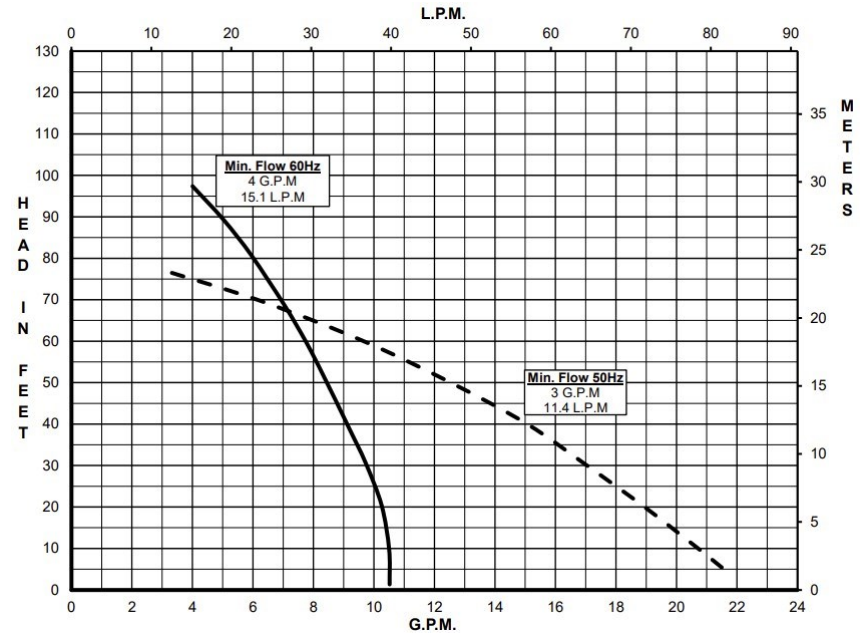
MARCH PUMPS

1819 PICKWICK AVE., GLENVIEW, IL 60026-1306, U.S.A
 PHONE: (847) 729-5300 - FAX: (847) 729-7062
 WWW.MARCHPUMP.COM

DESCRIPTION & OPERATION: TE-4MSR-MD 60Hz with Restrictor is a centrifugal magnetic drive multi-stage pump. See the parts list for a breakdown of parts. Pumps are not self-priming, lack a suction lift, and thus require a flooded suction. Pumps cannot be run dry because the impeller requires the liquid being pumped for lubrication. The direction of the motor rotation should be clockwise when facing the inlet of the pump. For liquids with a specific gravity greater than water, have a higher viscosity, or for elevated temperatures a trimmed impeller may be necessary. For application assistance, contact March Pump.

ELECTRICAL: Configurations: 1 Phase 115/230 Volt 60Hz, or 3 Phase 230/460 Volt 60Hz, 1.5HP or 1HP. Motors are totally enclosed fan cooled and are either CSA or U.L. listed as well as rated for continuous operation. All motors have a conduit box for electrical connections.

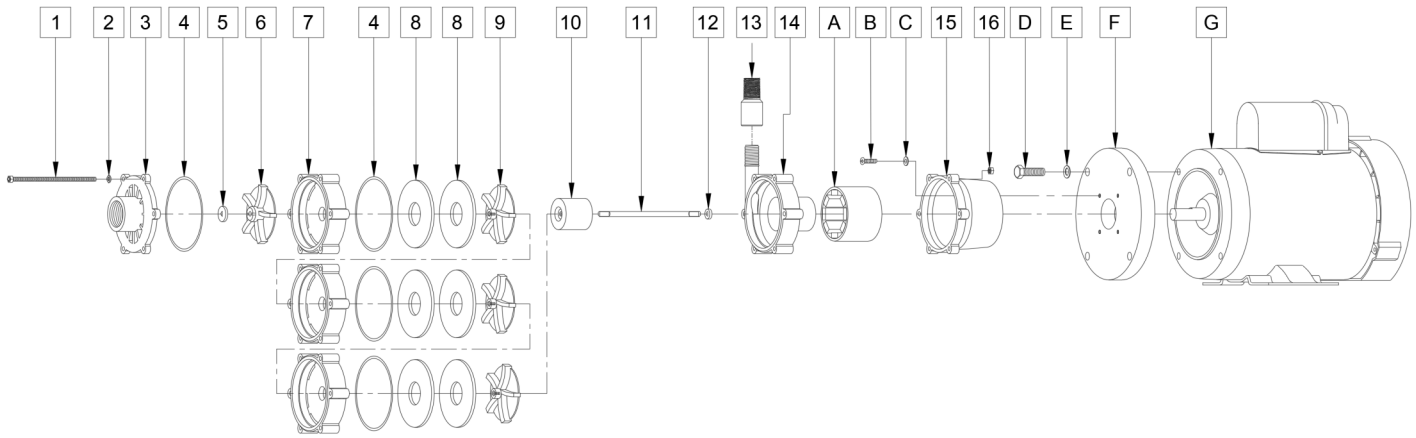
TE-4MSR-MD 60Hz with Restrictor



Specifications		TE-4MSR-MD 60Hz with Restrictor 1.5HP	TE-4MSR-MD 60Hz with Restrictor 1HP
Product	1Ph	1275-0054-0100	1275-0055-0100
	3Ph	1275-0053-0100	1275-0057-0100
Inlet-Outlet (Restrictor)		1" FPT BSP- 1/2" MPT	1" FPT BSP- 1/2" MPT
Max Internal Pressure		87PSI (600 kPa)	87PSI (600 kPa)
Max Liquid Temperature		190F/87C	190F/87C

	60Hz (1.5HP)											60Hz (1HP)										
	Max Flow		Max Head			Electrical						Max Flow		Max Head			Electrical					
Model	GPM	LPM	FT	PSI	M	Ph	Voltage	AMPS	HP	kW	RPM	GPM	LPM	Feet	PSI	M	Ph	Voltage	AMPS	HP	kW	RPM
TE-4MSR-MD	10.5	39	96	41.5	29.2	1	115/230	13.2/6.6	1.5	1.11	3450	10.5	39	96	41.5	29.2	1	115/230	12.6/6.2	1	0.75	3450
TE-4MSR-MD	10.5	39	96	41.5	29.2	3	230/460	3.87/1.7	1.5	1.11	3450	10.5	39	96	41.5	29.2	3	230/460	3.1/1.5	1	0.75	3450

All specifications & data are based on pumping water & are intended as a guideline only. Specifications may vary with different motors.



NOTE: When attaching the Drive Magnet to the motor shaft, position the face of the Drive Magnet 3/16 inch below the face of the Motor Bracket.

TE-4MSR-MD

NOTE: Contact Factory for other materials and/or parts not listed.

Special voltage motors are available upon special order.

Materials in Contact with Solution: Ryton, Ceramic, 316SS Viton

Item	Part Number	QTY REQ	Description
1	1275-0033-1000	6	M5 Rod with Nut
2	1275-0034-1000	6	M5 Washer
3	1275-0042-1000	1	Cover with 1" FPT BSP Threaded Inlet (Ryton)
4	1275-0011-1000	4	87 mm ID x 3 mm CS "O" Ring (Viton)
5	1275-0012-1000	1	3/4" Diameter Front Thrust Washer (Ceramic)
6	1275-0035-1000	1	Front Impeller (Brown Ryton)
7	1275-0036-1000	3	Stage Housing (Ryton)
8	1275-0037-1000	6	Disk (Ryton)
9	1275-0038-1000	3	Rear Impeller (Ryton)
10	1275-0039-1000	1	Encapsulated Impeller Magnet (Ryton)
11	1275-0047-0100	1	Shaft (316SS)
12	1275-0019-1000	1	1/2" Diameter Rear Thrust Washer (Ceramic)
13	1275-0048-0000	1	1/2" MNPT Restrictor (Ryton)
14	1275-0040-1000	1	Rear Housing with 1/2" MPT BSP Threaded Outlet (Ryton)
15	1275-0021-1000	1	Motor Bracket (Polypropylene)
16	1275-0022-1000	6	M5 Hex Nut
A	1275-0004-0000	1	Drive Magnet
B	0150-0050-1000	4	#10-32 x 3/4" Long Screw (Stainless)
C	0150-0051-1000	4	#10 Washer (Stainless)
D	0161-0042-1000	4	3/8"-16 x 1-1/4" Long Screw (Stainless)
E	0155-0019-1000	4	3/8" ID x 5/8" OD Washer (Stainless)
F	1275-0001-1000	1	Spacer (Plastic)
G	0155-0199-1000	1	Motor, TEFC, 1 Phase, 1.5HP, 115-208/230V, 60Hz
G	0155-0103-1000	1	Motor, TEFC, 3 Phase, 1.5HP, 208-230/460V 60Hz
G	0155-0173-1000	1	Motor, TEFC, 1 Phase, 1HP, 115-208/230V, 60Hz
G	0155-0174-1000	1	Motor, TEFC, 1 Phase, 1HP, 115-208/230V, 60Hz
WEK	1275-0052-0200	1	Wet End Kit for 60Hz (Items 1-16, less 15)

1275-0008-1100

LIMITED WARRANTY: March pumps are guaranteed only against defects in workmanship or materials for a period of one year from date of manufacture pumping water. For the complete warranty and to register online go to www.marchpump.com/warranty-registration