



MARCH PUMPS

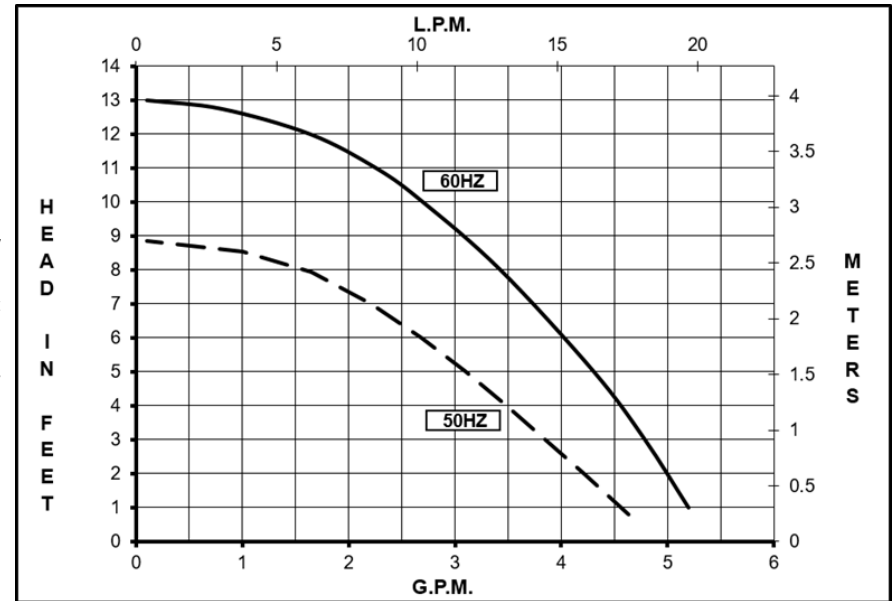
1819 PICKWICK AVE., GLENVIEW, IL 60026-1306, U.S.A
 PHONE: (847) 729-5300 - FAX: (847) 729-7062
 WWW.MARCHPUMP.COM

DESCRIPTION: Series 2 are centrifugal magnetic drive pumps, eliminating the need for a shaft seal. Pumps can be serviced with a screwdriver. See the parts list for a breakdown of parts. BC models have an encapsulated impeller magnet.

OPERATION: Pumps are not self-priming, lack a suction lift, and thus require a **flooded suction**. Pumps **cannot be run dry** because the impeller requires the liquid being pumped for lubrication. For liquids with a specific gravity greater than water, have a higher viscosity, or for elevated temperatures, a trimmed impeller may be necessary. For application assistance, contact March Pump.

ELECTRICAL: The BC-2K-MD blast cooled motors are available in two different electrical configurations 115V 50/60Hz, or 230V 50/60Hz, 1 phase. The motor has a 3ft (0.9m) cord. Both motors are U.L. listed and rated for continuous duty.

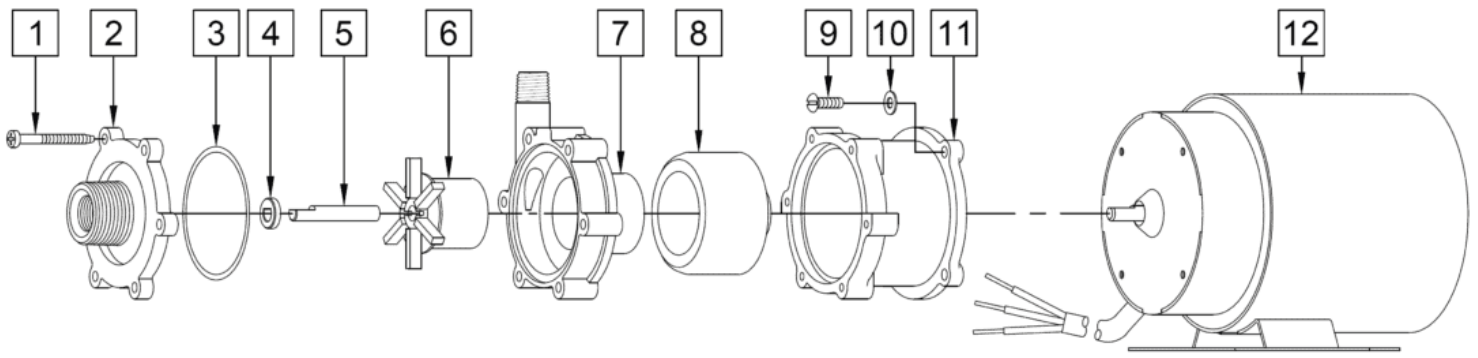
BC-2K-MD



Specifications		BC-2K-MD
Product	115V	0125-0138-0100
	230V	0125-0138-0200
Inlet-Outlet		3/8" FPT & 3/4" MPT-1/4" MPT
Max Internal Pressure		75PSI (517 kPa)
Max Liquid Temperature		200F/93C

Model	60Hz											50Hz										
	Max Flow		Max Head			Electrical						Max Flow		Max Head			Electrical					
	GPM	LPM	FT	PSI	M	Ph	V	A	HP	kW	RPM	GPM	LPM	Feet	PSI	M	Ph	V	A	HP	kW	RPM
BC-2K-MD	5	18.9	13	5.7	4	1	115/230	1.2/0.5	1/40	0.019	3450	4.89	18.5	8.8	3.8	2.7	1	115/230	1.2/0.5	1/40	0.019	2850

All specifications & data are based on pumping water & are intended as a guideline only. Specifications may vary with different motors.



NOTE: When attaching the Drive Magnet to the motor shaft, position the face of the Drive Magnet 1/16 inch below the face of the Motor Bracket.

BC-2K-MD

Item	Part Number	QTY REQ	Description
1	0115-0062-1000	6	#7-19 x 1-7/16" Long Self-Tapping Screw (Stainless)
2	0125-0136-1000	1	Cover with 3/8" FPT x 3/4" MPT Inlet (Glass Filled Kynar)
3	0125-0065-1000	1	3/32" CS x 2-3/16" OD "O" Ring (Viton)
4	0130-0028-1000	1	Thrust Washer (Ceramic)
5	0125-0061-1000	1	Shaft (Ceramic)
6	0125-0101-0200	1	Encapsulated Impeller (Glass Filled Kynar)
7	0125-0137-1000	1	Rear Housing with 1/4" MPT Outlet (Glass Filled Kynar)
8	0125-0083-0100	1	0.250" Bore Drive Magnet
9	0150-0015-1000	4	#8-32 x 1/2" Long Screw (Stainless)
10	0858-0004-1000	4	#8 Washer (Stainless)
11	0125-0069-1000	1	Motor Bracket (Plastic)
12A	0125-0088-1000	1	Motor 115V, 50/60Hz, Blast Cooled
12B	0125-0089-1000	1	Motor 230V, 50/60Hz, Blast Cooled
W	TBD	1	Wet End Kit (1,2,4,5,6,8,9)

NOTE: Contact Factory for other materials and/or parts not listed.

Special voltage motors are available upon special order.

Materials in contact with the liquid: Glass Filled Kynar, Ceramic, Viton

LIMITED WARRANTY: March pumps are guaranteed only against defects in workmanship or materials for a period of one year from date of manufacture pumping water. For the complete warranty and to register online go to www.marchpump.com/warranty-registration

For the General Installation Manual, see this link <https://www.marchpump.com/wp-content/uploads/2019/07/march-pump-general-installation-guide-0750-040.pdf>

Or Scan QR Code



0125-0076-1200-REV 3