



MARCH PUMPS

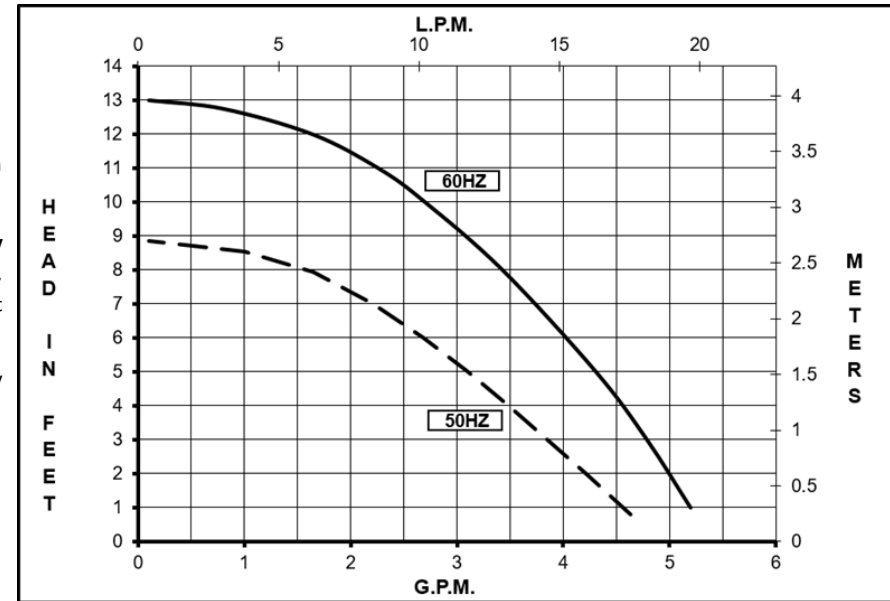
1819 PICKWICK AVE., GLENVIEW, IL 60026-1306, U.S.A
PHONE: (847) 729-5300 - FAX: (847) 729-7062
WWW.MARCHPUMP.COM

DESCRIPTION: Series 2 are centrifugal magnetic drive pumps, eliminating the need for a shaft seal. Pumps can be serviced with a screwdriver. See the parts list for a breakdown of parts. BC models have an encapsulated impeller magnet.

OPERATION: Pumps are not self-priming, lack a suction lift, and thus require a **flooded suction**. Pumps **cannot be run dry** because the impeller requires the liquid being pumped for lubrication. For liquids with a specific gravity greater than water, have a higher viscosity, or for elevated temperatures, a trimmed impeller may be necessary. For application assistance, contact March Pump.

ELECTRICAL: The BC-2K-MD blast cooled motors are available in two different electrical configurations 115V 50/60Hz, or 230V 50/60Hz, 1 phase. The motor has a 3ft (0.9m) cord. Both motors are U.L. listed and rated for continuous duty.

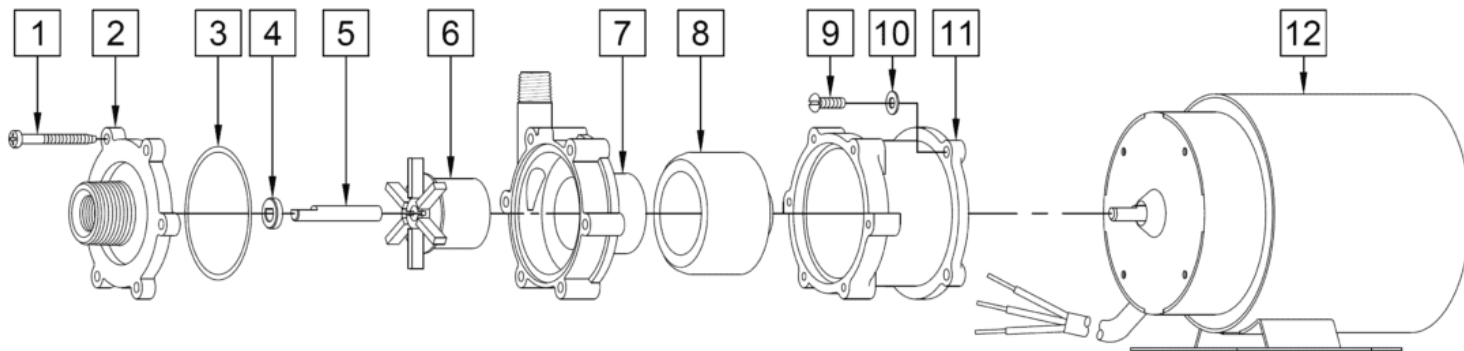
BC-2K-MD



| | | |
|------------------------|------|------------------------------|
| Specifications | | BC-2K-MD |
| Product | 115V | 0125-0138-0100 |
| | 230V | 0125-0138-0200 |
| Inlet-Outlet | | 3/8" FPT & 3/4" MPT-1/4" MPT |
| Max Internal Pressure | | 75PSI (517 kPa) |
| Max Liquid Temperature | | 200F/93C |

| | 60Hz | | | | | | | | | | 50Hz | | | | | | | | | |
|----------|----------|------|----------|-----|---|------------|---------|---------|------|-------|----------|------|----------|-----|-----|------------|---------|---------|------|-------|
| | Max Flow | | Max Head | | | Electrical | | | | | Max Flow | | Max Head | | | Electrical | | | | |
| Model | GPM | LPM | FT | PSI | M | Ph | V | A | HP | kW | GPM | LPM | Feet | PSI | M | Ph | V | A | HP | kW |
| BC-2K-MD | 5 | 18.9 | 13 | 5.7 | 4 | 1 | 115/230 | 1.2/0.5 | 1/40 | 0.019 | 4.89 | 18.5 | 8.8 | 3.8 | 2.7 | 1 | 115/230 | 1.2/0.5 | 1/40 | 0.019 |

All specifications & data are based on pumping water & are intended as a guideline only. Specifications may vary with different motors.



NOTE: When attaching the Drive Magnet to the motor shaft, position the face of the Drive Magnet 1/16 inch below the face of the Motor Bracket.

BC-2K-MD

| Item | Part Number | QTY REQ | Description |
|------|----------------|------------|---|
| 1 | 0115-0062-1000 | 6 | #7-19 x 1-7/16" Long Self-Tapping Screw (Stainless) |
| 2 | 0125-0136-1000 | 1 | Cover with 3/8" FPT x 3/4" MPT Inlet (Glass Filled Kynar) |
| 3 | 0125-0065-1000 | 1 | 3/32" CS x 2-3/16" OD "O" Ring (Viton) |
| 4 | 0130-0028-1000 | 1 | Thrust Washer (Ceramic) |
| 5 | 0125-0061-1000 | 1 | Shaft (Ceramic) |
| 6 | 0125-0101-0200 | 1 | Encapsulated Impeller (Glass Filled Kynar) |
| 7 | 0125-0137-1000 | 1 | Rear Housing with 1/4" MPT Outlet (Glass Filled Kynar) |
| 8 | 0125-0083-0100 | 1 | 0.250" Bore Drive Magnet |
| 9 | 0150-0015-1000 | 4 | #8-32 x 1/2" Long Screw (Stainless) |
| 10 | 0858-0004-1000 | 4 | #8 Washer (Stainless) |
| 11 | 0125-0069-1000 | 1 | Motor Bracket (Plastic) |
| 12A | 0125-0088-1000 | 1 | Motor 115V, 50/60Hz, Blast Cooled |
| 12B | 0125-0089-1000 | 1 | Motor 230V, 50/60Hz, Blast Cooled |
| W | TBD | 1 | Wet End Kit (1,2,4,5,6,8,9) |

NOTE: Contact Factory for other materials and/or parts not listed.

Special voltage motors are available upon special order.

Materials in contact with the liquid: Glass Filled Kynar, Ceramic, Viton

WARRANTY: <https://www.marchpump.com/about/warranty/>

For the General Installation Manual, see this link <https://www.marchpump.com/wp-content/uploads/2019/07/march-pump-general-installation-guide-0750-040.pdf>

Or Scan QR Code



0125-0076-1200-REV 8/27/2025