



# MARCH PUMPS

1819 PICKWICK AVE., GLENVIEW, IL 60026-1306, U.S.A  
 PHONE: (847) 729-5300 - FAX: (847) 729-7062  
 WWW.MARCHPUMP.COM

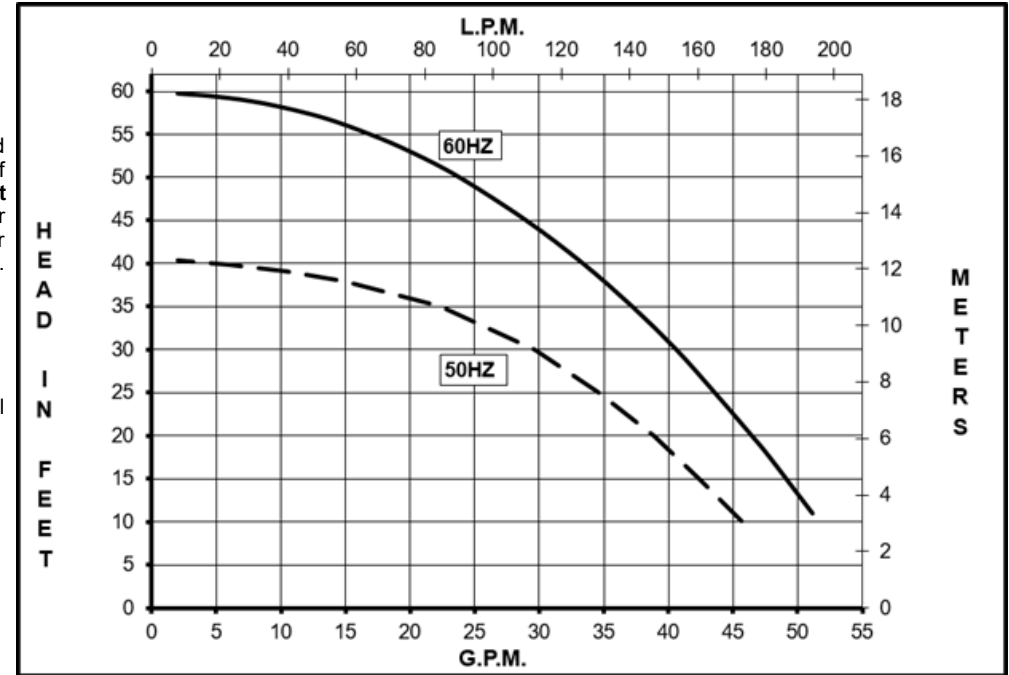
## TE-7KC-MD

**DESCRIPTION & OPERATION:** Series 7 are centrifugal magnetic drive pumps, eliminating the need for a shaft seal. Pumps can be serviced with an adjustable wrench. See the parts list for a breakdown of parts. Pumps are not self-priming, lack a suction lift, and thus require a **flooded suction**. Pumps **cannot be run dry** because the impeller requires the liquid being pumped for lubrication. The direction of motor rotation should be clockwise when facing the inlet of the pump. For liquids with a specific gravity greater than water, have a higher viscosity, or for elevated temperatures, a trimmed impeller may be necessary. For application assistance, contact March Pump.

### ELECTRICAL:

1 phase 115/230 Volt, 50/60 Hz or 3 phase 230/460 Volt, 60 Hz, 190/380 Volt, 50 Hz.

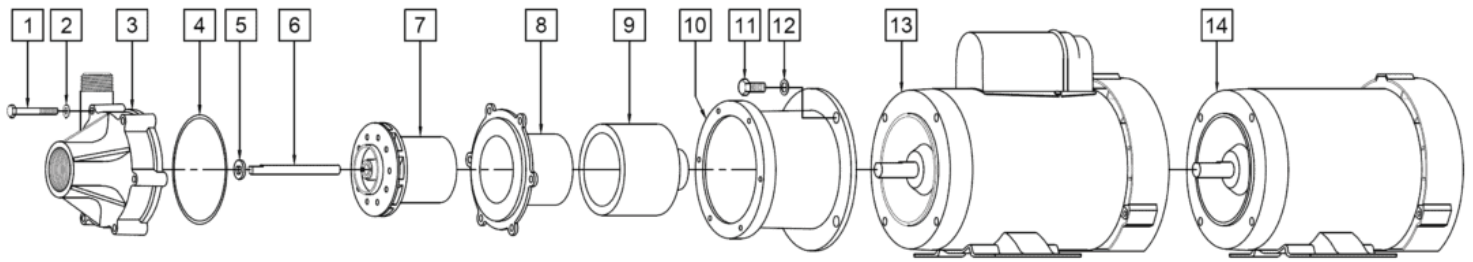
Motors are totally enclosed fan cooled and are U.L. listed as well as rated for continuous operation. All motors have a conduit box for electrical connections.



|                        |     |                   |
|------------------------|-----|-------------------|
| Specifications         |     | TE-7KC-MD         |
| Product                | 1Ph | 0155-0336-0100    |
|                        | 3Ph | 0155-0336-0200    |
| Inlet-Outlet           |     | 1-1/2" FPT-1" MPT |
| Max Internal Pressure  |     | 75PSI (517 kPa)   |
| Max Liquid Temperature |     | 200F (93C)        |

| Model     | 60Hz     |     |          |     |      |            |         |          |    |      |      | 50Hz     |     |          |      |      |            |         |          |    |      |      | Packed Weight |
|-----------|----------|-----|----------|-----|------|------------|---------|----------|----|------|------|----------|-----|----------|------|------|------------|---------|----------|----|------|------|---------------|
|           | Max Flow |     | Max Head |     |      | Electrical |         |          |    |      |      | Max Flow |     | Max Head |      |      | Electrical |         |          |    |      |      |               |
|           | GPM      | LPM | FT       | PSI | M    | Ph         | V       | A        | HP | kW   | RPM  | GPM      | LPM | Feet     | PSI  | M    | Ph         | V       | A        | HP | kW   | RPM  | Pounds        |
| TE-7KC-MD | 53       | 201 | 60       | 26  | 18.3 | 1          | 115/230 | 12.6/6.2 | 1  | 0.75 | 3450 | 47       | 180 | 40.3     | 17.5 | 12.3 | 1          | 115/230 | 14.3/7.1 | 1  | 0.75 | 2850 | Call          |
| TE-7KC-MD | 53       | 201 | 60       | 26  | 18.3 | 3          | 230/460 | 3.3/1.5  | 1  | 0.75 | 3450 | 47       | 180 | 40.3     | 17.5 | 12.3 | 3          | 190/380 | 3.3/1.7  | 1  | 0.75 | 2850 | Call          |

All specifications & data are based on pumping water & are intended as a guideline only. Specifications may vary with different motors.



**NOTE:** When replacing Impeller Bushing in the field: The plastic bushings must be bored to size after they have been pressed into the impeller. Bore to 0.378/0.381 I.D. The carbon and ceramic bushings are to finished size and do not require boring. When attaching drive magnet to the motor shaft, position the face of the drive magnet 1/8 inch below the face of the motor bracket.

**TE-7KC-MD**

| Item | Part Number    | QTY<br>REQ | Description   |
|------|----------------|------------|---|
| 1    | 0155-0014-1000 | 6          | 1/4"-20 x 2" Lg. Screw (Stainless)                            |
| 2    | 0155-0021-1000 | 6          | 1/4"ID x 1/2"OD Washer (Stainless)                            |
| 3    | 1235-0009-1000 | 1          | Front Housing (Carbon Filled Kynar)                           |
| 4    | 0155-0010-1000 | 1          | 1/8" CS x 4-3/8" OD "O" Ring (Viton)                          |
| 5    | 0155-0009-1000 | 1          | Thrust Washer (Ceramic)                                       |
| 6    | 0155-0039-1000 | 1          | 4.070"Lg. Shaft (Ceramic)                                     |
| 7    | 1235-0007-0100 | 1          | Impeller with Carbon Bushing (Carbon Filled Kynar)            |
| 8    | 1235-0008-0100 | 1          | Rear Housing with Ceramic Thrust Washer (Carbon Filled Kynar) |
| 9    | 0155-0130-0200 | 1          | Drive Magnet  |
| 10   | 0155-0092-0100 | 1          | Motor Bracket (Plastic)                                       |
| 11   | 0155-0017-1000 | 4          | 3/8"-16 x 3/4" Lg. Screw (Stainless)                          |
| 12   | 0155-0019-1000 | 4          | 3/8"ID x 5/8"OD Washer (Stainless)                            |
| 13   | 0155-0173-1000 | 1          | 1 Phase TEFC Motor 115/230V, 50/60Hz, 1HP                     |
| 14   | 0155-0174-1000 | 1          | 3Phase TEFC Motor 230/460V, 50/60Hz, 1HP                      |
| W    |                | 1          | Wet End Kit (Items: 1, 2,3,4,5,6,7,8)                         |

NOTE: Contact Factory for other materials and/or parts not listed.  
Special voltage motors are available upon special order.

Materials in contact with the liquid: **TE-7KC-MD:** Carbon Filled Kynar, Carbon, Ceramic, Viton

**LIMITED WARRANTY:** March pumps are guaranteed only against defects in workmanship or materials for a period of one year from date of manufacture pumping water. For the complete warranty and to register online go to [www.marchpump.com/warranty-registration](http://www.marchpump.com/warranty-registration)