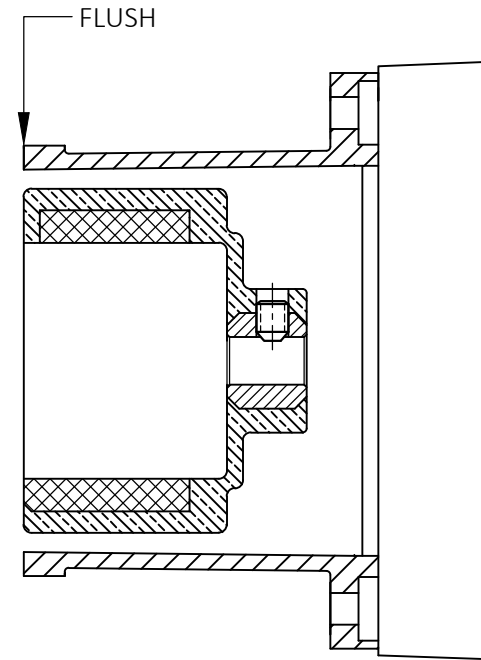


PUMPS WITH
FACE OF DRIVE MAGNET BELOW
THE FACE OF THE MOTOR BRACKET.

BELOW DIMENSION

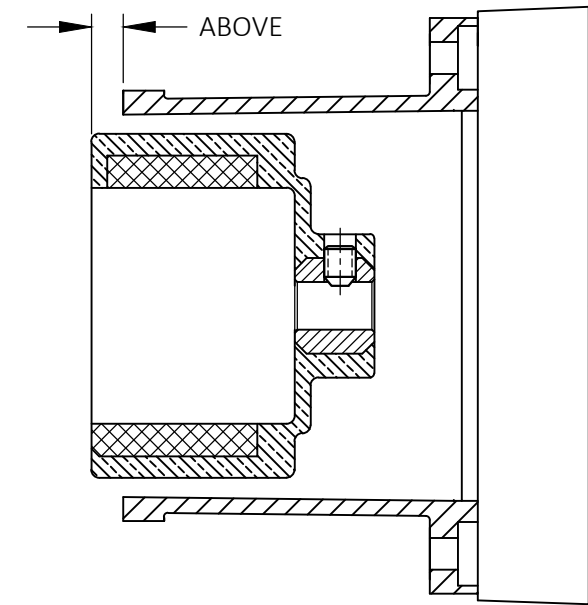
AC, BC-2-MD	1/16 (.0625 inches) (1.59 mm)	320	1/8 (.125 inches) (3.18 mm)
AC, BC-3-MD	3/32 (.09375 inches) (2.38 mm)	809	1/16 (.0625 inches) (1.59 mm)
MDX	1/16 (.0625 inches) (1.59 mm)	809-HS	1/16 (.0625 inches) (1.59 mm)
MDX-3	1/16 (.0625 inches) (1.59 mm)	815	1/16 (.0625 inches) (1.59 mm)
MDXT	1/16 (.0625 inches) (1.59 mm)	140	.160 inches (4.06 mm)
MDXT-3	1/16 (.0625 inches) (1.59 mm)	1-MD	.117 inches (2.97 mm)
MDX-MT3	1/16 (.0625 inches) (1.59 mm)	893	1/16 (.0625) (1.59 mm)
TE-MDX-MT3	1/16 (.0625 inches) (1.59 mm)		
AC,BC-4-MD	1/16 (.0625 inches) (1.59 mm)		
AC, TE-5-MD	3/32 (.0938 inches) (2.38 mm)		
TE-6-MD	3/32 (.0938 inches) (2.38 mm)		
TE-7-MD	1/8 (.125 inches) (3.18 mm)		
TE-8-MD	3/8 (.375 inches) (9.52 mm)		



PUMPS WITH
FACE OF DRIVE MAGNET FLUSH
WITH THE FACE OF THE MOTOR BRACKET.

335

- TE-5.5-MD
- TE-5.5-MD-AC



PUMPS WITH
FACE OF DRIVE MAGNET ABOVE
THE FACE OF THE MOTOR BRACKET.

ABOVE DIMENSION

SP-TE-7-MD	49/64 (.7656 inches) (19.4 mm)
TE-7.5-MD	5/32 (.1562 inches) (3.97 mm)
TE-10-MD	3/16 (.1875 inches) (4.76 mm)
821	59/64 (.9218 inches) (23.4 mm)
830	.977 inches (24.8 mm)

DRAWING SIZE: C-17x22
UNLESS NOTED OTHERWISE
ALL DIMS ARE IN INCHES.

MARCH MFG. INC.
1819 PICKWICK AVE. GLENVIEW, ILLINOIS

DIMS.	TOLERANCE
0.00	±0.03
0.000	±0.005
FRACTIONS	±1/64
ANGLES	±1°

THIS DOCUMENT DISCLOSES SUBJECT MATTER IN WHICH MARCH MFG. INC. HAS PROPRIETARY RIGHTS, NEITHER RECEIPT NOR POSSESSION THEREOF CONFERS OR TRANSFERS ANY RIGHT TO REPRODUCE OR DISCLOSE THE DOCUMENT, ANY PART THEREOF, ANY INFORMATION CONTAINED THEREIN, OR ANY PHYSICAL ARTICLE OR DEVICE OR TO PRACTICE ANY METHOD OR PROCESS, EXCEPT BY WRITTEN PERMISSION FROM OR WRITTEN AGREEMENT WITH MARCH MFG. INC.

DRAWN HZ	5/7/20	MOLD # ----
CHECKED Dr TZ	5/7/20	FIXTURE # ----
CUSTOMER ----		

REV.	INITIALS	DATE	CHANGE

MATERIAL ----
PART # 0750-1015-1000
REV. ----

PART NAME Instructions Sheet (Drive Magnet/Motor Bracket Positions)