



MARCH PUMPS

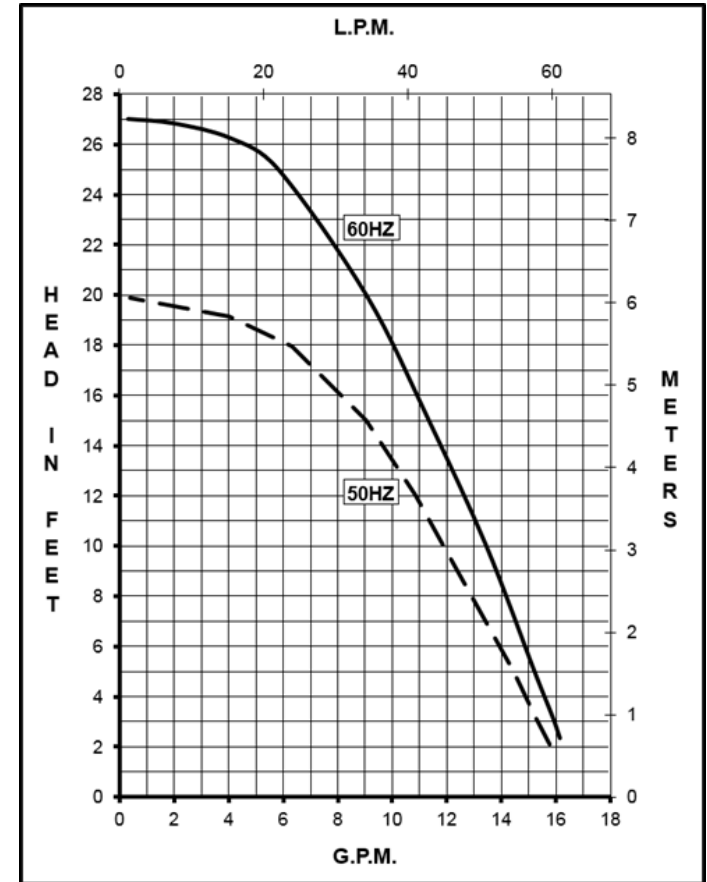
1819 PICKWICK AVE., GLENVIEW, IL 60026-1306, U.S.A
 PHONE: (847) 729-5300 - FAX: (847) 729-7062
 WWW.MARCHPUMP.COM

DESCRIPTION: [Series 5 are centrifugal magnetic drive pumps](#), eliminating the need for a shaft seal. All are serviceable with a screwdriver.

OPERATION: Pumps are not self-priming, lack a suction lift, and thus require a **flooded suction**. Pumps **cannot be run dry** because the impeller requires the liquid being pumped for lubrication. For liquids with a specific gravity greater than water, have a higher viscosity, or for elevated temperatures, a trimmed impeller may be necessary. For application assistance, contact March Pump.

ELECTRICAL: Models are 115V or 230 Volt and have a 6 foot or 1.8 meter Cord. Models have U.L. listed motors, which are rated for continuous duty.

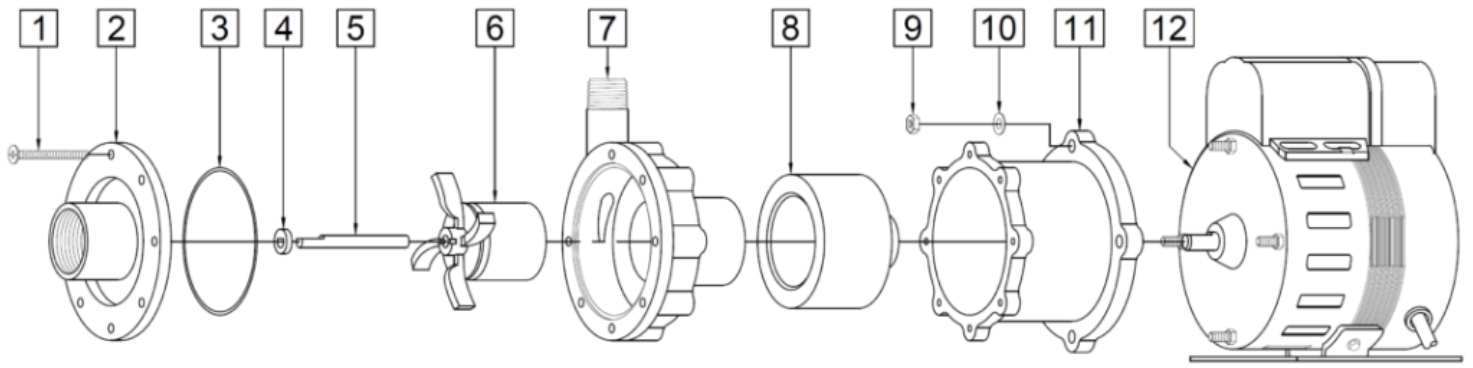
AC-5SSB-MD With Broad Ocean Motor



Specifications		AC-5SSB-MD
Product	115V	0150-0314-0100
	230V	0150-315-0100
Inlet-Outlet		1" FPT - 1/2" MPT
Max Internal Pressure		200PSI (1378 kPa)
Max Liquid Temperature		250F (121C)

Model	60Hz										50Hz									
	Max Flow		Max Head			Electrical					Max Flow		Max Head			Electrical				
	GPM	LPM	FT	PSI	M	Ph	V	A	HP	kW	GPM	LPM	Feet	PSI	M	Ph	V	A	HP	kW
All	17	64.4	27	11.7	8.2	1	115 or 230	1.85 or 0.91	1/6	0.12	15.9	60	19.7	8.5	6	1	115 or 230	1.76 or 0.83	1/8	0.093

All specifications & data are based on pumping water & are intended as a guideline only. Specifications may vary with different motors.



AC-5SSB-MD

Item	Part Number	QTY REQ	Description
1	0150-0021-1000	7	#8-32 x 1-3/4 Lg. (Stainless)
2	0150-0111-0010	1	Cover with 1" FPT Inlet (316 SS)
3	0750-0981-1000	1	0.078 CS x 2.834 ID O Ring (Buna N)
4	0130-0028-1000	1	Thrust Washer (Ceramic)
5	0939-0003-1000	1	Shaft (316 SS)
6	0150-0173-0300	1	Impeller with Shell and Carbon Bushing (Polysulfone/316 SS)
7	0150-0110-0010	1	Rear Housing with 1/2" MPT Outlet (316 SS)
8	0150-0081-0100	1	Drive Magnet
9	0625-0024-1000	4	#10-32 Hex Nut (Stainless)
10	0802-0006-1000	4	#10 Washer (Stainless)
11	0150-0126-0100	1	Motor Bracket (Plastic)
12	0150-0288-1000	1	Motor, 115V, 50/60Hz
12	0150-0289-1000	1	Motor, 230V, 50/60Hz

NOTE: Contact Factory for other materials and/or parts not listed.

Special voltage motors are available upon special order.

Materials in contact with the liquid: : 316 Stainless Steel, Polysulfone, Ceramic, Buna N, Carbon

WARRANTY: <https://www.marchpump.com/about/warranty/>

For the General Installation Manual, see this link <https://www.marchpump.com/wp-content/uploads/2019/07/march-pump-general-installation-guide-0750-040.pdf>
Or Scan QR Code



0150-0318-1200