



MARCH PUMPS

1819 PICKWICK AVE., GLENVIEW, IL 60026-1306, U.S.A
 PHONE: (847) 729-5300 - FAX: (847) 729-7062
 WWW.MARCHPUMP.COM

BEER PUMPS 815 Series

DESCRIPTION:

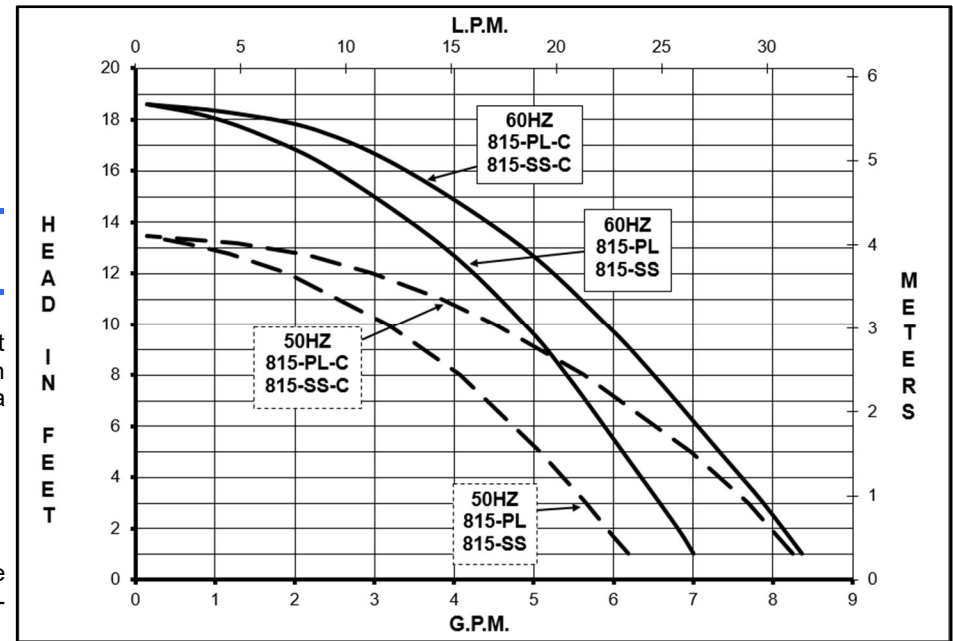
The March beer pump is a non-self-priming magnetic drive unit built specifically to handle hot wort and water. The unit requires liquid being pumped to lubricate the internal parts. If the pump is run dry for a period of time the impeller and shaft may become damaged. To regulate the flow use a valve on the discharge/outlet.

ELECTRICAL:

All models have an air cooled 1 phase motor and have a 6 foot cord with plug.

LIMITED WARRANTY:

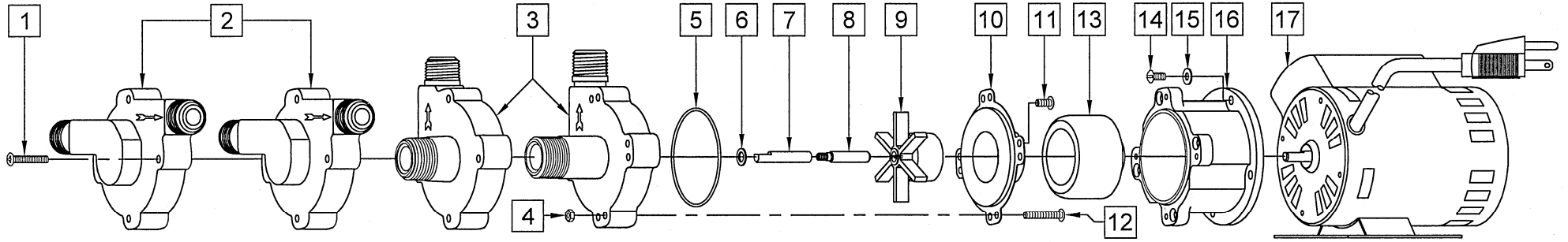
March pumps are guaranteed only against defects in workmanship or materials for a period of one year from date of manufacture pumping water. Register online at www.marchpump.com/warranty-registration



SPECIFICATIONS	815-PL-C			815-SS-C			815-PL			815-SS		
	Product #	115 V	0809-0188-0100	Polysulfone, Center Inlet	0809-0198-0100	Stainless, Center Inlet	0809-0196-0600	Polysulfone, Inline	0809-0196-0700	Stainless, Inline		
UNITS	60 Hz	50 Hz	60 Hz	50 Hz	60 Hz	50 Hz	60 Hz	50 Hz	60 Hz	50 Hz		
Max Flow	8 gpm	30 lpm	8 gpm	30 lpm	7 gpm	22.7 lpm	7 gpm	22.7 lpm	7 gpm	22.7 lpm		
Max Head	18.6 ft. / 8.05 psi	4.1 m	18.6 ft. / 8.05 psi	4.1 m	18.6 ft. / 8.05 psi	4.1 m	18.6 ft. / 8.05 psi	4.1 m	18.6 ft. / 8.05 psi	4.1 m		
Inlet	3/8" FPT & 3/4" MPT		3/4" MPT		1/2" MPT		1/2" MPT		1/2" MPT			
Outlet	1/2" MPT		1/2" MPT		1/2" MPT		1/2" MPT		1/2" MPT			
Max Internal Pressure	50 psi / 3.4 bar		150 psi / 10 bar		50 psi / 3.4 bar		150 psi / 10 bar		50 psi / 3.4 bar			
Max Liquid Temperature	250 °F / 121 °C		250 °F / 121 °C		250 °F / 121 °C		250 °F / 121 °C		250 °F / 121 °C			
Packed Weight	5 lbs / 2.3 kg		6 lbs / 2.7 kg		5 lbs / 2.3 kg		6 lbs / 2.7 kg		5 lbs / 2.3 kg			
ELECTRICAL 60 Hz	A	Hp	Rpm	A	Hp	Rpm	A	Hp	Rpm	A	Hp	Rpm
115 V	.5	1/25	3450	.5	1/25	3450	.5	1/25	3450	.5	1/25	3450
ELECTRICAL 50 Hz	A	kW	Rpm	A	kW	Rpm	A	kW	Rpm	A	kW	Rpm
115 V	.4	0.022	2850	.4	0.022	2850	.4	0.022	2850	.4	0.022	2850
Overall Pump Size	Height	Width	Length	Height	Width	Length	Height	Width	Length	Height	Width	Length
Inches	4.38	4.18	8.25	4.50	4.18	8.69	4.37	4.88	7.55	4.37	4.88	7.57
cm	11.1	10.6	20.9	11.4	10.6	22.0	11.0	12.3	19.1	11.0	12.3	19.1

All specifications & data are based on pumping water & are intended as a guideline only. Specifications may vary with different motors.

PARTS LIST



#	DESCRIPTION	MATERIAL		SIZE (Inches)	QTY.	PART #	
		815-SS-C	815-SS			815-SS-C	815-SS
1	Screw	Stainless	Stainless	#8-32 x 1 Lg.	4	0809-0205-1000	0809-0205-1000
2	Pump Housing (Inline)		Stainless	Inline Inlet & Outlet	1		0809-0211-0010
3	Pump Housing (Center Inlet)	Stainless		Center Inlet	1	0809-0150-0010	
4	Hex Nut		Stainless	#8-32	4	0991-0004-1000	
5	"O" Ring		Silicone	0.070 CS x 2.441 ID	1	0809-0165-1000	0809-0165-1000
6	Thrust Washer		Teflon		1		0809-0043-1000
8	*Shaft		Stainless	Left-Hand Thread	1	0809-0214-1000	0809-0214-1000
9	Impeller		Ryton/Teflon/Glass	2-5/32 Dia.	1		0809-0107-0200
10	Rear Housing		Stainless		1		0809-0012-1000
11	Screw		Stainless	#8-32 x 3/8 Lg.	4		0135-0040-1000
12	Screw		Stainless	#8-32 x 1 Lg.	4	0809-0205-1000	
13	Drive Magnet				1		0125-0083-0100
14	Screw		Stainless	#8-32 x 3/8 Lg.	4		0135-0040-1000
15	Washer		Stainless		4		0858-0004-1000
16	Motor Bracket		Plastic		1		0809-0058-1000
17	Motor 115 V, 50/60 Hz w/base			6 foot cord w/plug	1		0809-0218-1000

#	DESCRIPTION	MATERIAL		SIZE (Inches)	QTY.	PART #	
		815-PL-C	815-PL			815-PL-C	815-PL
1	Screw	Steel	Steel	#8-32 x 1 Lg.	4	0923-0003-1000	0923-0003-1000
2	Pump Housing (Inline)		Polysulfone	Inline Inlet & Outlet	1		0809-0079-0100
3	Pump Housing (Center Inlet)	Polysulfone		Center Inlet	1	0809-0179-0100	
5	"O" Ring		Silicone	1/16 CS x 2-3/8 ID	1		0809-0027-1000
6	Thrust Washer		Teflon		1		0809-0043-1000
7	*Shaft		Stainless	"D" Flat	1		0809-0161-1000
9	Impeller		Ryton/Teflon/Glass	2-5/32 Dia.	1		0809-0107-0200
10	Rear Housing		Stainless		1		0809-0012-1000
11	Screw		Stainless	#8-32 x 3/8 Lg.	4		0135-0040-1000
13	Drive Magnet				1		0125-0083-0100
14	Screw		Stainless	#8-32 x 3/8 Lg.	4		0135-0040-1000
15	Washer		Stainless		4		0858-0004-1000
16	Motor Bracket		Plastic		1		0809-0058-1000
17	Motor 115 V, 50/60 Hz w/base			6 foot cord w/plug	1		0809-0218-1000

NOTE: Contact Factory for other materials and/or parts not listed.

0750-0976-1000 R10

*Check shaft type before ordering replacement parts.