



MARCH PUMPS

1819 PICKWICK AVE., GLENVIEW, IL 60026-1306, U.S.A
 PHONE: (847) 729-5300 - FAX: (847) 729-7062
 WWW.MARCHPUMP.COM

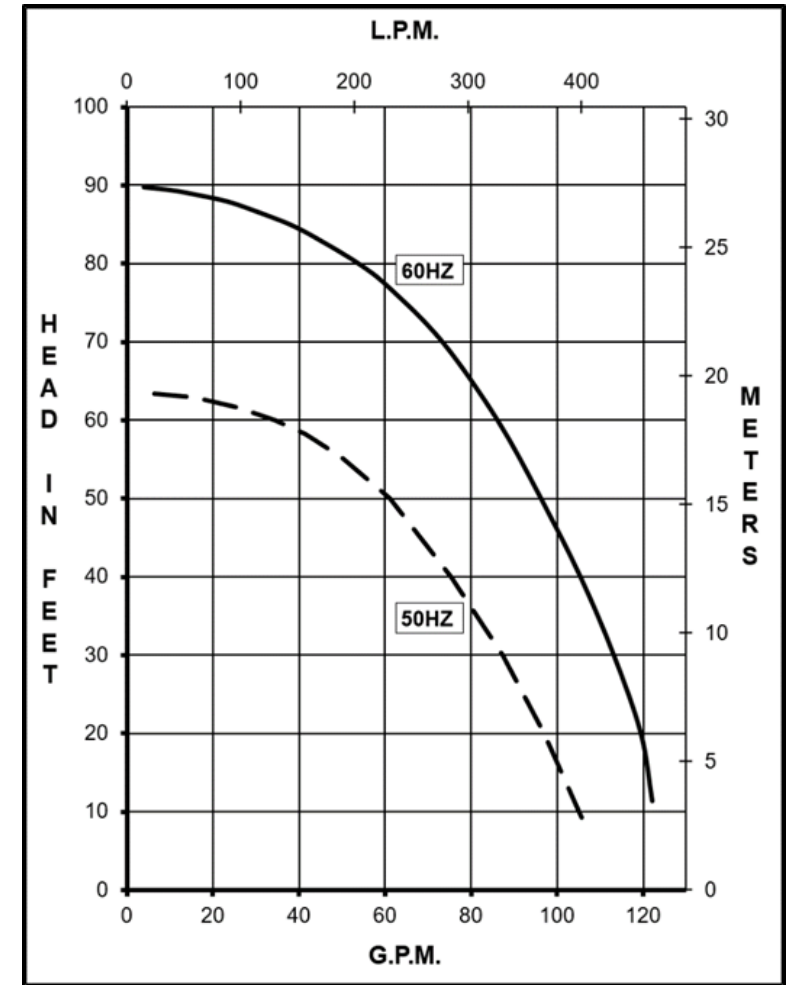
DESCRIPTION: The TE-8S-MD is a centrifugal magnetic drive pump, eliminating the need for a shaft seal. Pumps are serviceable with an adjustable wrench. Screws should be tightened in sequence & uniformly. See the parts list for a breakdown of parts.

OPERATION: Pump is not self-priming, lack a suction lift, and thus require a flooded suction. Pump cannot be run dry because the impeller requires the liquid being pumped for lubrication. The direction of motor rotation should be clockwise when facing the inlet of the pump. For liquids with a specific gravity greater than water, have a higher viscosity, or for elevated temperatures, a trimmed impeller may be necessary. For application assistance, contact March Pump.

ELECTRICAL: TE-8S-MD pump is dual voltage 230/460, 3 phase 60 Hz and dual voltage 190/380, 3 phase 50 Hz, TEFC. Motor is totally enclosed fan cooled and are U.L. listed as well as rated for continuous operation. Motor has a conduit box for electrical connections.

ASSEMBLY & DISASSEMBLY: When replacing impeller bushings in the field, the plastic bushings must be bored to size after they have been pressed into the impeller. Bore to 0.630/0.632 I.D. The carbon & ceramic bushings are to finished size and do not require boring. When attaching the drive magnet to the motor shaft, position the face of the drive magnet 3/8 inch below the face of the motor bracket

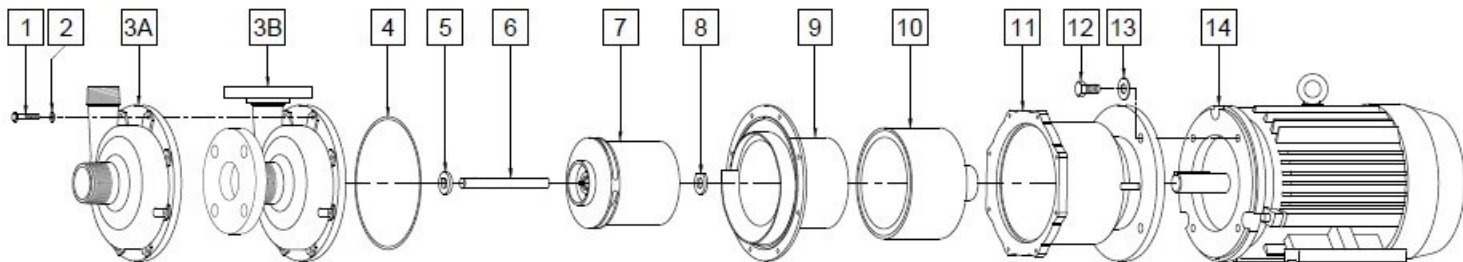
TE-8S-MD, TE-8S-MD With Flanges



| Specifications | | TE-8S-MD | TE-8S-MD with Flanges |
|------------------------|---------|-------------------|-----------------------|
| Product | 3Ph 5HP | 0157-0030-0100 | 0157-0030-0170 |
| Inlet-Outlet | | 2" MPT-1.5" MPT | 2" Flange-1.5" Flange |
| Max Internal Pressure | | 200PSI (1378 kPa) | 200PSI (1378 kPa) |
| Max Liquid Temperature | | 250F (121C) | 250F (121C) |

| | 60Hz | | | | | | | | | | | 50Hz | | | | | | | | | | | Packed Weight |
|----------------------|----------|-----|----------|-----|------|------------|---------|----------|----|-----|------|----------|-----|----------|------|------|------------|-----|-----|----|-----|------|---------------|
| | Max Flow | | Max Head | | | Electrical | | | | | | Max Flow | | Max Head | | | Electrical | | | | | | |
| Model | GPM | LPM | FT | PSI | M | Ph | V | A | HP | kW | RPM | GPM | LPM | Feet | PSI | M | Ph | V | A | HP | kW | RPM | Pounds |
| TE-8SMD | 120 | 454 | 90 | 39 | 27.4 | 3 | 230/460 | 12.6/6.3 | 5 | 3.7 | 3450 | 105 | 400 | 63.3 | 27.4 | 19.3 | 3 | 380 | 7.5 | 5 | 3.7 | 2850 | 180 |
| TE-8SMD With Flanges | 120 | 454 | 90 | 39 | 27.4 | 3 | 230/460 | 12.6/6.3 | 5 | 3.7 | 3450 | 105 | 400 | 63.3 | 27.4 | 19.3 | 3 | 380 | 7.5 | 5 | 3.7 | 2850 | 186 |

All specifications & data are based on pumping water & are intended as a guideline only. Specifications may vary with different motors.



| TE-8S-MD | | | | TE-8S-MD With Flanges | | | |
|----------|----------------|---------|---|-----------------------|----------------|---------|---|
| Item | Part Number | QTY REQ | Description | Item | Part Number | QTY REQ | Description |
| 1 | 0157-0036-1000 | 8 | 1/4"-20 x 1-1/4" LG. Screw (Stainless) | 1 | 0157-0036-1000 | 8 | 1/4"-20 x 1-1/4" LG. Screw (Stainless) |
| 2 | 0157-0023-1000 | 8 | 1/4" ID x 5/8" OD Washer (Stainless) | 2 | 0157-0023-1000 | 8 | 1/4" ID x 5/8" OD Washer (Stainless) |
| 3A | 0157-0114-1000 | 1* | Front Pump Housing, 2"MPT x 1.5"MPT (316SS) | 3B | 0157-0083-0100 | 1* | Front Pump Housing, 2"Flange x 1.5"Flange (316SS) |
| 4 | 0157-0011-1000 | 1 | 0.157" CS x 7.244" ID "O" Ring (Viton) | 4 | 0157-0011-1000 | 1 | 0.157" CS x 7.244" ID "O" Ring (Viton) |
| 5 | 0157-0001-1000 | 1 | Front Thrust Washer (Ceramic) | 5 | 0157-0001-1000 | 1 | Front Thrust Washer (Ceramic) |
| 6 | 0157-0002-1000 | 1 | Shaft (Ceramic) | 6 | 0157-0002-1000 | 1 | Shaft (Ceramic) |
| 7 | 0157-0029-0500 | 1 | Impeller with Carbon Bushing (316SS) | 7 | 0157-0029-0500 | 1 | Impeller with Carbon Bushing (316SS) |
| 8 | 0157-0009-1000 | 1 | Rear Thrust Washer (Ceramic) | 8 | 0157-0009-1000 | 1 | Rear Thrust Washer (Ceramic) |
| 9 | 0157-0115-1000 | 1* | Rear Housing (316SS) | 9 | 0157-0115-1000 | 1* | Rear Housing (316SS) |
| 10 | 0157-0005-0100 | 1 | Drive Magnet | 10 | 0157-0005-0100 | 1 | Drive Magnet |
| 11 | 0157-0008-0010 | 1 | Motor Bracket (Metal) | 11 | 0157-0008-0010 | 1 | Motor Bracket (Metal) |
| 12 | 0160-0031-1000 | 4 | 1/2"-13 x 1" Lg. Screw (Stainless) | 12 | 0160-0031-1000 | 4 | 1/2"-13 x 1" Lg. Screw (Stainless) |
| 13 | 0160-0032-1000 | 4 | 1/2"ID x 1-1-1/4"OD Washer (Stainless) | 13 | 0160-0032-1000 | 4 | 1/2"ID x 1-1-1/4"OD Washer (Stainless) |
| 14 | 0157-0065-1000 | 1 | TEFC Motor, 5HP, 230/460V, 3 Phase, 50/60Hz | 14 | 0157-0065-1000 | 1 | TEFC Motor, 5HP, 230/460V, 3 Phase, 50/60Hz |

*: The Front Housing and Rear Housing must be purchased as a set. The Set Part Number is 0157-0146-0100.

NOTE: Contact Factory for other materials and/or parts not listed.

Special voltage motors are available upon special order.

Materials in contact with the liquid: TE-8S-MD: 316SS, Carbon, Ceramic, Viton

LIMITED WARRANTY: March pumps are guaranteed only against defects in workmanship or materials for a period of one year from date of manufacture pumping water. For the complete warranty and to register online go to www.marchpump.com/warranty-registration