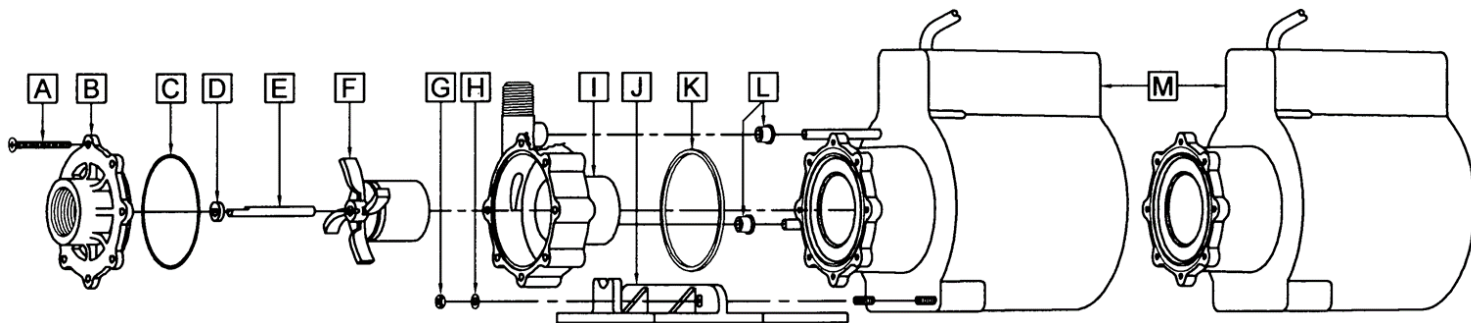




	60Hz										50Hz									
	Max Flow		Max Head			Electrical					Max Flow		Max Head			Electrical				
Model	GPM	LPM	FT	PSI	M	Ph	V	A	HP	kW	GPM	LPM	Feet	PSI	M	Ph	V	A	HP	kW
5C-MD	14.5	54.9	27	11.7	8.2	1	115 or 230	1.6 or 0.9	1/8	0.093	14.5	54.9	19.6	11.7	6	1	115 or 230	1.2 or 0.5	1/8	0.093
LC-5C-MD	14.5	54.9	27	11.7	8.2	1	115 or 230	1.6 or 0.9	1/8	0.093	14.5	54.9	19.6	11.7	6	1	115 or 230	1.2 or 0.5	1/8	0.093
All specifications & data are based on pumping water & are intended as a guideline only. Specifications may vary with different motors.																				



5C-MD				LC-5C-MD			
Item	Part Number	QTY REQ	Description	Item	Part Number	QTY REQ	Description
A	0150-0021-1000	7	#8-32 x 1-3/4 Lg Screw (Stainless)	A	0150-0021-1000	7	#8-32 x 1-3/4 Lg Screw (Stainless)
B	0150-0032-1000	1	Cover with 1" FPT Inlet (Polypropylene)	B	0150-0032-1000	1	Cover with 1" FPT Inlet (Polypropylene)
C	0750-0987-1000	1	0.078 CS x 2.834 ID O-Ring (Buna N)	C	0750-0987-1000	1	0.078 CS x 2.834 ID O-Ring (Buna N)
D	0130-0028-1000	1	Thrust Washer (Ceramic)	D	0130-0028-1000	1	Thrust Washer (Ceramic)
E	0130-0024-1000	1	Shaft	E	0130-0024-1000	1	Shaft
F	0150-0030-0100	1	Impeller with Ceramic Magnet (Polypropylene and Magnet)	F	0150-0030-0100	1	Impeller with Ceramic Magnet (Polypropylene and Magnet)
				G	0802-0008-1000	2	#10-32 Nut (Stainless)
				H	0802-0006-1000	2	#10 Lock Washer (Stainless)
I	0150-0031-0100	1	Rear Housing With Ceramic Thrust Washer (Polypropylene and Ceramic)	I	0150-0153-0200	1	Rear Housing With Ceramic Thrust Washer and Plug (Polypropylene and Ceramic)
J				J	0150-0155-1000	1	Mounting Base
K	0150-0020-1000		Bracket O Ring (Buna N)	K	0150-0020-1000		Bracket O Ring (Buna N)
M	N/A	1	Epoxy Motor Assembly	M	N/A	1	Epoxy Motor Assembly
				W	0150-0192-0100	1	Wet End Kit (Items: A, B, C, D, E, F, I)

Materials in contact with the solution :

5C: Polypropylene, Ceramic, Buna N, Ceramic Magnet, Noryl, Stainless Steel, Brass, Epxoy and Cord.

LC-5C-MD: Polypropylene, Buna N, Stainless Steel, Ceramic, Ceramic Magnet. When Submerged: Epoxy, Noryl, and Cord.

WARRANTY: <https://www.marchpump.com/about/warranty/>

NOTE: Contact Factory for other materials and/or parts not listed.

Special voltage motors are available upon special order.

For the General Installation Manual, see this link <https://www.marchpump.com/wp-content/uploads/2019/07/march-pump-general-installation-guide-0750-040.pdf>

Or Scan QR Code



0150-0060-1100-Rev 8.22.2025