



MARCH PUMPS

1819 PICKWICK AVE., GLENVIEW, IL 60026-1306, U.S.A
 PHONE: (847) 729-5300 - FAX: (847) 729-7062
 WWW.MARCHPUMP.COM

DESCRIPTION:

Series 8 are centrifugal magnetic drive pumps, eliminating the need for a shaft seal. Pumps are serviceable with an adjustable wrench. Screws should be tightened in sequence & uniformly. Do not over tighten the screws or you may crush the plastic housing bosses. See the parts list for a breakdown of parts.

MODEL ABBREVIATIONS:

C: Polypropylene, K: Kynar

OPERATION:

Pumps are not self-priming, lack a suction lift, and thus require a **flooded suction**. Pumps **cannot be run dry** because the impeller requires the liquid being pumped for lubrication. The direction of motor rotation should be clockwise when facing the inlet of the pump. For liquids with a specific gravity greater than water, have a higher viscosity, or for elevated temperatures, a trimmed impeller may be necessary. For application assistance, contact March Pump.

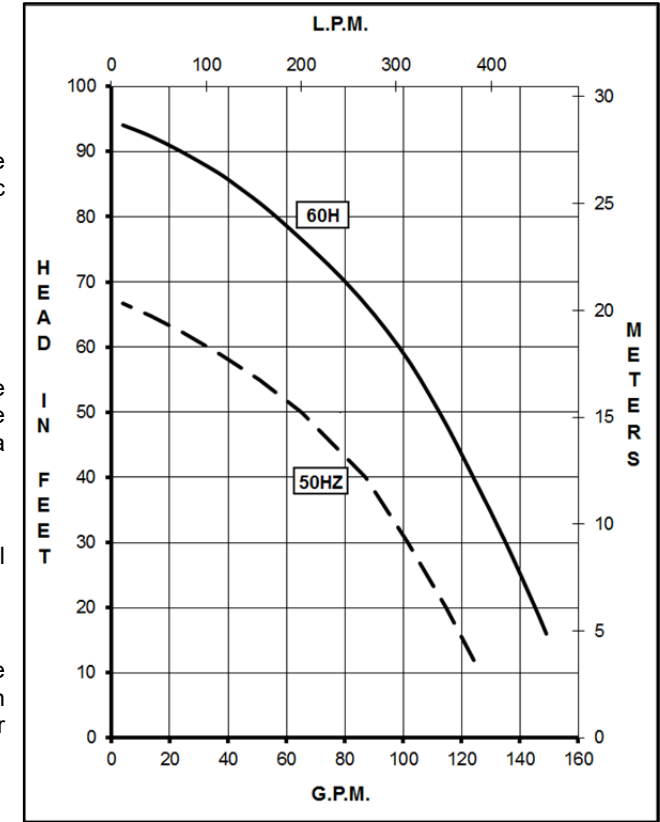
ELECTRICAL:

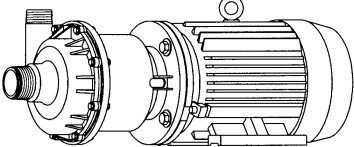
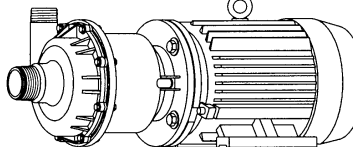
The motors are totally enclosed fan cooled, U.L. listed, and rated as continuous duty. Motors have a conduit box for electrical connection.

ASSEMBLY & DISASSEMBLY:

When replacing impeller bushings in the field, the plastic bushings must be bored to size after they have been pressed into the impeller. Bore to 0.630/0.632 I.D. The carbon & ceramic bushings are to finished size and do not require boring. When attaching the drive magnet to the motor shaft, position the face of the drive magnet 3/8 inch below the face of the motor bracket.

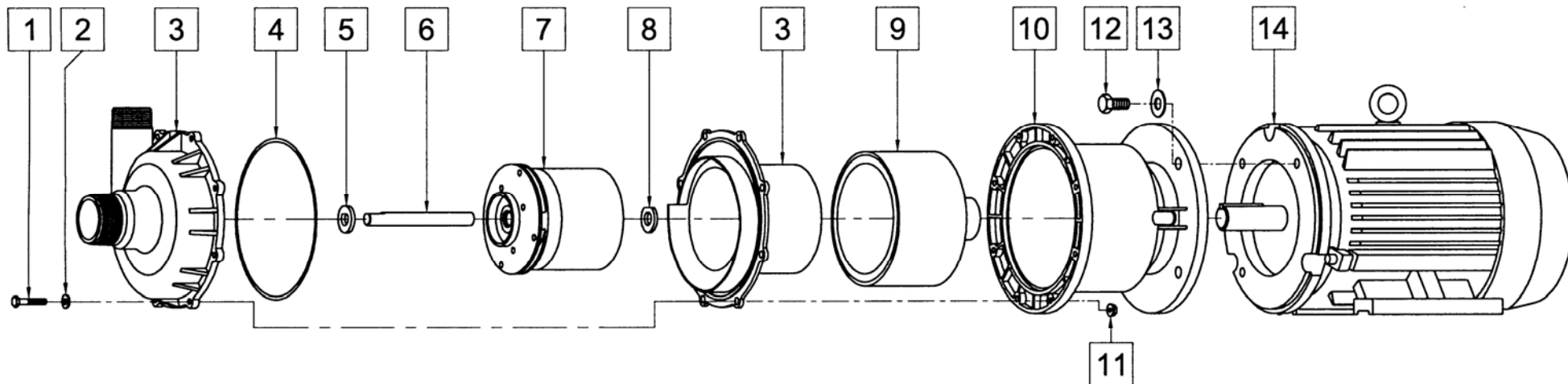
TE-8C-MD-HF, TE-8K-MD-HF



SPECIFICATIONS	TE-8C-MD-HF												TE-8K-MD-HF																			
																																
Product #	0157-0108-0100												0157-0109-0100																			
Inlet - Outlet	2" MPT - 1-1/2" MPT												2" MPT - 1-1/2" MPT																			
Max Internal Pressure	50 psi (344 kPa)												50 psi (344 kPa)																			
Max Liquid Temperature	190 °F (87 °C)												190 °F (87 °C)																			
MODEL	60 Hz												50 Hz												Height		Width		Length		Packed Weight	
	Max Flow	Max Head		ELECTRICAL						Max Flow	Max Head		ELECTRICAL						Inches	cm	Inches	cm	Inches	cm	lbs	kg						
	gpm	lpm	ft	psi	m	Ph	V	A	Hp	kW	Rpm	gpm	lpm	ft	psi	m	Ph	V	A	Hp	kW	Rpm										
TE-8C-MD-HF	150	568	95	41.2	29	3	230	11.8	5	3.7	3450	124	470	65.6	28.4	20	3	380	7.1	5	3.7	2850	10.48	26.6	11.45	29.0	24.38	61.9	142	64.41		
TE-8K-MD-HF	150	568	95	41.2	29	3	230	11.8	5	3.7	3450	124	470	65.6	28.4	20	3	380	7.1	5	3.7	2850	10.48	26.6	11.45	29.0	24.38	61.9	142	64.41		

All specifications & data are based on pumping water & are intended as a guideline only. Specifications may vary with different motors.

PARTS LIST



#	DESCRIPTION	MATERIAL	SIZE (Inches)	QTY.	TE-8C-MD-HF	TE-8K-MD-HF
1	Screw	Stainless	1/4-20 x 1-1/2 Lg.	8	0153-0011-1000	
2	Washer	Stainless	1/4 ID x 5/8 OD	8	0157-0023-1000	
3	Pump Housing Front and Rear	Polypropylene		1	0157-0110-0100	
		Kynar		1		0157-0111-0100
4	"O" Ring	Viton	0.157 CS x 7.244 ID	1	0157-0011-1000	
	"O" Ring (Option)	Viton/Teflon	1/8 CS x 7-1/2 OD	1	0157-0032-1000	
5	Thrust Washer (Front)	Ceramic		1	0157-0001-1000	
6	Shaft	Ceramic		1	0157-0002-1000	
7	Impeller w/Ryton Bushing	Polypropylene		1	0157-0004-0200	
		Kynar (Option)		1		0157-0050-0200
	Impeller w/Carbon Bushing	Polypropylene (Option)		1	0157-0004-0500	
		Kynar		1		0157-0050-0500
	Impeller w/Mica Teflon Bushing	Polypropylene (Option)		1	0157-0004-0700	
		Kynar (Option)		1		0157-0050-0700
8	Thrust Washer (Rear)	Ceramic		1	0157-0009-1000	
9	Drive Magnet			1	0157-0005-0100	
10	Motor Bracket	Plastic		1	0157-0100-1000	
11	Lock Nut (Serrated)	Stainless	1/4-20	8	0156-0053-1000	
12	Screw	Stainless	1/2-13 x 1 Lg.	4	0160-0031-1000	
13	Washer	Stainless	1/2 ID x 1-1/4 OD	4	0160-0032-1000	
14	TEFC Motor, 5 HP, 230/460 V, 3 Phase, 50/60 Hz			1	0157-0065-1000	

Materials in Contact with Solution

TE-8C-MD-HF: Polypropylene/Carbon Filled, Viton, Teflon/Ryton/Carbon, Ceramic

TE-8K-MD-HF: Kynar/Carbon Filled, Viton, Carbon, Ceramic

LIMITED WARRANTY:

March pumps are guaranteed only against defects in workmanship or materials for a period of one year from date of manufacture pumping water. For the complete warranty and to register online go to www.marchpump.com/warranty-registration

Explosion proof and special voltage motors are available upon special order.

NOTE: Contact Factory for other materials and/or parts not listed.

0157-0021-1100 R3