



MARCH PUMPS

1819 PICKWICK AVE., GLENVIEW, IL 60026-1306, U.S.A
 PHONE: (847) 729-5300 - FAX: (847) 729-7062
 WWW.MARCHPUMP.COM

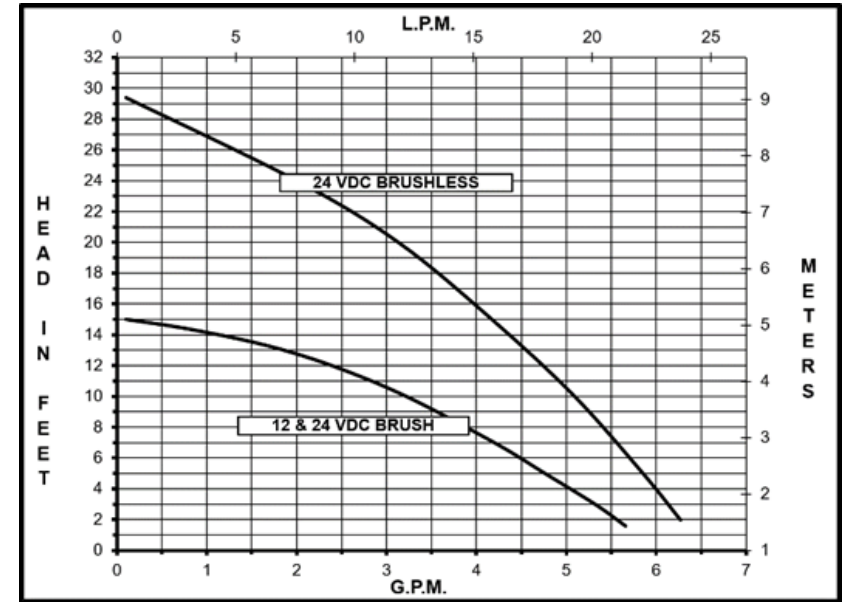
DESCRIPTION & OPERATION:

Series 2 are centrifugal magnetic drive pumps, eliminating the need for a shaft seal. Pumps can be serviced with a screwdriver. See the parts list for a breakdown of parts. Pumps are not self-priming, lack a suction lift, and thus require a **flooded suction**. Pumps **cannot be run dry** because the impeller requires the liquid being pumped for lubrication. For liquids with a specific gravity greater than water, have a higher viscosity, or for elevated temperatures, a trimmed impeller may be necessary. Brushless motors must be operated within a restricted voltage range due to the electronics. For application assistance, contact March Pump.

Brushtype Motor : 9" Leads, Red is positive, Black is negative

Brushless Motor: 11.5" Leads, Red is positive, Black is negative. Restricted Voltage Range: 14V-30V

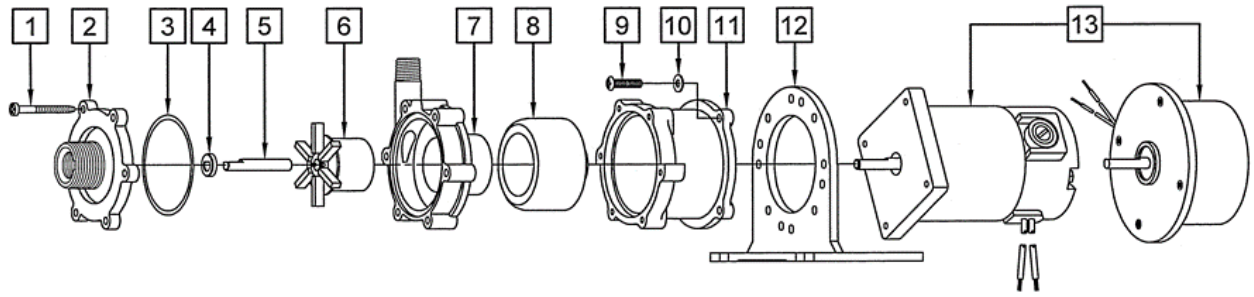
BC-2-MD Brush Type and Brushless



Specifications		BC-2CP-MD Brush Type	BC-2CP-MD Brushless	BC-2K-MD Brushless
Product	12V	0125-0123-0100	Not Available	Not Available
	24V	0125-0123-0200	0125-0123-0400	0125-0138-0300
Inlet-Outlet		3/8" FPT & 3/4" MPT-1/4" MPT	3/8" FPT & 3/4" MPT-1/4" MPT	3/8" FPT & 3/4" MPT-1/4" MPT
Max Internal Pressure		50PSI (344 kPa)	50PSI (344 kPa)	75PSI (517 kPa)
Max Liquid Temperature		190F (87C)	190F (87C)	200F (93C)

Model	Max Flow		Max Head			Electrical				
	GPM	LPM	FT	PSI	M	Voltage	Amps	HP	kW	RPM
BC-2CP-MD Brushtype	6	22.7	15	6.5	4.6	12/24	3.5/1.8	1/25	0.029	3650
BC-2C-MD Brushless	6.2	23.4	29	12.5	8.8	24	2.1	1/25	0.029	3800

All specifications & data are based on pumping water & are intended as a guideline only. Specifications may vary with different motors.




NOTE: When attaching the Drive Magnet to the motor shaft, position the face of the Drive Magnet 1/16 inch below the face of the Motor Bracket.

BC-2CP-MD Brushtype

BC-2CP-MD Brushless

Item	Part Number	QTY REQ	Description	Item	Part Number	QTY REQ	Description
1	0115-0062-1000	6	#7-19 x 1-7/16" Long Self-Tapping Screw (Stainless)	1	0115-0062-1000	6	#7-19 x 1-7/16" Long Self-Tapping Screw (Stainless)
2	0125-0056-1000	1	Cover with 3/8" FPT x 3/4" MPT Inlet (Polypropylene)	2	0125-0056-1000	1	Cover with 3/8" FPT x 3/4" MPT Inlet (Polypropylene)
3	0125-0065-1000	1	3/32" CS x 2-3/16" OD "O" Ring (Viton)	3	0125-0065-1000	1	3/32" CS x 2-3/16" OD "O" Ring (Viton)
4	0130-0028-1000	1	Thrust Washer (Ceramic)	4	0130-0028-1000	1	Thrust Washer (Ceramic)
5	0125-0061-1000	1	Shaft (Ceramic)	5	0125-0061-1000	1	Shaft (Ceramic)
6	0125-0087-0200	1	Encapsulated Impeller (Polypropylene)	6	0125-0087-0200	1	Encapsulated Impeller (Polypropylene)
7	0125-0058-1000	1	Rear Housing with 1/4" MPT Outlet (Polypropylene)	7	0125-0058-1000	1	Rear Housing with 1/4" MPT Outlet (Polypropylene)
8	0125-0083-0100	1	0.250" Bore Drive Magnet	11	0125-0083-0200	1	6MM Bore Drive Magnet
9	0210-0036-100	4	#8-32 x 3/4" Lg. Screw (Stainless)	9	0210-0036-100	4	#8-32 x 3/4" Lg. Screw (Stainless)
10	0858-0004-1000	4	#8 Washer (Stainless)	10	0858-0004-1000	4	#8 Washer (Stainless)
11	0125-0069-1000	1	Motor Bracket (Plastic)	11	0125-0069-1000	1	Motor Bracket (Plastic)
12	0125-0106-1000	1	Base (Plastic)	12	0125-0106-1000	1	Base (Plastic)
13A	0809-0101-1000	1	Motor, 12V, DC	13C	0125-0128-1000	1	Motor, 24V, DC
13B	0809-0103-1000	1	Motor, 24V, DC				

BC-2K-MD Brushless

NOTE: Contact Factory for other materials and/or parts not listed. Special voltage motors are available upon special order.				Item	Part Number	QTY REQ	Description
Materials in contact with the liquid BC-2C-MD: Polypropylene, Viton, Ceramic BC-2K-MD: Glass Filled Kynar, Viton, Ceramic				1	0115-0062-1000	6	#7-19 x 1-7/16" Long Self-Tapping Screw (Stainless)
				2	0125-0136-1000	1	Cover with 3/8" FPT x 3/4" MPT Inlet (Glass Filled Kynar)
LIMITED WARRANTY: March pumps are guaranteed only against defects in workmanship or materials for a period of one year from date of manufacture pumping water. For the complete warranty and to register online go to www.marchpump.com/warranty-registration				3	0125-0065-1000	1	3/32" CS x 2-3/16" OD "O" Ring (Viton)
				4	0130-0028-1000	1	Thrust Washer (Ceramic)
				5	0125-0061-1000	1	Shaft (Ceramic)
				6	0125-0101-0200	1	Encapsulated Impeller (Glass Filled Kynar)
				7	0125-0137-1000	1	Rear Housing with 1/4" MPT Outlet (Glass Filled Kynar)
				11	0125-0083-0200	1	6MM Bore Drive Magnet
For the General Installation Manual, see this link https://www.marchpump.com/wp-content/uploads/2019/07/march-pump-general-installation-guide-0750-040.pdf Or Scan QR Code 				9	0210-0036-100	4	#8-32 x 3/4" Lg. Screw (Stainless)
				10	0858-0004-1000	4	#8 Washer (Stainless)
				11	0125-0069-1000	1	Motor Bracket (Plastic)
				12	0125-0106-1000	1	Base (Plastic)
				13C	0125-0128-1000	1	Motor, 24V, DC