



# MARCH PUMPS

1819 PICKWICK AVE., GLENVIEW, IL 60026-1306, U.S.A  
PHONE: (847) 729-5300 - FAX: (847) 729-7062  
WWW.MARCHPUMP.COM

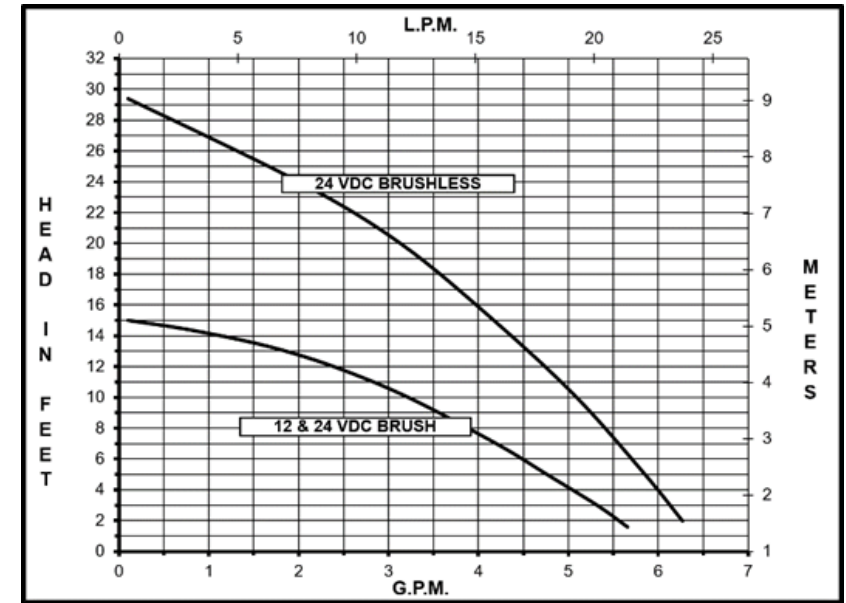
## DESCRIPTION & OPERATION:

Series 2 are centrifugal magnetic drive pumps, eliminating the need for a shaft seal. Pumps can be serviced with a screwdriver. See the parts list for a breakdown of parts. Pumps are not self-priming, lack a suction lift, and thus require a **flooded suction**. Pumps **cannot be run dry** because the impeller requires the liquid being pumped for lubrication. For liquids with a specific gravity greater than water, have a higher viscosity, or for elevated temperatures, a trimmed impeller may be necessary. Brushless motors must be operated within a restricted voltage range due to the electronics. For application assistance, contact March Pump.

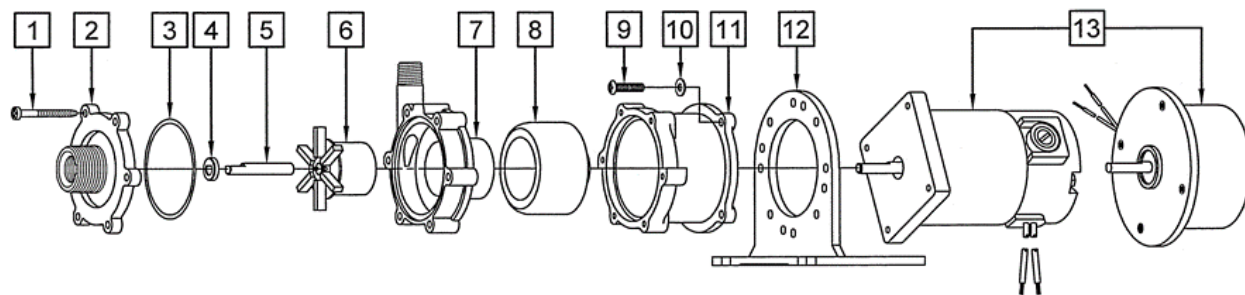
Brushtype Motor : 9" Leads, Red is positive, Black is negative

Brushless Motor: 11.5" Leads, Red is positive, Black is negative. Restricted Voltage Range: 14V-30V

## BC-2-MD Brush Type and Brushless



Specifications		BC-2CP-MD Brush Type				BC-2CP-MD Brushless				BC-2K-MD Brushless				
Product	12V		0125-0123-0100				Not Available				Not Available			
	24V		0125-0123-0200				0125-0123-0400				0125-0138-0300			
Inlet-Outlet			3/8" FPT & 3/4" MPT-1/4" MPT				3/8" FPT & 3/4" MPT-1/4" MPT				3/8" FPT & 3/4" MPT-1/4" MPT			
Max Internal Pressure			50PSI (344 kPa)				50PSI (344 kPa)				75PSI (517 kPa)			
Max Liquid Temperature			190F (87C)				190F (87C)				200F (93C)			
	Max Flow			Max Head										
Model	GPM	LPM	Feet	PSI	Meters									
BC-2CP-MD Brushtype	6	22.7	15	6.5	4.6									
BC-2C-MD Brushless	6.2	23.4	29	12.5	8.8									
All specifications & data are based on pumping water & are intended as a guideline only. Specifications may vary with different motors.														



**NOTE:** When attaching the Drive Magnet to the motor shaft, position the face of the Drive Magnet 1/16 inch below the face of the Motor Bracket.

#### BC-2CP-MD Brushtype

Item	Part Number	QTY REQ	Description
1	0115-0062-1000	6	#7-19 x 1-7/16" Long Self-Tapping Screw (Stainless)
2	0125-0056-1000	1	Cover with 3/8" FPT x 3/4" MPT Inlet (Polypropylene)
3	0125-0065-1000	1	3/32" CS x 2-3/16" OD "O" Ring (Viton)
4	0130-0028-1000	1	Thrust Washer (Ceramic)
5	0125-0061-1000	1	Shaft (Ceramic)
6	0125-0087-0200	1	Encapsulated Impeller (Polypropylene)
7	0125-0058-1000	1	Rear Housing with 1/4" MPT Outlet (Polypropylene)
8	0125-0083-0100	1	0.250" Bore Drive Magnet
9	0210-0036-100	4	#8-32 x 3/4" Lg. Screw (Stainless)
10	0858-0004-1000	4	#8 Washer (Stainless)
11	0125-0069-1000	1	Motor Bracket (Plastic)
12	0125-0106-1000	1	Base (Plastic)
13A	0809-0101-1000	1	Motor, 12V, DC
13B	0809-0103-1000	1	Motor, 24V, DC

#### BC-2CP-MD Brushless

Item	Part Number	QTY REQ	Description
1	0115-0062-1000	6	#7-19 x 1-7/16" Long Self-Tapping Screw (Stainless)
2	0125-0056-1000	1	Cover with 3/8" FPT x 3/4" MPT Inlet (Polypropylene)
3	0125-0065-1000	1	3/32" CS x 2-3/16" OD "O" Ring (Viton)
4	0130-0028-1000	1	Thrust Washer (Ceramic)
5	0125-0061-1000	1	Shaft (Ceramic)
6	0125-0087-0200	1	Encapsulated Impeller (Polypropylene)
7	0125-0058-1000	1	Rear Housing with 1/4" MPT Outlet (Polypropylene)
11	0125-0083-0200	1	6MM Bore Drive Magnet
9	0210-0036-100	4	#8-32 x 3/4" Lg. Screw (Stainless)
10	0858-0004-1000	4	#8 Washer (Stainless)
11	0125-0069-1000	1	Motor Bracket (Plastic)
12	0125-0106-1000	1	Base (Plastic)
13C	0125-0128-1000	1	Motor, 24V, DC

#### BC-2K-MD Brushless

NOTE: Contact Factory for other materials and/or parts not listed.  
Special voltage motors are available upon special order.

#### Materials in contact with the liquid

**BC-2C-MD:** Polypropylene, Viton, Ceramic

**BC-2K-MD:** Glass Filled Kynar, Viton, Ceramic

**WARRANTY:** <https://www.marchpump.com/about/warranty/>

For the General Installation Manual, see this link

<https://www.marchpump.com/wp-content/uploads/2019/07/march-pump-general-installation-guide-0750-040.pdf>

Or Scan QR Code



Item	Part Number	QTY REQ	Description
1	0115-0062-1000	6	#7-19 x 1-7/16" Long Self-Tapping Screw (Stainless)
2	0125-0136-1000	1	Cover with 3/8" FPT x 3/4" MPT Inlet (Glass Filled Kynar)
3	0125-0065-1000	1	3/32" CS x 2-3/16" OD "O" Ring (Viton)
4	0130-0028-1000	1	Thrust Washer (Ceramic)
5	0125-0061-1000	1	Shaft (Ceramic)
6	0125-0101-0200	1	Encapsulated Impeller (Glass Filled Kynar)
7	0125-0137-1000	1	Rear Housing with 1/4" MPT Outlet (Glass Filled Kynar)
11	0125-0083-0200	1	6MM Bore Drive Magnet
9	0210-0036-100	4	#8-32 x 3/4" Lg. Screw (Stainless)
10	0858-0004-1000	4	#8 Washer (Stainless)
11	0125-0069-1000	1	Motor Bracket (Plastic)
12	0125-0106-1000	1	Base (Plastic)
13C	0125-0128-1000	1	Motor, 24V, DC