



# MARCH PUMPS

1819 PICKWICK AVE., GLENVIEW, IL 60026-1306, U.S.A  
 PHONE: (847) 729-5300 - FAX: (847) 729-7062  
 WWW.MARCHPUMP.COM

**DESCRIPTION:**

Series 5.5 are centrifugal magnetic drive pumps, eliminating the need for a shaft seal. Pumps can be serviced with a screwdriver. Screws should be tightened in sequence and uniformly. Do not over tighten the screws or you may crush the plastic housing bosses.

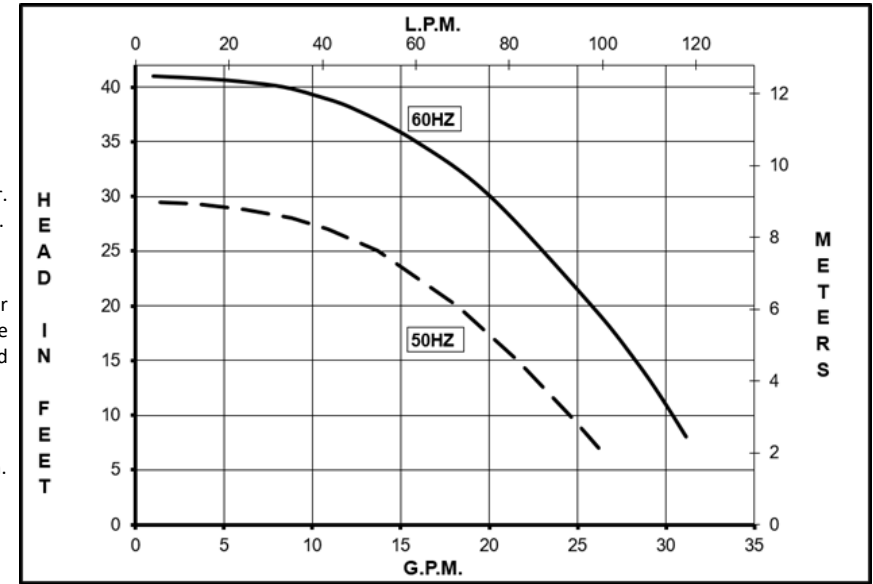
**OPERATION:**

Pumps are not self-priming, lack a suction lift, and thus require a **flooded suction**. Pumps **cannot be run dry** because the impeller requires the liquid being pumped for lubrication. The direction of motor rotation should be clockwise when facing the inlet of the pump. For liquids with a specific gravity greater than water, have a higher viscosity, or for elevated temperatures, a trimmed impeller may be necessary. For application assistance, contact March Pump.

**ELECTRICAL:**

Pumps are 115/230V, 1 phase, air-cooled. Motors are Air Cooled and are U.L. listed as well as rated for continuous operation. Motors have a junction box for electrical connections. Explosion proof and special voltage motors are available upon special order.

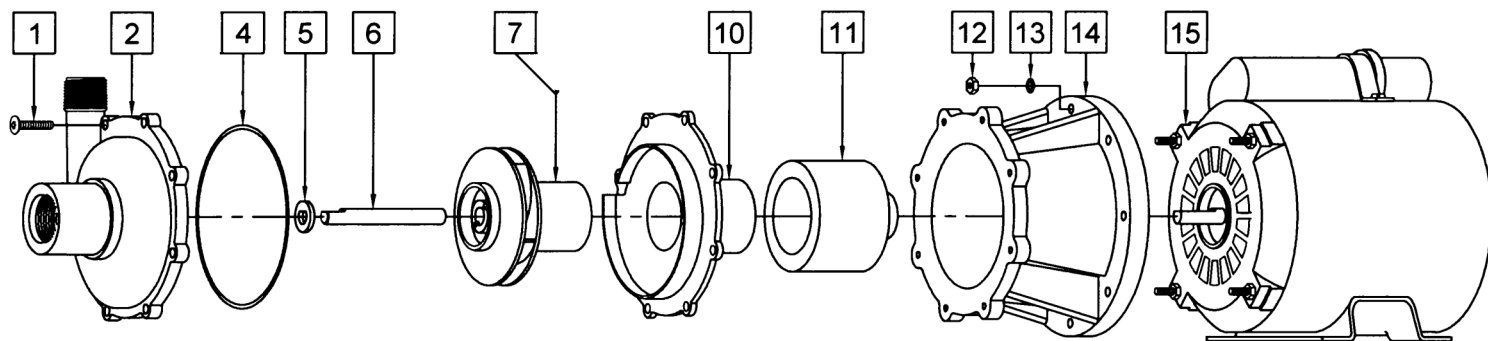
## TE-5.5C-MD-AC, TE-5.5K-MD-AC



Specifications		TE-5.5C-MD-AC	TE-5.5K-MD-AC
Product	1 Phase	0151-0027-0200	0151-0027-0400
Inlet-Outlet		1" FPT - 3/4" MPT	1" FPT - 3/4" MPT
Max Internal Pressure		50 psi (344 kPa)	75 psi (517 kPa)
Max Liquid Temperature		190F (87C)	200F (93C)

Model	60Hz												50Hz											
	Max Flow		Max Head			Electrical							Max Flow		Max Head			Electrical						
	GPM	LPM	FT	PSI	M	Ph	V	A	HP	kW	RPM	GPM	LPM	Feet	PSI	M	Ph	V	A	HP	kW	RPM		
TE-5.5C-MD-AC	30	114	41	17.8	12.5	1	115/230	2.7/1.4	1/5	0.149	3450	27	102	29.5	12.8	9	1	115/230	2.9/1.4	1/5	0.149	2850		
TE-5.5K-MD-AC	30	114	41	17.8	12.5	1	115/230	2.7/1.4	1/5	0.149	3450	27	102	29.5	12.8	9	1	115/230	2.9/1.4	1/5	0.149	2850		

All specifications & data are based on pumping water & are intended as a guideline only. Specifications may vary with different motors.



**NOTE:** When attaching the Drive Magnet to the motor shaft, position the face of the Drive Magnet flush with the face of the Motor Bracket.

TE-5.5C-MD-AC				TE-5.5K-MD-AC			
Item	Part Number	QTY REQ	Description	Item	Part Number	QTY REQ	Description
1	0135-0180-1000	8	#10-32 x 1" Long Screw (Stainless)	3	0135-0180-1000	8	#10-32 x 1" Long Screw (Stainless)
2	0151-0027-1000	1	Front Housing (Polypropylene)	2	0151-0044-1000	1	Front Housing (Kynar)
3	0153-0015-1000	1	3/32" CS x 4-7/16" OD "O" Ring (Viton)	3	0153-0015-1000	1	3/32" CS x 4-7/16" OD "O" Ring (Viton)
5	0155-0009-1000	1	Thrust Washer (Ceramic)	5	0155-0009-1000	1	Thrust Washer (Ceramic)
6	0153-0007-1000	1	Shaft (Ceramic)	6	0153-0007-1000	1	Shaft (Ceramic)
7	0151-0029-0500	1	Impeller (Polypropylene)	7	0151-0046-0300	1	Impeller (Kynar)
10	0151-0028-0100	1	Rear Housing (Polypropylene) with Ceramic Thrust Washer	10	0151-0045-0100	1	Rear Housing (Kynar) with Ceramic Thrust Washer
11	0151-0061-0200	1	Drive Magnet	11	0151-0061-0200	1	Drive Magnet
12	0410-0039-1000	4	Hex Nut (Brass)	12	0410-0039-1000	4	Hex Nut (Brass)
13	0620-0010-1000	4	Lock Washer (Plastic)	13	0620-0010-1000	4	Lock Washer (Plastic)
14	0151-0041-0100	1	Motor Bracket	14	0151-0041-0100	1	Motor Bracket
15	0175-0087-1000	1	1 Phase Motor	16	0175-0087-1000	1	1 Phase Motor
W	0151-0069-0100	1	Wet End Kit (Items: 3,4,6,7,8,9,10)	W	0151-0070-0100	1	Wet End Kit (Items: 3,4,6,7,8,9,10)
Materials in contact with the solution							
TE-5.5C-MD-AC		Polypropylene, Ceramic, Viton					
TE-5.5K-MD-AC		Glass Filled Kynar, Ceramic, Viton					
<b>LIMITED WARRANTY:</b> March pumps are guaranteed only against defects in workmanship or materials for a period of one year from date of manufacture pumping water. For the complete warranty and to register online go to <a href="http://www.marchpump.com/warranty-registration">www.marchpump.com/warranty-registration</a>							
NOTE: Contact Factory for other materials and/or parts not listed.				Explosion proof and special voltage motors are available upon special order.			
For the General Installation Manual, see this link <a href="https://www.marchpump.com/wp-content/uploads/2019/07/march-pump-general-installation-guide-0750-040.pdf">https://www.marchpump.com/wp-content/uploads/2019/07/march-pump-general-installation-guide-0750-040.pdf</a> or Scan QR Code							
