



# MARCH PUMPS

1819 PICKWICK AVE., GLENVIEW, IL 60026-1306, U.S.A  
 PHONE: (847) 729-5300 - FAX: (847) 729-7062  
 WWW.MARCHPUMP.COM

## AC-2CP-MD, AC-2AP-MD, BC-2CP-MD, BC-2AP-MD

**DESCRIPTION:** Series 2 are centrifugal magnetic drive pumps, eliminating the need for a shaft seal. Pumps can be serviced with a screwdriver. See the parts list for a breakdown of parts. BC models have an encapsulated impeller magnet.

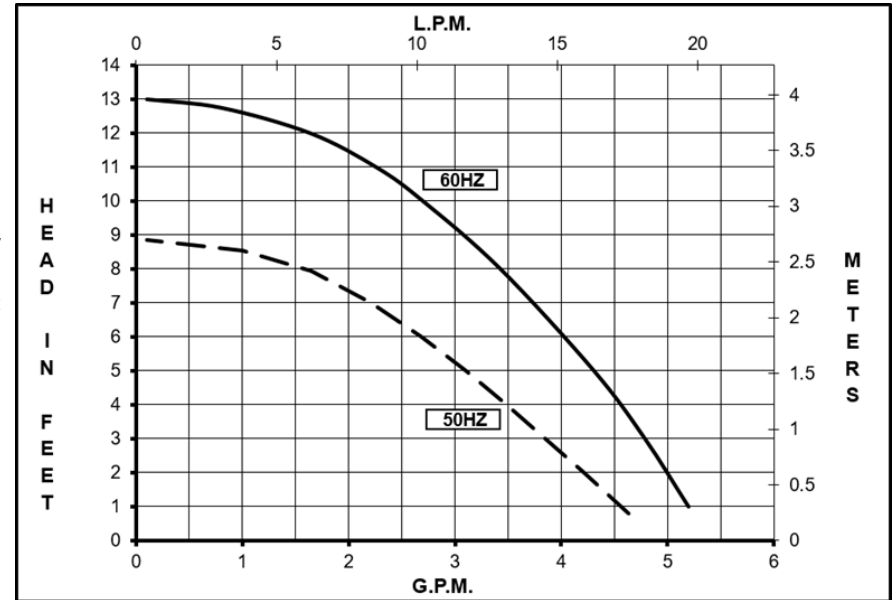
**OPERATION:** Pumps are not self-priming, lack a suction lift, and thus require a **flooded suction**. Pumps **cannot be run dry** because the impeller requires the liquid being pumped for lubrication. For liquids with a specific gravity greater than water, have a higher viscosity, or for elevated temperatures, a trimmed impeller may be necessary. For application assistance, contact March Pump.

**ELECTRICAL:** The AC-2CP-MD & AC-2AP-MD open air cooled motors as well as BC-2CP-MD & BC-2AP-MD blast cooled motors are available in different electrical configurations such as, 115V 50/60Hz, or 230V 50/60Hz, 1 phase.

AC-2CP-MD & AC-2AP-MD have an air cooled motor with a 3 ft (0.9 m) cord.

BC-2CP-MD & BC-2AP-MD have a blast cooled motor with a 3 ft (0.9 m) cord.

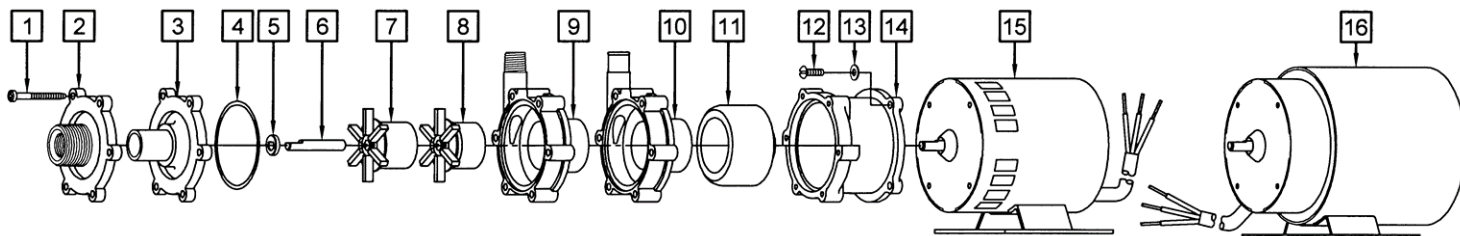
All motors are U.L. listed and rated for continuous duty.



Specifications		AC-2CP-MD	AC-2AP-MD	BC-2CP-MD	BC-2AP-MD
Product	115V	0125-0069-0100	0125-0069-0400	0125-0088-0100	0125-0088-0400
	230V	0125-0069-0300	0125-0069-0500	0125-0088-0200	0125-0088-0500
Inlet-Outlet		3/8" FPT & 3/4" MPT-1/4" MPT	3/4" OD-1/2" OD	3/8" FPT & 3/4" MPT-1/4" MPT	3/4" OD-1/2" OD
Max Internal Pressure		50PSI (344 kPa)	50PSI (344 kPa)	50PSI (344kPa)	50PSI (344 kPa)
Max Liquid Temperature		190F/87C	190F/87C	190F/87C	190F/87C

Model	60Hz												50Hz											
	Max Flow		Max Head			Electrical							Max Flow		Max Head			Electrical						
	GPM	LPM	FT	PSI	M	Ph	V	A	HP	kW	RPM	GPM	LPM	Feet	PSI	M	Ph	V	A	HP	kW	RPM		
AC-2CP-MD	5	18.9	13	5.7	4	1	115/230	1.2/0.6	1/40	0.019	3450	4.89	18.5	8.8	3.8	2.7	1	115/230	1.2/0.6	1/40	0.019	2850		
AC-2AP-MD	5	18.9	13	5.7	4	1	115/230	1.2/0.6	1/40	0.019	3450	4.89	18.5	8.8	3.8	2.7	1	115/230	1.2/0.6	1/40	0.019	2850		
BC-2CP-MD	5	18.9	13	5.7	4	1	115/230	1.2/0.5	1/40	0.019	3450	4.89	18.5	8.8	3.8	2.7	1	115/230	1.2/0.5	1/40	0.019	2850		
BC-2AP-MD	5	18.9	13	5.7	4	1	115/230	1.2/0.5	1/40	0.019	3450	4.89	18.5	8.8	3.8	2.7	1	115/230	1.2/0.5	1/40	0.019	2850		

All specifications & data are based on pumping water & are intended as a guideline only. Specifications may vary with different motors.



**NOTE:** When attaching the Drive Magnet to the motor shaft, position the face of the Drive Magnet 1/16 inch below the face of the Motor Bracket.

AC-2CP-MD				BC-2CP-MD			
Item	Part Number	QTY REQ	Description	Item	Part Number	QTY REQ	Description
1	0115-0062-1000	6	#7-19 x 1-7/16" Long Self-Tapping Screw (Stainless)	1	0115-0062-1000	6	#7-19 x 1-7/16" Long Self-Tapping Screw (Stainless)
2	0125-0056-1000	1	Cover with 3/8" FPT x 3/4" MPT Inlet (Polypropylene)	2	0125-0056-1000	1	Cover with 3/8" FPT x 3/4" MPT Inlet (Polypropylene)
4	0125-0065-1000	1	3/32" CS x 2-3/16" OD "O" Ring (Viton)	4	0125-0065-1000	1	3/32" CS x 2-3/16" OD "O" Ring (Viton)
5	0130-0028-1000	1	Thrust Washer (Ceramic)	5	0130-0028-1000	1	Thrust Washer (Ceramic)
6	0125-0061-1000	1	Shaft (Ceramic)	6	0125-0061-1000	1	Shaft (Ceramic)
8	0125-0055-0100	1	Impeller with Bare Ceramic Magnet (Polypropylene)	7	0125-0087-0200	1	Encapsulated Impeller (Polypropylene)
9	0125-0058-1000	1	Rear Housing with 1/4" MPT Outlet (Polypropylene)	9	0125-0058-1000	1	Rear Housing with 1/4" MPT Outlet (Polypropylene)
11	0125-0083-0100	1	0.250" Bore Drive Magnet	11	0125-0083-0100	1	0.250" Bore Drive Magnet
12	0150-0015-1000	4	#8-32 x 1/2" Long Screw (Stainless)	12	0150-0015-1000	4	#8-32 x 1/2" Long Screw (Stainless)
13	0858-0004-1000	4	#8 Washer (Stainless)	13	0858-0004-1000	4	#8 Washer (Stainless)
14	0125-0069-1000	1	Motor Bracket (Plastic)	14	0125-0069-1000	1	Motor Bracket (Plastic)
15A	0125-0052-1000	1	Motor 115V, 50/60Hz, Air Cooled	16A	0125-0088-1000	1	Motor 115V, 50/60Hz, Blast Cooled
15B	0125-0063-1000	1	Motor 230V, 50/60Hz, Air Cooled	16B	0125-0089-1000	1	Motor 230V, 50/60Hz, Blast Cooled
W	0125-0108-0200	1	Wet End Kit (1,2,4,5,6,8,9)	W	0125-0109-0200	1	Wet End Kit (1,2,4,5,6,7,9)
AC-2AP-MD				BC-2AP-MD			
1	0115-0062-1000	6	#7-19 x 1-7/16" Long Self-Tapping Screw (Stainless)	1	0115-0062-1000	6	#7-19 x 1-7/16" Long Self-Tapping Screw (Stainless)
3	0125-0096-1000	1	Cover with 3/4" OD Smooth Inlet (Polypropylene)	3	0125-0096-1000	1	Cover with 3/4" OD Smooth Inlet (Polypropylene)
4	0125-0065-1000	1	3/32" CS x 2-3/16" OD "O" Ring (Viton)	4	0125-0065-1000	1	3/32" CS x 2-3/16" OD "O" Ring (Viton)
5	0130-0028-1000	1	Thrust Washer (Ceramic)	5	0130-0028-1000	1	Thrust Washer (Ceramic)
6	0125-0061-1000	1	Shaft (Ceramic)	6	0125-0061-1000	1	Shaft (Ceramic)
8	0125-0055-0100	1	Impeller with Bare Ceramic Magnet (Polypropylene)	7	0125-0087-0200	1	Encapsulated Impeller (Polypropylene)
10	1008-0001-1000	1	Rear Housing with 1/2" OD Smooth Outlet (Polypropylene)	10	1008-0001-1000	1	Rear Housing with 1/2" OD Smooth Outlet (Polypropylene)
11	0125-0083-0100	1	0.250" Bore Drive Magnet	11	0125-0083-0100	1	0.250" Bore Drive Magnet
12	0150-0015-1000	4	#8-32 x 1/2" Long Screw (Stainless)	12	0150-0015-1000	4	#8-32 x 1/2" Long Screw (Stainless)
13	0858-0004-1000	4	#8 Washer (Stainless)	13	0858-0004-1000	4	#8 Washer (Stainless)
14	0125-0069-1000	1	Motor Bracket (Plastic)	14	0125-0069-1000	1	Motor Bracket (Plastic)
15A	0125-0052-1000	1	Motor 115V, 50/60Hz, Air Cooled	16A	0125-0088-1000	1	Motor 115V, 50/60Hz, Blast Cooled
15B	0125-0063-1000	1	Motor 230V, 50/60Hz, Air Cooled	16B	0125-0089-1000	1	Motor 230V, 50/60Hz, Blast Cooled

NOTE: Contact Factory for other materials and/or parts not listed.

Special voltage motors are available upon special order.

**Materials in contact with the liquid:** AC Models: Polypropylene, Viton, Ceramic, Ceramic Magnet. BC Models: Polypropylene, Viton, Ceramic

**LIMITED WARRANTY:** March pumps are guaranteed only against defects in workmanship or materials for a period of one year from date of manufacture pumping water. For the complete warranty and to register online go to [www.marchpump.com/warranty-registration](http://www.marchpump.com/warranty-registration)

For the General Installation Manual, see this link <https://www.marchpump.com/wp-content/uploads/2019/07/march-pump-general-installation-guide-0750-040.pdf>

Or Scan QR Code

