



MARCH PUMPS

1819 PICKWICK AVE., GLENVIEW, IL 60026-1306, U.S.A
 PHONE: (847) 729-5300 - FAX: (847) 729-7062
 WWW.MARCHPUMP.COM

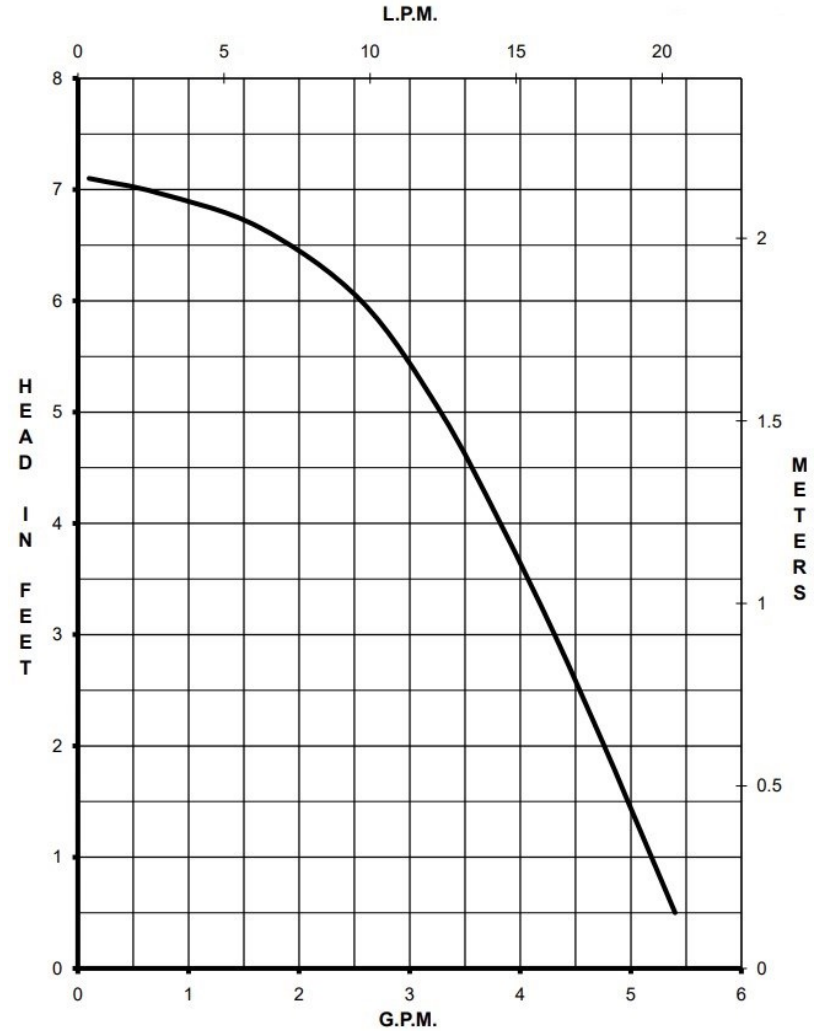
DESCRIPTION & OPERATION: 809 Series hot water booster centrifugal magnetic drive pumps are built to handle liquid transfer in heating and cooling operations. Contact the factory for application assistance. Pumps are not self-priming, lack a suction lift, and thus require a flooded suction. Pumps cannot be run dry.

INSTALLATIONS: Pumps should be installed with the pump housing arrow pointing in the direction of flow within the system. If the arrow indicating flow is not in the direction required, remove the housing screws holding the housing to the motor bracket and rotate the housing assembly as required. Replace the screws and tighten. The pump is composed of a wet end assembly which can be separated by unscrewing the housing screws. The pump will then separate into 2 parts. The liquid will be contained within the wet end assembly unless the rear housing screws on the rear housing are loosened.

GENERAL SAFETY INFORMATION: Follow all local safety codes & the Occupational Safety and Health Act (OSHA). Make certain that the power source conforms to the requirements of your equipment. Always disconnect power source before performing any work on or near the electric motor. Caution must be exercised to relieve any pressure in the system & in draining hot water from the pump or the system.

ELECTRICAL: Motor type is brush DC in 12 Volt or 24 Volt. The red lead is positive & the black lead is negative.

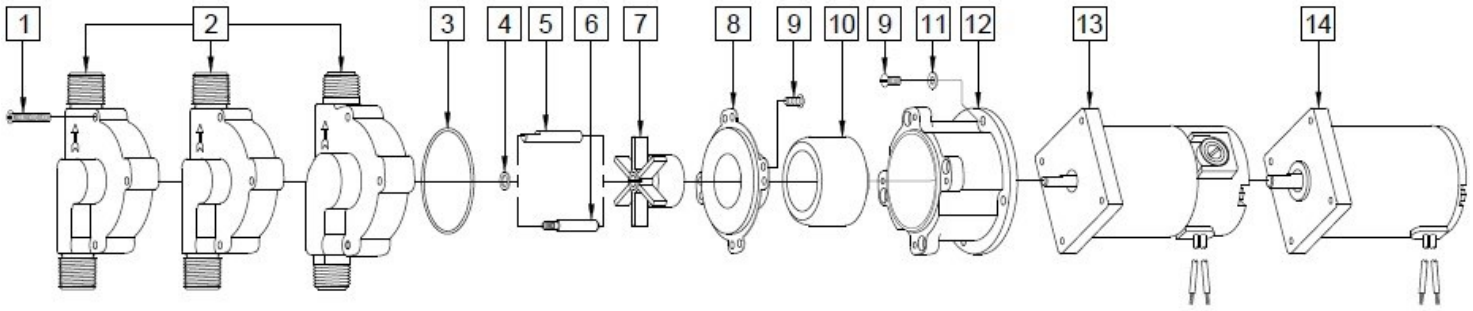
809 Slow Speed Inline DC



Specifications		809-BR	809-PL	809-SS
Product	12V	0809-0100-0200	0809-0100-0800	0809-0215-0100
	24V	0809-0102-0100	0809-0100-0900	0809-0215-0200
Inlet-Outlet		1/2" MPT-1/2" MPT	1/2" MPT-1/2" MPT	1/2" MPT-1/2" MPT
Max Internal Pressure		150PSI (1034 kPa)	50PSI (344 kPa)	150PSI (1034 kPa)
Max Liquid Temperature		250F (121C)	250F (121C)	250F (121C)

Model	Max Flow		Max Head			Electrical				
	GPM	LPM	FT	PSI	M	V	A	HP	kW	RPM
809-BR	5	18.9	7.1	3.07	2.1	12 or 24	1.1 or 0.55	1/100	0.007	1850
809-PL	5	18.9	7.1	3.07	2.1	12 or 24	1.1 or 0.55	1/100	0.007	1850
809-SS	5	18.9	7.1	3.07	2.1	12 or 24	1.1 or 0.55	1/100	0.007	1850

All specifications & data are based on pumping water & are intended as a guideline only. Specifications may vary with different motors.



809-BR				809-PL			
Item	Part Number	QTY REQ	Description	Item	Part Number	QTY REQ	Description
1	0923-0003-1000	4	#8-32 x 1 Lg. Screw (Steel)	1	0923-0003-1000	4	#8-32 x 1 Lg. Screw (Steel)
2	0809-0013-0000	1	Pump Housing (Bronze)	2	0809-0079-0100	1	Pump Housing (Polysulfone)
3	0809-0165-1000	1	0.070 CS x 2.441 ID O-Ring (Silicone)	3	0809-0027-1000	1	1/16 CS x 2-3/8 ID O-Ring (Silicone)
4	0809-0043-1000	1	Thrust Washer (Teflon)	4	0809-0043-1000	1	Thrust Washer (Teflon)
6	0809-0214-1000	1	Left-Hand Thread (Stainless Steel)	5	0809-0161-1000	1	"D" Flat Shaft (Stainless Steel)
7	0809-0005-0100	1	2" Impeller (Ryton/Teflon/Glass)	7	0809-0005-0100	1	2" Impeller (Ryton/Teflon/Glass)
8	0809-0012-1000	1	Rear Housing (Stainless)	8	0809-0012-1000	1	Rear Housing (Stainless)
9	0135-0040-1000	8	#8-32 x 3/8Lg. Screw (Stainless)	9	0135-0040-1000	8	#8-32 x 3/8Lg. Screw (Stainless)
10	0125-0083-0100	1	Drive Magnet for 12V Motor (0.250 Bore)	10	0125-0083-0100	1	Drive Magnet for 12V Motor (0.250 Bore)
10	0809-0117-0100	1	Drive Magnet for 24V Motor (0.312 Bore)	10	0809-0117-0100	1	Drive Magnet for 24V Motor (0.312 Bore)
11	0858-0004-1000	4	#8 Washer (Stainless)	11	0858-0004-1000	4	#8 Washer (Stainless)
12	0809-0058-1000	1	Motor Bracket (Plastic)	12	0809-0058-1000	1	Motor Bracket (Plastic)
13	0809-0100-1000	1	12V Brush Motor	13	0809-0100-1000	1	12V Brush Motor
14	0809-0102-1300	1	24V Brush Motor (Non Replaceable Brushes)	14	0809-0102-1300	1	24V Brush Motor (Non Replaceable Brushes)
809-SS				<p>DISASSEMBLY & REASSEMBLY: The motor can be removed from the wet end assembly without draining the liquid from the system. To do so remove four housing screws and slide the motor assembly away. If parts inside the wet end assembly must be removed, isolate the pump or drain the system. When the system is drained and cool, remove the four screws from the rear of the housing. The rear housing can now be removed. Remaining pump parts can be removed. Replace any worn or damaged parts. Replace the O-ring anytime the rear housing is removed.</p> <p>Materials in contact with the liquid:</p> <p>809-BR: Bronze, Stainless Steel, Ryton/Teflon/Carbon, Silicone, Teflon</p> <p>809-PL: Polysulfone, Stainless Steel, Ryton/Teflon/Carbon, Silicone, Teflon</p> <p>809-SS: Stainless Steel, Ryton/Teflon/Carbon, Silicone, Teflon</p> <p>NOTE: Contact Factory for other materials and/or parts not listed. Special voltage motors are available upon special order.</p>			
1	0809-0205-1000	4	#8-32 x 1 Lg. Screw (Stainless)				
2	0809-0211-0010	1	Pump Housing (Stainless Steel)				
3	0809-0165-1000	1	0.070 CS x 2.441 ID O-Ring (Silicone)				
4	0809-0043-1000	1	Thrust Washer (Teflon)				
6	0809-0214-1000	1	Left-Hand Thread (Stainless Steel)				
7	0809-0005-0100	1	2" Impeller (Ryton/Teflon/Glass)				
8	0809-0012-1000	1	Rear Housing (Stainless)				
9	0135-0040-1000	8	#8-32 x 3/8Lg. Screw (Stainless)				
10	0125-0083-0100	1	Drive Magnet for 12V Motor (0.250 Bore)				
10	0809-0117-0100	1	Drive Magnet for 24V Motor (0.312 Bore)				
11	0858-0004-1000	4	#8 Washer (Stainless)				
12	0809-0058-1000	1	Motor Bracket (Plastic)				
13	0809-0100-1000	1	12V Brush Motor				
14	0809-0102-1300	1	24V Brush Motor (Non Replaceable Brushes)				

LIMITED WARRANTY: March pumps are guaranteed only against defects in workmanship or materials for a period of one year from date of manufacture pumping water. For the complete warranty and to register online go to www.marchpump.com/warranty-registration

For the General Installation Manual, visit www.marchpump.com/resources/march-pump-general-installation-guide or scan the QR code.

