



MARCH PUMPS 893 BRUSHLESS

1819 PICKWICK AVE., GLENVIEW, IL 60026-1306, U.S.A
 PHONE: (847) 729-5300 - FAX: (847) 729-7062
 WWW.MARCHPUMP.COM

Paragon Motor w/Voltage Protection
 893-11 & 893-12

Series 893 are centrifugal magnetic drive pumps, eliminating the need for a shaft seal.

A **flooded suction** is essential for operation since the pump is not self-priming. Pumps **cannot be run dry** because the impeller requires the liquid being pumped for lubrication. For application assistance, contact March Pump.

ELECTRICAL:

The Brushless Motors have voltage protection. Red lead is positive, black lead is negative.

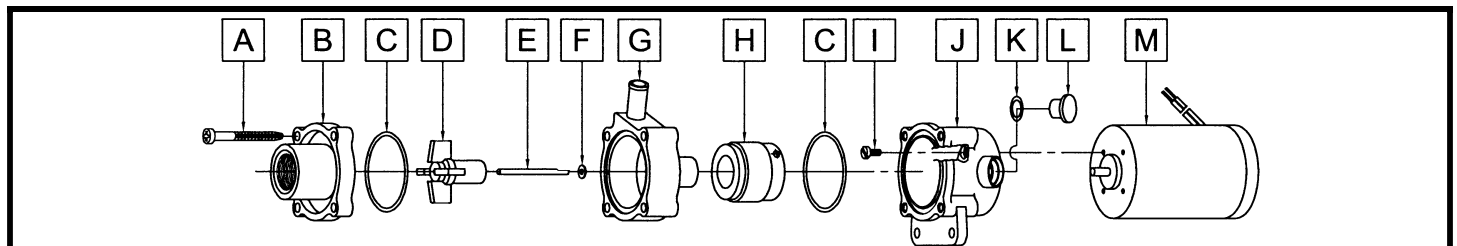
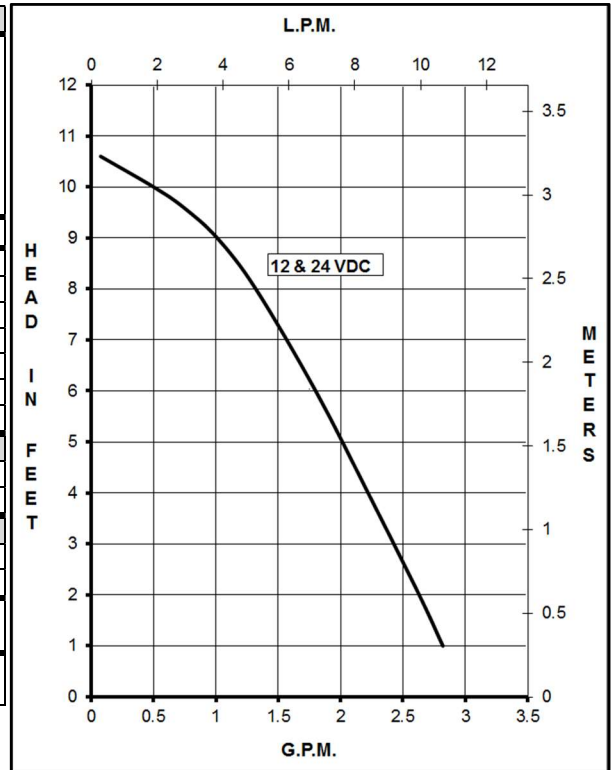
Model 893-11 (12 VDC) starts at 5.5 V ± 0.5 V and turns off at 17.5 V ± 0.5 V.

Model 893-12 (24 VDC) starts at 8.5 V ± 0.5 V and turns off at 28 V ± 0.5 V.

LIMITED WARRANTY:

March pumps are guaranteed only against defects in workmanship or materials for a period of one year from date of manufacture pumping water. For the complete warranty and to register online go to www.marchpump.com/warranty-registration

SPECIFICATIONS	893-11 (12 VDC)					893-12 (24 VDC)				
Product #	0893-0067-0100					0893-0068-0100				
Max Flow	2.7 gpm - 11 lpm					2.7 gpm - 11 lpm				
Max Head	10.6 ft / 4.5 psi - 3.3 m					10.6 ft / 4.5 psi - 3.3 m				
Inlet - Outlet	3/8" FPT - 3/8" OD					3/8" FPT - 3/8" OD				
Max Internal Pressure	50 psi - 344 kPa					50 psi - 344 kPa				
Max Liquid Temperature	190 °F (87 °C)					190 °F (87 °C)				
Packed Weight	1.0 lbs / 0.45 kg					1.0 lbs / 0.45 kg				
Motor Leads	19"-20" (51 cm)					19"-20" (51 cm)				
ELECTRICAL	A	W	Hp	kW	Rpm	A	W	Hp	kW	Rpm
12 V	.85	10	1/150	0.004	4000					
24 V						0.5	12	1/150	0.004	4000
Overall Size	Height	Width	Length	Height	Width	Length	Height	Width	Length	Height
	2.96"	1.85"	5.25"	2.96"	1.85"	5.25"	7.5 cm	4.6 cm	13.3 cm	7.5 cm
Materials in Contact With Solution	Noryl, Polypropylene, Carbon/Teflon, Buna N, 316 Stainless Steel									
All specifications & data are based on pumping water & are intended as a guideline only. Specifications may vary with different motors.										



#	893-11 (12 VDC)			#	893-12 (24 VDC)		
A	0115-0062-1000	4	#7-19 x 1-7/16" Lg. Self-Tapping Screws (Stainless)	A	0115-0062-1000	4	#7-19 x 1-7/16" Lg. Self-Tapping Screws (Stainless)
B	0893-0004-1000	1	3/8" FPT Inlet Cover (Noryl)	B	0893-0004-1000	1	3/8" FPT Inlet Cover (Noryl)
C	0115-0018-1000	2	1/16" CS x 1-7/16" OD "O" Ring (Buna N)	C	0115-0018-1000	2	1/16" CS x 1-7/16" OD "O" Ring (Buna N)
D	0115-0119-1000	1	Encapsulated Impeller (Polypropylene)	D	0115-0119-1000	1	Encapsulated Impeller (Polypropylene)
E	0115-0032-1000	1	Shaft (316 Stainless)	E	0115-0032-1000	1	Shaft (316 Stainless)
F	0115-0033-1000	1	Rear Thrust Washer (Carbon/Teflon)	F	0115-0033-1000	1	Rear Thrust Washer (Carbon/Teflon)
G	0893-0003-1000	1	3/8" OD Outlet Rear Housing (Noryl)	G	0893-0003-1000	1	3/8" OD Outlet Rear Housing (Noryl)
H	0115-0101-0100	1	Drive Magnet	H	0115-0101-0100	1	Drive Magnet
I	0893-0066-1000	4	#4-40 x 0.147" Lg. Screws (Stainless)	I	0893-0066-1000	4	#4-40 x 0.147" Lg. Screws (Stainless)
J	0893-0065-0000	1	Motor Bracket (Plastic)	J	0893-0065-0000	1	Motor Bracket (Plastic)
K	0210-0008-1000	1	1/16" CS x 7/16" OD "O" Ring (Viton)	K	0210-0008-1000	1	1/16" CS x 7/16" OD "O" Ring (Viton)
L	0125-0110-1000	1	Plug (Plastic)	L	0125-0110-1000	1	Plug (Plastic)
M	0893-0062-1000	1	Motor (Paragon) 12 VDC Brushless	M	0893-0063-1000	1	Motor (Paragon) 24 VDC Brushless

NOTE: Contact Factory for other materials and/or parts not listed.

0893-0037-1200