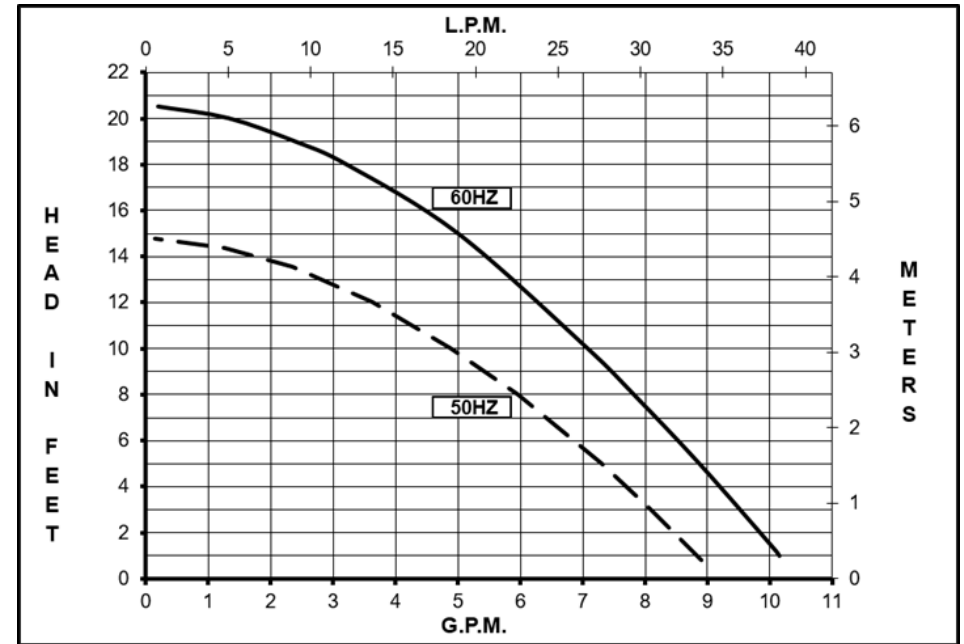
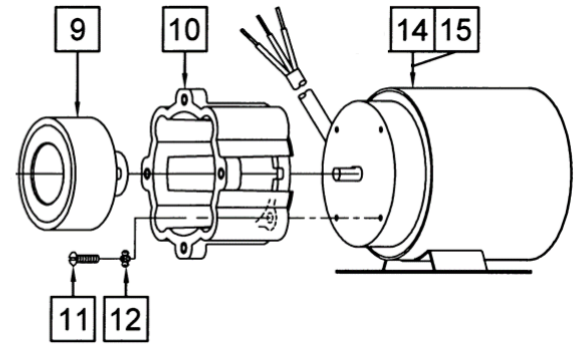
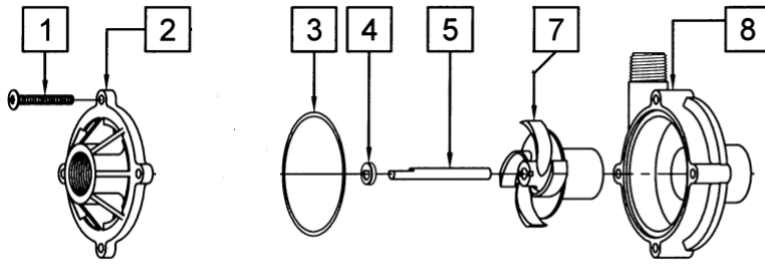




ELECTRICAL: Motors are available in two electrical configurations, 115 Volt 50/60 Hz or 230 Volt 50/60 Hz. The motors are not dual voltage. The motors are U.L. listed and rated as continuous duty.



| | 60Hz | | | | | | | | | | 50Hz | | | | | | | | | |
|---|----------|------|----------|-----|------|------------|------------|--------------|------|------|----------|-----|----------|-----|-----|------------|------------|------------|------|------|
| | Max Flow | | Max Head | | | Electrical | | | | | Max Flow | | Max Head | | | Electrical | | | | |
| Model | GPM | LPM | FT | PSI | M | Ph | Voltage | AMPS | HP | kW | GPM | LPM | Feet | PSI | M | Ph | Voltage | AMPS | HP | kW |
| BC-3K-MD | 10 | 37.8 | 20.5 | 8.9 | 6.25 | 1 | 115 or 230 | 1.58 or 0.68 | 1/10 | 0.07 | 8.7 | 33 | 14.7 | 6.4 | 4.5 | 1 | 115 or 230 | 1.5 or 0.6 | 1/10 | 0.07 |
| All specifications & data are based on pumping water & are intended as a guideline only. Specifications may vary with different motors. | | | | | | | | | | | | | | | | | | | | |



NOTE: When attaching the Drive Magnet to the motor shaft, position the face of the Drive Magnet 3/32 inch below the face of the Motor Bracket.

BC-3KMD

| | | | |
|----|----------------|---|---|
| 1 | 0823-0008-1000 | 4 | #10 Screw x 1-1/2" Long Screw (Stainless) |
| 2 | 0130-0111-1000 | 1 | Cover with 3/4" FPT Inlet (Kynar) |
| 3 | 0130-0033-1000 | 1 | 3/32" CS x 2-13/16" OD "O" Ring (Viton) |
| 4 | 0130-0028-1000 | 1 | Thrust Washer (Ceramic) |
| 5 | 0130-0024-1000 | 1 | Shaft (Ceramic) |
| 7 | 0130-0112-0200 | 1 | Encapsulated Impeller (Kynar) |
| 8 | 0130-0110-1000 | 1 | Rear Housing with 1/2" MPT Outlet (Kynar) |
| 9 | 0130-0043-0200 | 1 | Drive Magnet |
| 10 | 0130-0066-0100 | 1 | Motor Bracket (Plastic) |
| 11 | 0618-0027-1000 | 4 | #8-32 x 5/8" Long Screw (Stainless) |
| 12 | 0140-0014-1000 | 4 | #8 Lock Washer (Steel) |
| 14 | 0130-0187-1000 | 1 | BC Motor, 115V, 50/60Hz |
| 15 | 0130-0188-1000 | 1 | BC Motor, 230V, 50/60Hz |

NOTE: Contact Factory for other materials and/or parts not listed.

Special voltage motors are available upon special order.

Materials in Contact with Solution: Carbon Filled Kynar, Ceramic, Viton

WARRANTY: <https://www.marchpump.com/about/warranty/>

For the General Installation Manual, see this link <https://www.marchpump.com/wp-content/uploads/2019/07/march-pump-general-installation-guide-0750-040.pdf>

Or Scan QR Code



0130-0200-1100