



# MARCH PUMPS

1819 PICKWICK AVE., GLENVIEW, IL 60026-1306, U.S.A  
 PHONE: (847) 729-5300 - FAX: (847) 729-7062  
 WWW.MARCHPUMP.COM

**DESCRIPTION:** Series 8 are centrifugal magnetic drive pumps, eliminating the need for a shaft seal. Pumps are serviceable with an adjustable wrench. Screws should be tightened in sequence & uniformly. Do not over tighten the screws or you may crush the plastic housing bosses. See the parts list for a breakdown of parts.

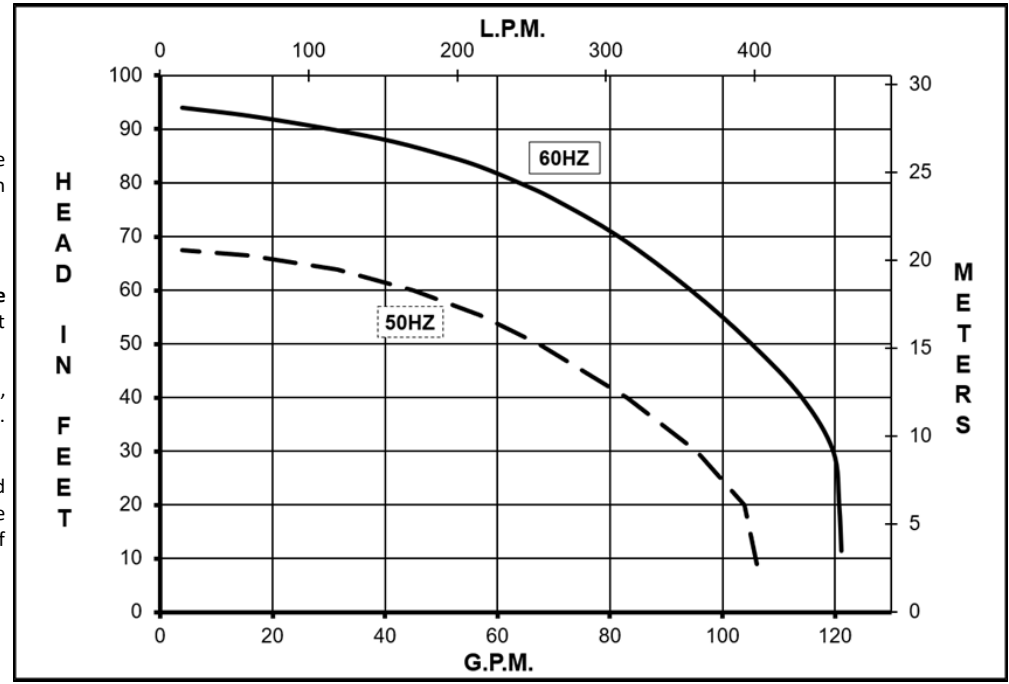
**MODEL ABBREVIATIONS :** C: Polypropylene, K: Kynar

**OPERATION:** Pumps are not self-priming, lack a suction lift, and thus require a **flooded suction**. Pumps **cannot be run dry** because the impeller requires the liquid being pumped for lubrication. For application assistance, contact March Pump.

**ELECTRICAL:** TE-8-MD pumps are dual voltage 230/460, 3 phase 60 Hz and dual voltage 190/380, 3 phase 50 Hz, TEFC. Motors are totally enclosed fan cooled and are U.L. listed as well as rated for continuous operation. All motors have a conduit box for electrical connections.

**ASSEMBLY & DISASSEMBLY:** When replacing impeller bushings in the field, the plastic bushings must be bored to size after they have been pressed into the impeller. Bore to 0.630/0.632 I.D. The carbon & ceramic bushings are to finished size and do not require boring. When attaching the drive magnet to the motor shaft, position the face of the drive magnet 3/8 inch below the face of the motor bracket

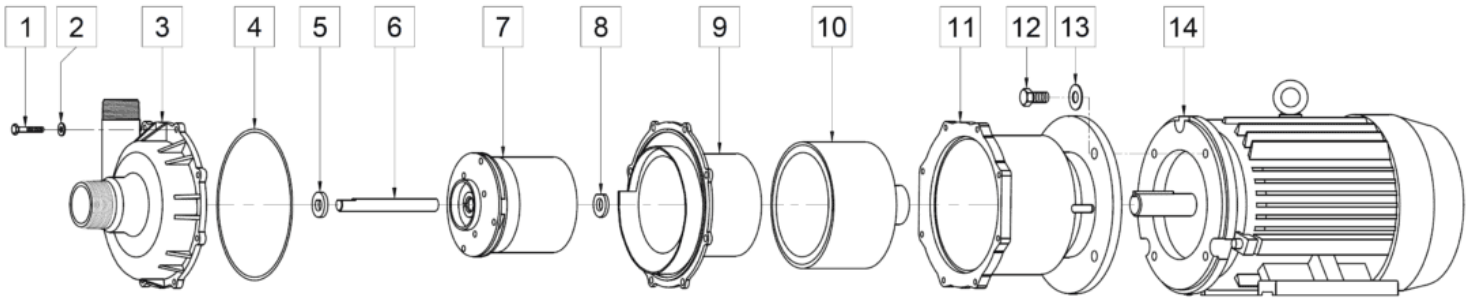
## TE-8C-MD,TE-8K-MD



Specifications		TE-8C-MD	TE-8K-MD
Product	3Ph 3HP	0157-0008-0100	0157-0008-0200
	3Ph 5HP	0157-0008-0700	0157-0008-0800
Inlet-Outlet		2" MPT-1.5" FPT	2" MPT-1.5" FPT
Max Internal Pressure		50PSI (344 kPa)	75PSI (517 kPa)
Max Liquid Temperature		190F (87C)	200F (93C)

Model	60Hz												50Hz												Packed Weight Pounds
	Max Flow		Max Head			Electrical							Max Flow		Max Head			Electrical							
	GPM	LPM	FT	PSI	M	Ph	V	A	HP	kW	RPM	GPM	LPM	Feet	PSI	M	Ph	V	A	HP	kW	RPM			
TE-8C-MD	120	454	95	41.2	29	3	230/460	7.8/3.9	3	2.2	3450	105	400	65.6	28.4	20	3	380	4.3	3	2.2	2850	142		
TE-8C-MD	120	454	95	41.2	29	3	230/460	11.8/5.9	5	3.7	3450	105	400	65.6	28.4	20	3	380	7.14	5	3.7	2850	142		
TE-8K-MD	120	454	95	41.2	29	3	230/460	7.8/3.9	3	2.2	3450	105	400	65.6	28.4	20	3	380	4.3	3	2.2	2850	143		
TE-8K-MD	120	454	95	41.2	29	3	230/460	11.8/5.9	5	3.7	3450	105	400	65.6	28.4	20	3	380	7.14	5	3.7	2850	143		

All specifications & data are based on pumping water & are intended as a guideline only. Specifications may vary with different motors.



TE-8C-MD				TE-8K-MD			
Item	Part Number	QTY REQ	Description	Item	Part Number	QTY REQ	Description
1	0157-0014-1000	8	1/4"-20 x 1" LG. Screw (Stainless)	1	0157-0014-1000	8	1/4"-20 x 1" LG. Screw (Stainless)
2	0157-0023-1000	8	1/4" ID x 5/8" OD Washer (Stainless)	2	0157-0023-1000	8	1/4" ID x 5/8" OD Washer (Stainless)
3	0157-0007-1000	1	Pump Housing, 2"MPT x 1.5"MPT (Polypropylene)	3	0157-0052-1000	1	Pump Housing, 2"MPT x 1.5"MPT (Glass Filled Kynar)
4	0157-0011-1000	1	0.157" CS x 7.244" ID "O" Ring (Viton)	4	0157-0011-1000	1	0.157" CS x 7.244" ID "O" Ring (Viton)
5	0157-0001-1000	1	Front Thrust Washer (Ceramic)	5	0157-0001-1000	1	Front Thrust Washer (Ceramic)
6	0157-0002-1000	1	Shaft (Ceramic)	6	0157-0002-1000	1	Shaft (Ceramic)
7	0157-0004-0200	1	Impeller with Ryton/Teflon/Carbon Bushing (Polypropylene)	7	0157-0050-0500	1	Impeller with Carbon Bushing (Glass Filled Kynar)
8	0157-0009-1000	1	Rear Thrust Washer (Ceramic)	8	0157-0009-1000	1	Rear Thrust Washer (Ceramic)
9	0157-0006-1000	1	Rear Housing (Carbon Filled Polypropylene)	9	0157-0053-1000	1	Rear Housing (Glass Filled Kynar)
10	0157-0005-0100	1	Drive Magnet	10	0157-0005-0100	1	Drive Magnet
11	0157-0008-0010	1	Motor Bracket (Metal)	11	0157-0008-0010	1	Motor Bracket (Metal)
12	0160-0031-1000	4	1/2"-13 x 1" Lg. Screw (Stainless)	12	0160-0031-1000	4	1/2"-13 x 1" Lg. Screw (Stainless)
13	0160-0032-1000	4	1/2"ID x 1-1-1/4"OD Washer (Stainless)	13	0160-0032-1000	4	1/2"ID x 1-1-1/4"OD Washer (Stainless)
14A	0157-0012-1000	1	TEFC Motor, 3HP, 230/460V, 3 Phase, 50/60Hz	14A	0157-0012-1000	1	TEFC Motor, 3HP, 230/460V, 3 Phase, 50/60Hz
14B	0157-0065-1000	1	TEFC Motor, 5HP, 230/460V, 3 Phase, 50/60Hz	14B	0157-0065-1000	1	TEFC Motor, 5HP, 230/460V, 3 Phase, 50/60Hz
W	0157-0085-0100	1	Wet End Kit: (Items 1,2,3,4,5,6,7,8,9)	W	0157-0086-0100	1	Wet End Kit: (Items 1,2,3,4,5,6,7,8,9)

NOTE: Contact Factory for other materials and/or parts not listed.

Special voltage motors are available upon special order.

**Materials in contact with the liquid: TE-8C-MD:** Polypropylene, Carbon Filled Polypropylene, Ryton/Teflon/Carbon, Ceramic, Viton

**TE-8K-MD:** Glass Filled Kynar, Carbon, Ceramic, Viton

**LIMITED WARRANTY:** March pumps are guaranteed only against defects in workmanship or materials for a period of one year from date of manufacture pumping water. For the complete warranty and to register online go to [www.marchpump.com/warranty-registration](http://www.marchpump.com/warranty-registration)

0157-0021-1000-R-Rev24