



# MARCH PUMPS

1819 PICKWICK AVE., GLENVIEW, IL 60026-1306, U.S.A  
 PHONE: (847) 729-5300 - FAX: (847) 729-7062  
 WWW.MARCHPUMP.COM

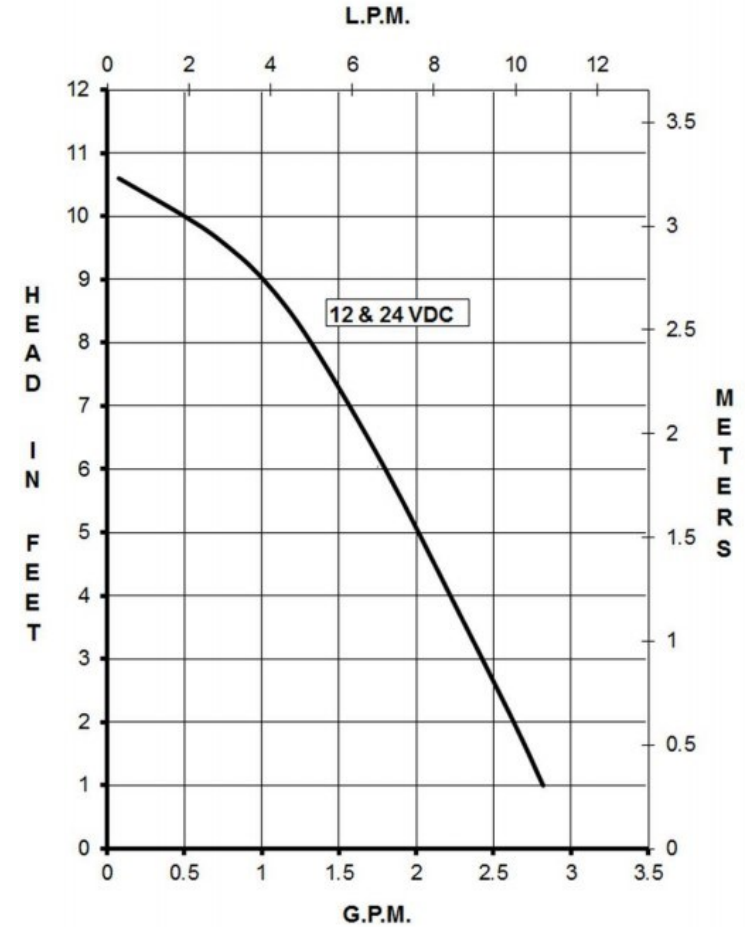
## 893-08 & 893-10

**DESCRIPTION & OPERATION:** Series 893 are centrifugal magnetic drive pumps, eliminating the need for a shaft seal. Pumps can be serviced with a screwdriver. The 893-08 is an open air pump, and the 893-10 can be used submerged or in the open air. A flooded suction is essential for operation since the pump is not self-priming. Pumps cannot be run dry because the impeller requires the liquid being pumped for lubrication. For application assistance, contact March Pump.

**ELECTRICAL:** The Brushless Motor has a restricted voltage range. It must be run within 12V to 28V.

Red lead is positive, black lead is negative.

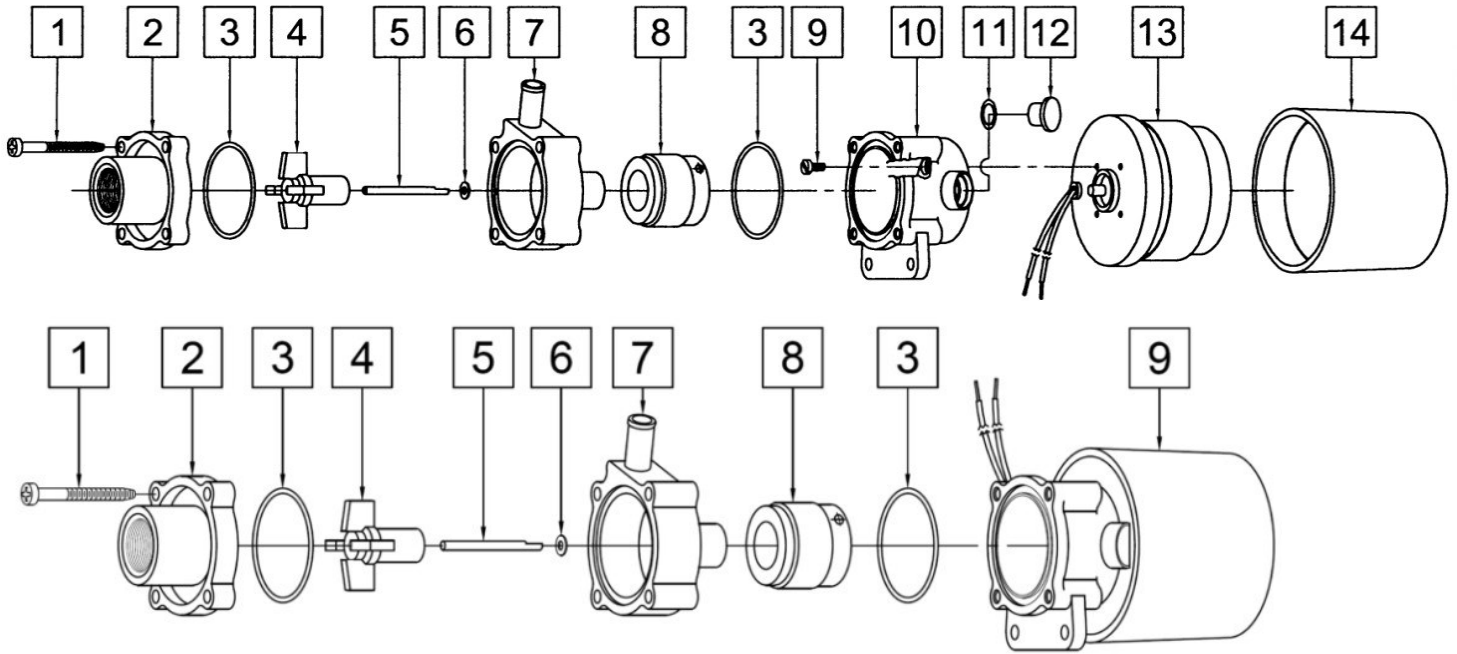
The motor has a 16" (40cm) motor lead.



Specifications		893-08 (24V DC)	893-10(24V DC)
Product	P/N	0893-0031-0100	0893-0031-0200
Inlet-Outlet		3/8" FPT-3/8" OD	3/8" FPT-3/8" OD
Max Internal Pressure		50PSI (344 kPa)	50PSI (344 kPa)
Max Liquid Temperature	Submerged	Not Applicable	130F (54C)
Max Liquid Temperature	Open Air	190F (87C)	190F (87C)

Model	Max Flow		Max Head			Electrical					Packed Weight
	GPM	LPM	FT	PSI	M	Voltage	Amps	HP	kW	RPM	Pounds
893-08	2.7	11	10.6	4.5	3.3	24	0.5	1/150	0.004	4000	1.5
893-10	2.7	11	10.6	4.5	3.3	24	0.5	1/150	0.004	4000	1.5

All specifications & data are based on pumping water & are intended as a guideline only. Specifications may vary with different motors.



**NOTE**

893-08 (Open Air)				893-10 (Open Air and Submersible)			
Item	Part Number	QTY REQ	Description	Item	Part Number	QTY REQ	Description
1	0115-0062-1000	4	#7-19 x 1-7/16" Long Self-Tapping Screw (Stainless)	1	0115-0062-1000	4	#7-19 x 1-7/16" Long Self-Tapping Screw (Stainless)
2	0893-0004-1000	1	3/8" FPT Inlet Cover (Noryl)	2	0893-0004-1000	1	3/8" FPT Inlet Cover (Noryl)
3	0115-0018-1000	2	1/16" CS x 1-7/16" OD "O" Ring (Buna N)	3	0115-0018-1000	2	1/16" CS x 1-7/16" OD "O" Ring (Buna N)
4	0115-0008-0100	1	Impeller (Nylon/Ceramic Magnet)	4	0115-0008-0100	1	Impeller (Nylon/Ceramic Magnet)
5	0115-0032-1000	1	Shaft (316 Stainless)	5	0115-0032-1000	1	Shaft (316 Stainless)
6	0115-0033-1000	1	Rear Thrust Washer (Carbon/Teflon)	6	0115-0033-1000	1	Rear Thrust Washer (Carbon/Teflon)
7	0893-0003-1000	1	3/8" OD Outlet Rear Housing (Noryl)	7	0893-0003-1000	1	3/8" OD Outlet Rear Housing (Noryl)
8	0115-0101-0100	1	Drive Magnet	8	0115-0101-0100	1	Drive Magnet
9	0893-0029-1000	4	0.118" x 0.5" x 0.236" Long Screw (Stainless)	9	NA	NA	Encapsulated 24V DC Brushless Motor (EBM Papst)
10	0893-0035-0000	1	Motor Bracket (Plastic)				<b>Materials in contact with the liquid when the pump is used in open air:</b> Noryl, Carbon/Teflon, Buna N, 316 Stainless Steel, Ceramic Magnet,  <b>Materials in contact with the liquid when submerged:</b> Noryl, Carbon/Teflon, Buna N, 316 Stainless Steel, Ceramic Magnet, Epoxy, Delrin, Viton, Motor Leads
11	0210-0008-1000	1	1/16" CS x 7/16" OD O-Ring (Viton)				
12	0125-0110-1000	1	Plug (Plastic)				
13	0893-0027-1000	1	24V DC Brushless Motor (EBM Papst)				
14	0893-0036-1000	1	Cover (Plastic) OPTIONAL				

NOTE: Contact Factory for other materials and/or parts not listed.

Special voltage motors are available upon special order.

**LIMITED WARRANTY:** March pumps are guaranteed only against defects in workmanship or materials for a period of one year from date of manufacture pumping water.

For the complete warranty and to register online go to [www.marchpump.com/warranty-registration](http://www.marchpump.com/warranty-registration)