



MARCH PUMPS

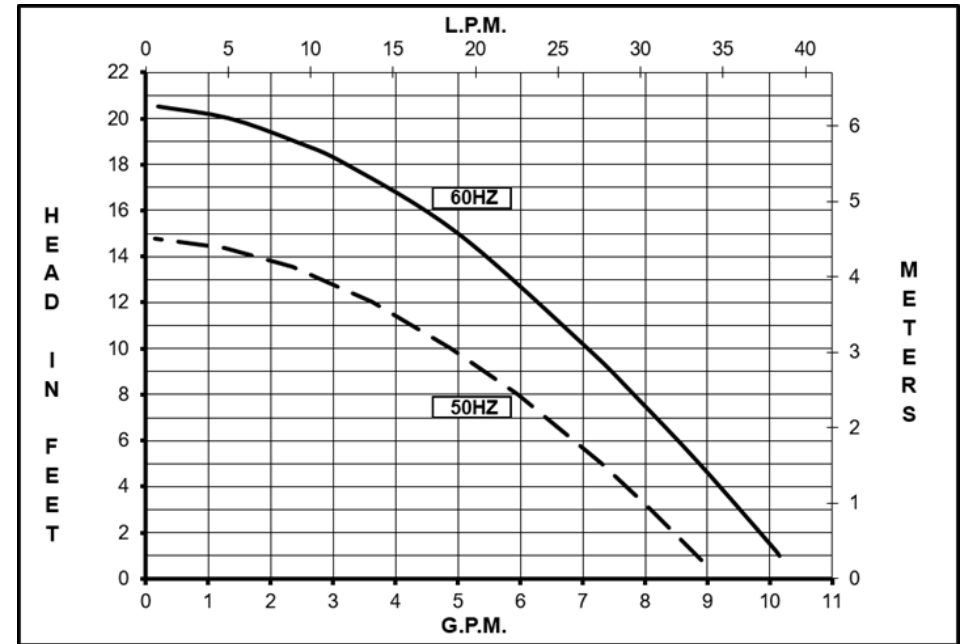
1819 PICKWICK AVE., GLENVIEW, IL 60026-1306, U.S.A
 PHONE: (847) 729-5300 - FAX: (847) 729-7062
 WWW.MARCHPUMP.COM

DESCRIPTION: Series 3 are centrifugal magnetic drive pumps, eliminating the need for a shaft seal. Pumps are serviceable with a screwdriver. See the parts list for a breakdown of parts.

OPERATION: Pumps are not self-priming, lack a suction lift, and thus require a **flooded suction**. Pumps **cannot be run dry** because the impeller requires the liquid being pumped for lubrication. For liquids with a specific gravity greater than water, have a higher viscosity, or for elevated temperatures, a trimmed impeller may be necessary. For application assistance, contact March Pump.

ELECTRICAL: Motors are available in different electrical configurations such as 115 Volt 60 Hz, 115 Volt 50/60 Hz, or 230 Volt 50/60 Hz, 1 phase. The motors are not dual voltage. The motors are U.L. listed and rated as continuous duty.

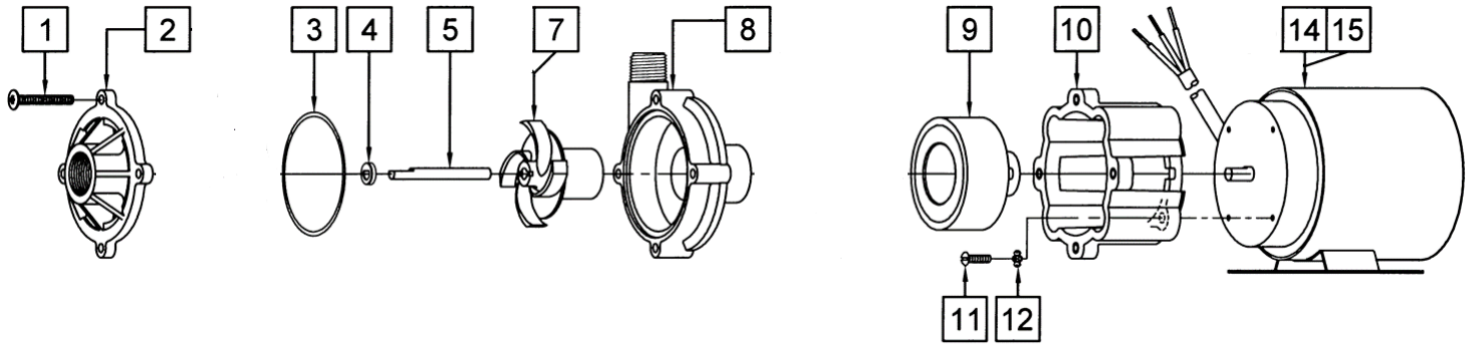
BC-3K-MD



Specifications		BC-3K-MD
Product	115V	0130-0138-0100
	230V	0130-0138-0200
Inlet-Outlet		3/4" FPT- 1/2" MPT
Max Internal Pressure		75PSI (517 kPa)
Max Liquid Temperature		200F/93C

Model	60Hz											50Hz										
	Max Flow		Max Head			Electrical						Max Flow		Max Head			Electrical					
	GPM	LPM	FT	PSI	M	Ph	Voltage	AMPS	HP	KW	RPM	GPM	LPM	Feet	PSI	M	Ph	Voltage	AMPS	HP	KW	RPM
BC-3K-MD	10	37.8	20.5	8.9	6.25	1	115 or 230	2.1 or 1	1/14 or 1/15	0.05 or 0.04	3450	8.7	33	14.7	6.4	4.5	1	115 or 230	2.4 or 1.1	1/14 or 1/15	0.05 or 0.04	2850

All specifications & data are based on pumping water & are intended as a guideline only. Specifications may vary with different motors.



NOTE: When attaching the Drive Magnet to the motor shaft, position the face of the Drive Magnet 3/32 inch below the face of the Motor Bracket.

BC-3KMD

1	0823-0008-1000	4	#10 Screw x 1-1/2" Long Screw (Stainless)
2	0130-0111-1000	1	Cover with 3/4" FPT Inlet (Kynar)
3	0130-0033-1000	1	3/32" CS x 2-13/16" OD "O" Ring (Viton)
4	0130-0028-1000	1	Thrust Washer (Ceramic)
5	0130-0024-1000	1	Shaft (Ceramic)
7	0130-0112-0200	1	Encapsulated Impeller (Kynar)
8	0130-0110-1000	1	Rear Housing with 1/2" MPT Outlet (Kynar)
9	0130-0043-0200	1	Drive Magnet
10	0130-0066-0100	1	Motor Bracket (Plastic)
11	0618-0027-1000	4	#8-32 x 5/8" Long Screw (Stainless)
12	0140-0014-1000	4	#8 Lock Washer (Steel)
14	0130-0140-1200	1	BC Motor, 115V, 50/60Hz
15	0130-0049-1200	1	BC Motor, 230V, 50/60Hz

NOTE: Contact Factory for other materials and/or parts not listed.

Special voltage motors are available upon special order.

Materials in Contact with Solution: Carbon Filled Kynar, Ceramic, Viton

LIMITED WARRANTY: March pumps are guaranteed only against defects in workmanship or materials for a period of one year from date of manufacture pumping water. For the complete warranty and to register online go to www.marchpump.com/warranty-registration

For the General Installation Manual, see this link <https://www.marchpump.com/wp-content/uploads/2019/07/march-pump-general-installation-guide-0750-040.pdf>

Or Scan QR Code



Rev 0130-0032-1100-R3