



MARCH PUMPS

1819 PICKWICK AVE., GLENVIEW, IL 60026-1306, U.S.A
 PHONE: (847) 729-5300 - FAX: (847) 729-7062
 WWW.MARCHPUMP.COM

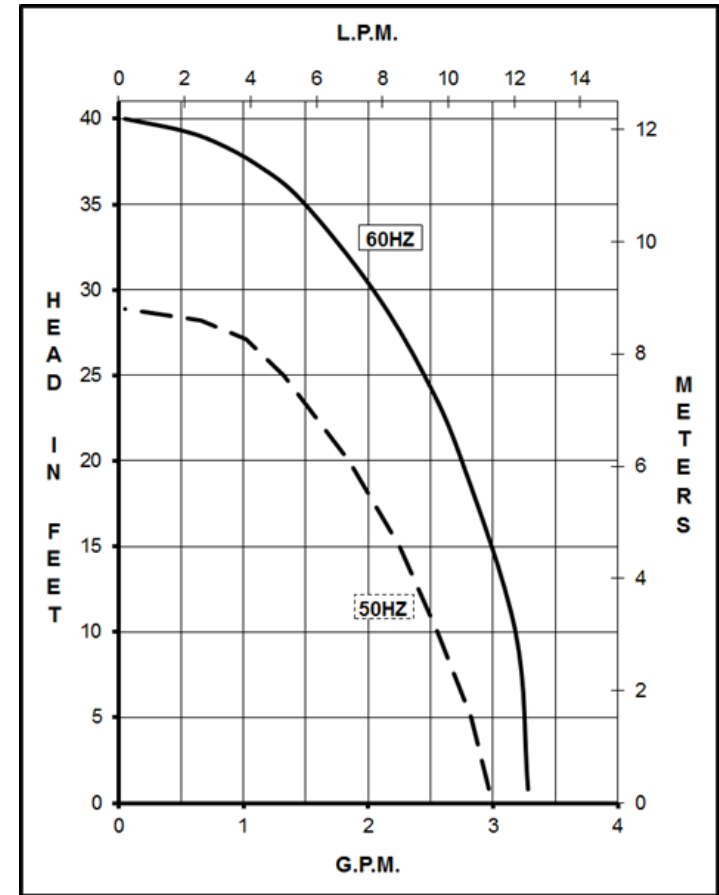
DESCRIPTION: Series 320 pumps are centrifugal magnetic drive pumps, eliminating the need for a shaft seal. Pumps are serviceable with a screwdriver. See the parts list for a breakdown of parts.

Model Abbreviations: A: Smooth Inlet/Outlet, C: Threaded Inlet/Outlet

OPERATION: Pumps are not self-priming, lack a suction lift, and thus require a **flooded suction**. Pumps **cannot be run dry** because the impeller requires the liquid being pumped for lubrication. The direction of motor rotation should be clockwise when facing the inlet of the pump. For liquids with a specific gravity greater than water, have a higher viscosity, or for elevated temperatures, a trimmed impeller may be necessary. For application assistance, contact March Pump.

ELECTRICAL: Motors are available in different electrical configurations such as 115 V 50/60 Hz, or 230 V 50/60 Hz, 1 Phase and have a 3 foot (0.9 m) cord. Motors are U.L. listed and are rated for continuous operation.

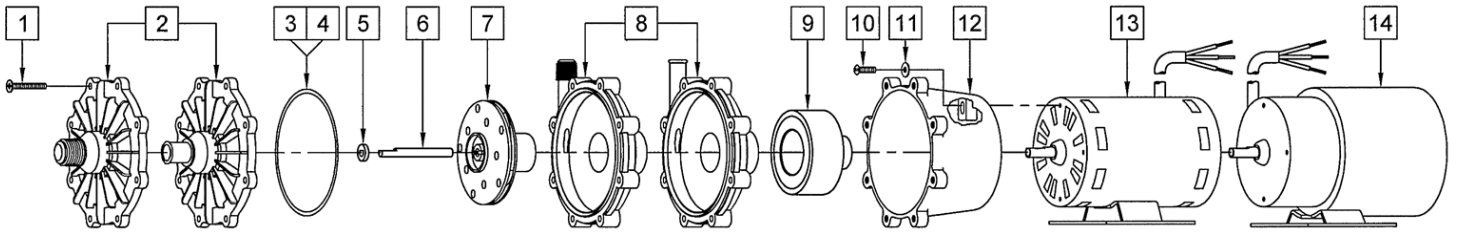
320-AP-MD & 320-CP-MD



Specifications		320-AP	320-CP
Product	115V	0320-0001-0100	0320-0001-0300
	230V	0320-0001-0600	0320-0001-0800
Inlet-Outlet		5/8"OD-1/2"OD	1/2"MPT-3/8"MPT
Max Internal Pressure		50PSI (344 kPa)	50PSI (344 kPa)
Max Liquid Temperature		190F (87C)	190F (87C)

Model	60Hz												50Hz										Packed Weight Pounds
	Max Flow		Max Head			Electrical							Max Flow		Max Head			Electrical					
	GPM	LPM	FT	PSI	M	Ph	V	A	HP	kW	RPM	GPM	LPM	Feet	PSI	M	Ph	V	A	HP	kW	RPM	
320-AP-MD	3.3	12.5	40	17.3	12.2	1	115 or 230	1.75 or 0.75	1/12	0.062	3450	2.99	11.3	28.9	12.5	8.8	1	115 or 230	1.75 or 0.75	1/12	0.062	2850	7.90
320-CP-MD	3.3	12.5	40	17.3	12.2	1	115 or 230	1.75 or 0.75	1/12	0.062	3450	2.99	11.3	28.9	12.5	8.8	1	115 or 230	1.75 or 0.75	1/12	0.062	2850	7.95

All specifications & data are based on pumping water & are intended as a guideline only. Specifications may vary with different motors.



NOTE: When attaching the drive magnet to the motor shaft, position the face of the Drive Magnet 1/8 inch below the face of the motor bracket.

320-AP-MD				320-CP-MD			
Item	Part Number	QTY REQ	Description	Item	Part Number	QTY REQ	Description
1	0320-0008-1000	8	#8-32 x 1-1/4" Lg Screw (Stainless)	1	0320-0008-1000	8	#8-32 x 1-1/4" Lg Screw (Stainless)
2	0320-0003-100	1	Cover with 5/8" OD Inlet (Polypropylene)	2	0320-0011-1000	1	Cover with 1/2" MPT Inlet (Polypropylene)
3	0320-0006-1000	1	0.118" CS x 3.622" ID O Ring (Viton)	3	0320-0006-1000	1	0.118" CS x 3.622" ID O Ring (Viton)
5	0130-0028-1000	1	Thrust Washer (Ceramic)	5	0130-0028-1000	1	Thrust Washer (Ceramic)
6	0130-0024-1000	1	Shaft (Ceramic)	6	0130-0024-1000	1	Shaft (Ceramic)
7	0320-0004-0300	1	Impeller (Polypropylene)	7	0320-0004-0300	1	Impeller (Polypropylene)
8	0320-0002-0100	1	Rear Housing with 1/2" OD Smooth Outlet and thrust washer (Polypropylene)	8	0320-0010-0100		Rear Housing with 3/8" MPT Outlet and thrust washer (Polypropylene)
9	0130-0043-0200	1	Drive Magnet	9	0130-0043-0200	1	Drive Magnet
10	0618-0027-1000	4	#8-32 x 5/8" Lg. Screw (Stainless)	10	0618-0027-1000	4	#8-32 x 5/8" Lg. Screw (Stainless)
11	0135-0016-1000	4	#8 Washer (Stainless)	11	0135-0016-1000	4	#8 Washer (Stainless)
12	0320-0007-0100	1	Motor Bracket (Plastic)	12	0320-0007-0100	1	Motor Bracket (Plastic)
13	0145-0012-1000	1	Motor 115V, 50/60Hz	13	0145-0012-1000	1	Motor 115V, 50/60Hz
14	0145-0036-1000	1	Motor 230V, 50/60Hz	14	0145-0036-1000	1	Motor 230V, 50/60Hz

NOTE: Contact Factory for other materials and/or parts not listed.

Special voltage motors are available upon special order.

Materials in contact with the liquid: 320-AP-MD and 320-CP-MD: Polypropylene, Viton, Ceramic

LIMITED WARRANTY: March pumps are guaranteed only against defects in workmanship or materials for a period of one year from date of manufacture pumping water. For the complete warranty and to register online go to www.marchpump.com/warranty-registration