



# MARCH PUMPS

1819 PICKWICK AVE., GLENVIEW, IL 60026-1306, U.S.A  
 PHONE: (847) 729-5300 - FAX: (847) 729-7062  
 WWW.MARCHPUMP.COM

## DESCRIPTION:

Series 6 are centrifugal magnetic drive pumps, eliminating the need for a shaft seal. Pumps can be serviced with an adjustable wrench. See the back page for a breakdown of parts.

## OPERATION:

Pumps are not self-priming, lack a suction lift, and thus require a **flooded suction**. Pumps **cannot be run dry** because the impeller requires the liquid being pumped for lubrication. The direction of motor rotation should be clockwise when facing the inlet of the pump. For liquids with a specific gravity greater than water, have a higher viscosity, or for elevated temperatures, a trimmed impeller may be necessary. For application assistance, contact March Pump.

## ELECTRICAL:

TE-6-MD pumps are 115/230 Volt, 50/60 Hz, 1 phase or 230/460 Volt, 50/60 Hz, 3 phase. Motors are totally enclosed fan cooled and have a conduit box.. Motors are U.L. listed as well as rated for continuous operation.

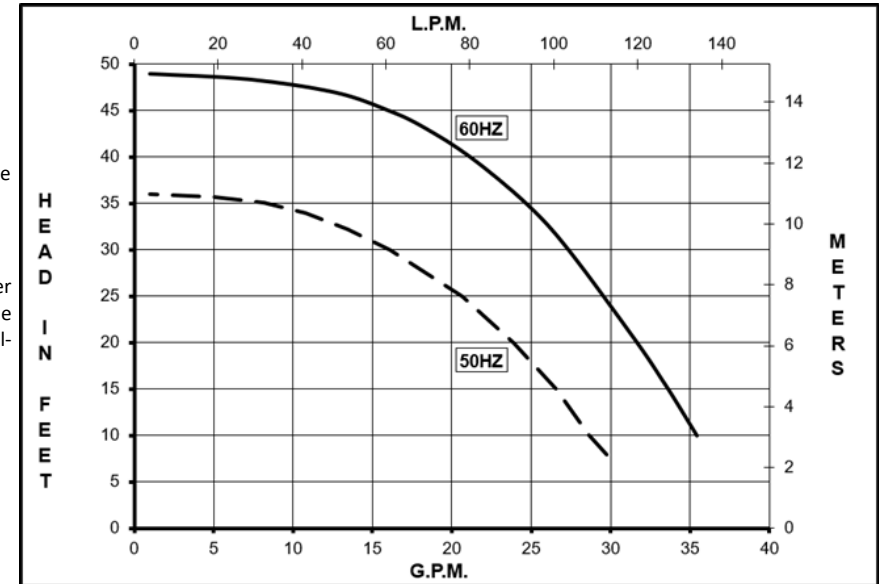
Note: The P/N's and packed weight below are with the metal motor bracket.

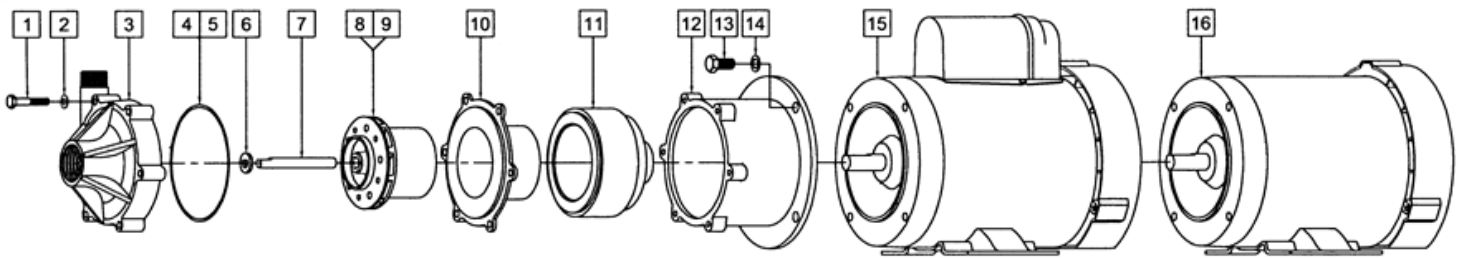
| Specifications         |         | TE-6T-MD          | TE-6K-MD          | TE-6P-MD          |
|------------------------|---------|-------------------|-------------------|-------------------|
| Product                | 1 Phase | 0153-0002-0200    | 0153-0002-0400    | 0153-0095-0100    |
|                        | 3 Phase | 0153-0002-0300    | 0153-0002-0500    | 0153-0095-0200    |
| Inlet-Outlet           |         | 1" FPT - 3/4" MPT | 1" FPT - 3/4" MPT | 1" FPT - 3/4" MPT |
| Max Internal Pressure  |         | 50 psi (344 kPa)  | 75 psi (517 kPa)  | 50 psi (344 kPa)  |
| Max Liquid Temperature |         | 190F (87C)        | 200F (93C)        | 190F (87C)        |

| Model    | 60Hz     |     |          |      |      |            |         |         |     |       |      | 50Hz     |       |          |      |    |            |         |         |     |       |      | Packed Weight<br>Pounds |
|----------|----------|-----|----------|------|------|------------|---------|---------|-----|-------|------|----------|-------|----------|------|----|------------|---------|---------|-----|-------|------|-------------------------|
|          | Max Flow |     | Max Head |      |      | Electrical |         |         |     |       |      | Max Flow |       | Max Head |      |    | Electrical |         |         |     |       |      |                         |
|          | GPM      | LPM | FT       | PSI  | M    | Ph         | V       | A       | HP  | kW    | RPM  | GPM      | LPM   | Feet     | PSI  | M  | Ph         | V       | A       | HP  | kW    | RPM  |                         |
| TE-6T-MD | 38       | 144 | 49       | 21.2 | 14.9 | 1          | 115/230 | 7.4/3.7 | 1/2 | 0.373 | 3450 | 30       | 113.5 | 36       | 15.6 | 11 | 1          | 115/230 | 8.4/4.2 | 3/8 | 0.280 | 2850 | 28.85                   |
| TE-6T-MD | 38       | 144 | 49       | 21.2 | 14.9 | 3          | 230/460 | 1.5/0.7 | 1/2 | 0.373 | 3450 | 30       | 113.5 | 36       | 15.6 | 11 | 3          | 230/460 | 1.7/0.8 | 1/2 | 0.373 | 2850 | 28.20                   |
| TE-6K-MD | 38       | 144 | 49       | 21.2 | 14.9 | 1          | 115/230 | 7.4/3.7 | 1/2 | 0.373 | 3450 | 30       | 113.5 | 36       | 15.6 | 11 | 1          | 115/230 | 8.4/4.2 | 3/8 | 0.280 | 2850 | 28.60                   |
| TE-6K-MD | 38       | 144 | 49       | 21.2 | 14.9 | 3          | 230/460 | 1.5/0.7 | 1/2 | 0.373 | 3450 | 30       | 113.5 | 36       | 15.6 | 11 | 3          | 230/460 | 1.7/0.8 | 1/2 | 0.373 | 2850 | 27.95                   |
| TE-6P-MD | 38       | 144 | 49       | 21.2 | 14.9 | 1          | 115/230 | 7.4/3.7 | 1/2 | 0.373 | 3450 | 30       | 113.5 | 36       | 15.6 | 11 | 1          | 115/230 | 8.4/4.2 | 3/8 | 0.280 | 2850 | 28.85                   |
| TE-6P-MD | 38       | 144 | 49       | 21.2 | 14.9 | 3          | 230/460 | 1.5/0.7 | 1/2 | 0.373 | 3450 | 30       | 113.5 | 36       | 15.6 | 11 | 3          | 230/460 | 1.7/0.8 | 1/2 | 0.373 | 2850 | 28.2                    |

All specifications & data are based on pumping water & are intended as a guideline only. Specifications may vary with different motors.

## TE-6T-MD, TE-6K-MD, TE-6P-MD





Note: When attaching the Drive Magnet to the motor shaft, position the face of the Drive Magnet 3/32 inch below the face of the Motor Bracket.

| TE-6TMD  |                |         |  | TE-6K-MD  |   |         |  |
|----------|----------------|---------|--|---|---|---------|--|
| Item     | Part Number    | QTY REQ | Description  | Item  | Part Number   | QTY REQ | Description                                  |
| 1        | 0153-0064-1000 | 6       | 1/4"-20 x 1-3/4" Lg. Screw (Stainless)                 | 1   | 0153-0064-1000  | 6       | 1/4"-20 x 1-3/4" Lg. Screw (Stainless)       |
| 2        | 0155-0021-1000 | 6       | 1/4" ID x 1/2" OD Washer (Stainless)                   | 2   | 0155-0021-1000  | 6       | 1/4" ID x 1/2" OD Washer (Stainless)         |
| 3        | 0153-0002-1000 | 1       | Front Housing (Ryton)                                  | 3   | 0153-0042-1000  | 1       | Front Housing (Kynar)                        |
| 5        | 0153-0015-1000 | 1       | 3/32" CS x 4-7/16" 5 OD "O" Ring (Viton)               | 5   | 0153-0015-1000  | 1       | 3/32" CS x 4-7/16" 5 OD "O" Ring (Viton)     |
| 7        | 0155-0009-1000 | 1       | Thrust Washer (Ceramic)                                | 7   | 0155-0009-1000  | 1       | Thrust Washer (Ceramic)                      |
| 8        | 0153-0007-1000 | 1       | Shaft (Ceramic)  | 8   | 0153-0007-1000  | 1       | Shaft (Ceramic)                              |
| 9        | 0153-0003-0400 | 1       | Impeller w Ryton/Teflon/Carbon Bushing (Polypropylene) | 9   | 0153-0043-0500  | 1       | Impeller with Carbon Bushing (Kynar)         |
| 10       | 0153-0005-0100 | 1       | Rear Housing w/Ceramic Thrust Washer (Ryton)           | 10  | 0153-0041-0100  | 1       | Rear Housing w/Ceramic Thrust Washer (Kynar) |
| 11       | 0153-0035-0100 | 1       | Drive Magnet   | 11  | 0153-0035-0100  | 1       | Drive Magnet                                 |
| 12A      | 0153-0093-0010 | 1       | Motor Bracket (Aluminum) (Standard)                    | 12A   | 0153-0093-0010  | 1       | Motor Bracket (Aluminum) (Standard)          |
| 12B      | 0153-0001-0100 | 1       | Motor Bracket (Ryton) (Option)                         | 12B   | 0153-0001-0100  | 1       | Motor Bracket (Ryton) (Option)               |
| 13       | 0155-0017-1000 | 4       | 3/8"-16 x 3/4" Lg. Screw (Stainless)                   | 13  | 0155-0017-1000  | 4       | 3/8"-16 x 3/4" Lg. Screw (Stainless)         |
| 14       | 0155-0019-1000 | 4       | 3/8" ID x 5/8" OD Washer (Stainless)                   | 14  | 0155-0019-1000  | 4       | 3/8" ID x 5/8" OD Washer (Stainless)         |
| 15       | 0153-0019-1000 | 1       | 1 Phase Motor  | 15  | 0153-0019-1000  | 1       | 1 Phase Motor                                |
| 16       | 0153-0020-1000 | 1       | 3 Phase Motor  | 16  | 0153-0020-1000  | 1       | 3 Phase Motor                                |
| W        | 0153-0056-0100 | 1       | Wet End Kit (Items: 1,2,3,5,6,8,9,10)                  | W   | 0153-0057-0100  | 1       | Wet End Kit (Items: 1,2,3,5,6,8,9,10)        |
| TE-6P-MD |                |         |  |   |   |         |  |
| 1        | 0153-0064-1000 | 6       | 1/4"-20 x 1-3/4" Lg. Screw (Stainless)                 | Materials in contact with the solution  |   |         |  |
| 2        | 0155-0021-1000 | 6       | 1/4" ID x 1/2" OD Washer (Stainless)                   |   |   |         |  |
| 3        | 0153-0052-1000 | 1       | Front Housing (Polypropylene)                          | TE-6T-MD  | Polypropylene, Ryton, Ryton/Teflon/Carbon, Ceramic, Viton |         |  |
| 5        | 0153-0015-1000 | 1       | 3/32" CS x 4-7/16" 5 OD "O" Ring (Viton)               | TE-6K-MD  | Kynar, Carbon, Ceramic, Viton                             |         |  |
| 7        | 0155-0009-1000 | 1       | Thrust Washer (Ceramic)                                | TE-6P-MD  | Polypropylene, Ryton/Teflon/Carbon, Ceramic, Viton        |         |  |
| 8        | 0153-0007-1000 | 1       | Shaft (Ceramic)  | <p><b>LIMITED WARRANTY:</b> March pumps are guaranteed only against defects in workmanship or materials for a period of one year from date of manufacture pumping water. For the complete warranty and to register online go to <a href="http://www.marchpump.com/warranty-registration">www.marchpump.com/warranty-registration</a></p> <p>NOTE: Contact Factory for other materials and/or parts not listed.</p> <p>When replacing impeller bushings in the field, the plastic bushings must be bored to size after they have been pressed into the impeller. Bore to 0.379/0.381 inches I.D. The carbon and ceramic bushings are to finished size and do not require boring after assembly. When attaching the Drive Magnet to the motor shaft, position the face of the Drive Magnet 3/32 inch below the face of the Motor Bracket.</p> <p>Explosion proof and special voltage motors are available upon special order.</p> |   |         |  |
| 9        | 0153-0003-0400 | 1       | Impeller w Ryton/Teflon/Carbon Bushing (Polypropylene) |   |   |         |  |
| 10       | 0153-0072-0100 | 1       | Rear Housing w/Ceramic Thrust Washer (Polypropylene)   |   |   |         |  |
| 11       | 0153-0035-0100 | 1       | Drive Magnet   |   |   |         |  |
| 12A      | 0153-0093-0010 | 1       | Motor Bracket (Aluminum) (Standard)                    |   |   |         |  |
| 12B      | 0153-0001-0100 | 1       | Motor Bracket (Ryton) (Option)                         |   |   |         |  |
| 13       | 0155-0017-1000 | 4       | 3/8"-16 x 3/4" Lg. Screw (Stainless)                   |   |   |         |  |
| 14       | 0155-0019-1000 | 4       | 3/8" ID x 5/8" OD Washer (Stainless)                   |   |   |         |  |
| 15       | 0153-0019-1000 | 1       | 1 Phase Motor  |   |   |         |  |
| 16       | 0153-0020-1000 | 1       | 3 Phase Motor  |   |   |         |  |
| W        | 0153-0096-0100 | 1       | Wet End Kit (Items: 1,2,3,5,6,8,9,10)                  | 0153-0018-1000-B-Rev 30   |   |         |  |