



# MARCH PUMPS

1819 PICKWICK AVE., GLENVIEW, IL 60026-1306, U.S.A  
 PHONE: (847) 729-5300 - FAX: (847) 729-7062  
 WWW.MARCHPUMP.COM

## DESCRIPTION:

The [TE-5S-MD](#) is a centrifugal magnetic drive pump, eliminating the need for a shaft seal. It is serviceable with a screwdriver.

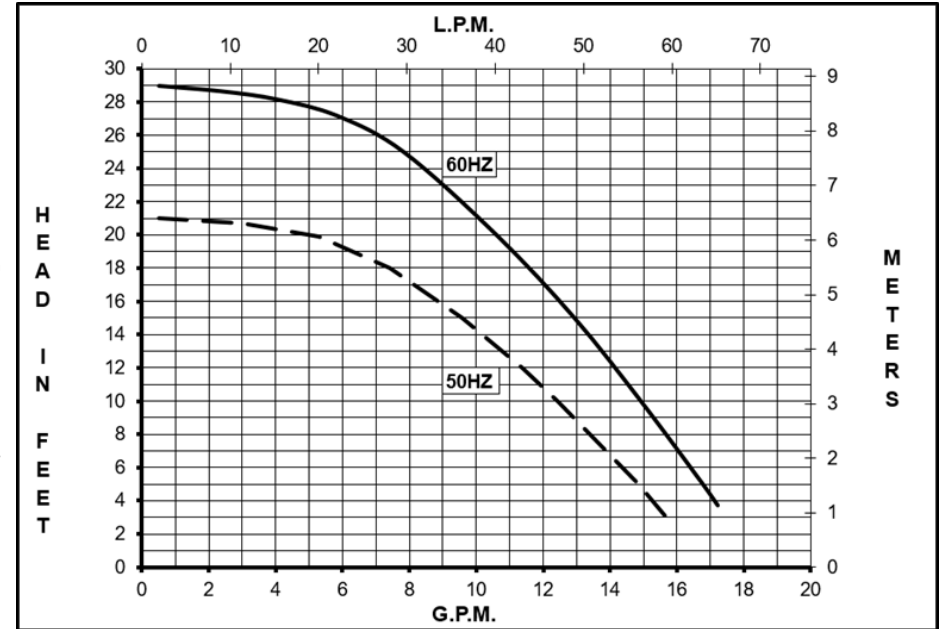
## OPERATION:

Pumps are not self-priming, lack a suction lift, and thus require a **flooded suction**. Pumps **cannot be run dry** because the impeller requires the liquid being pumped for lubrication. For liquids with a specific gravity greater than water, have a higher viscosity, or for elevated temperatures, a trimmed impeller may be necessary. For application assistance, contact March Pump.

## ELECTRICAL:

TE-5S-MD motor are dual voltage, 1 phase 115/230 Volt, 60 Hz, 115/220V, 50Hz, or 3 phase 230/460 Volt, 60/50 Hz. Motors are totally enclosed fan cooled, rated for continuous duty, have a conduit box for electrical connections, and neither is rated for variable speed.

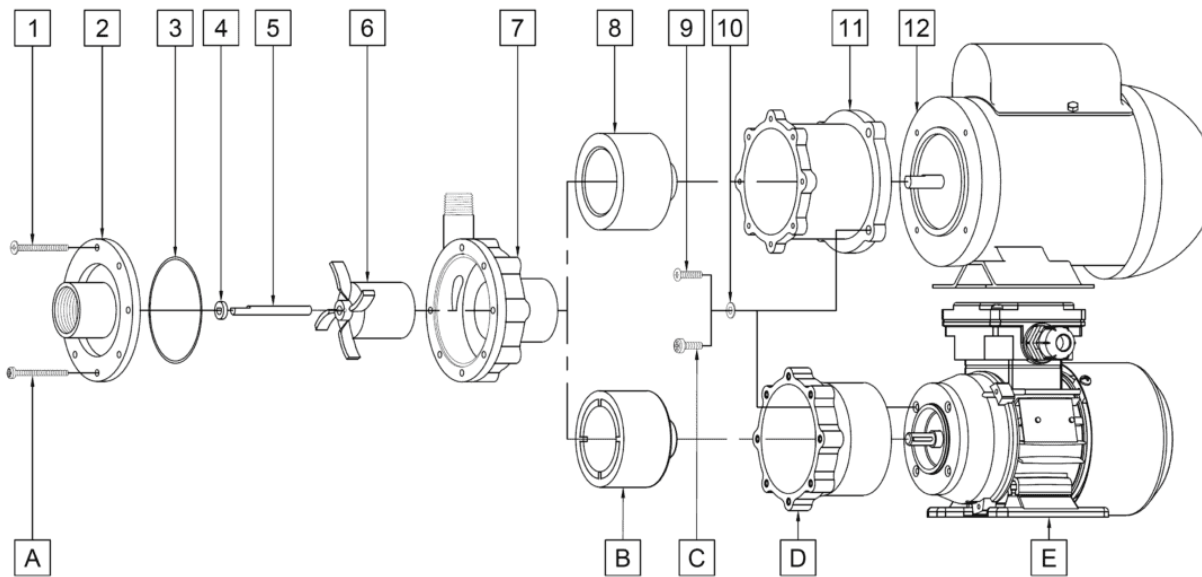
## TE-5S-MD 1&3 Phase



Specifications		TE-5SMD
Product	1Ph	0150-0214-0300
	3Ph	0150-0220-0300
Inlet-Outlet		1" FPT-1/2" MPT
Max Internal Pressure		200PSI (1378 kPa)
Max Liquid Temperature		250F (121C)

Model	60Hz												50Hz												Packed Weight Pounds
	Max Flow		Max Head			Electrical							Max Flow		Max Head			Electrical							
	GPM	LPM	FT	PSI	M	Ph	V	A	HP	kW	RPM	GPM	LPM	Feet	PSI	M	Ph	V	A	HP	kW	RPM			
TE-5SMD	18	68.1	29	12.6	8.85	1	115/230	2.6/1.3	1/5	0.149	3450	15.9	60.5	20.7	8.96	6.3	1	115/220	2.4/1.2	1/5	0.149	2850	22		
TE-5S-MD	18	68.1	29	12.6	8.85	3	230/460	0.7/0.35	0.17	0.12	3450	15.9	60.5	20.7	8.96	6.3	3	230/460	2.4/1.2	0.17	0.12	2850	16		

All specifications & data are based on pumping water & are intended as a guideline only. Specifications may vary with different motors.



**NOTE:** When attaching the Drive Magnet to the motor shaft, position the face of the Drive Magnet 3/32 inch below the face of the Motor Bracket.

TE-5S-MD 1 Ph				TE-5S-MD 3 Ph			
Item	Part Number	QTY REQ	Description	Item	Part Number	QTY REQ	Description
1	0150-0021-1000	7	#8-32 x 1-3/4 LG Screw (Stainless)	A	0150-0221-1000	7	M4 x 1.77" Long Screw (Stainless)
2	0150-0111-0010	1	Cover with 1" FPT Inlet (316 Stainless)	2	0150-0111-0010	1	Cover with 1" FPT Inlet (316 Stainless)
3	0750-0986-1000	1	0.078 CS x 2.834 ID O-Ring (Viton)	3	0750-0986-1000	1	0.078 CS x 2.834 ID O-Ring (Viton)
4	0130-0028-1000	1	Thrust Washer (Ceramic)	4	0130-0028-1000	1	Thrust Washer (Ceramic)
5	0130-0024-1000	1	Shaft (Ceramic)	5	0130-0024-1000	1	Shaft (Ceramic)
6	0150-0114-0400	1	Impeller with Carbon Bushing (316 Stainless)	6	0150-0114-0400	1	Impeller with Carbon Bushing (316 Stainless)
7	0150-0110-0010	1	Rear Housing with 1/2" MPT Outlet and Ceramic Thrust Washer (316 Stainless)	7	0150-0110-0010	1	Rear Housing with 1/2" MPT Outlet and Ceramic Thrust Washer (316 Stainless)
8	0150-0176-0300	1	Drive Magnet with 0.375 Inch Bore	B	0150-0178-0200	1	Drive Magnet with 9MM Bore
9	0150-0050-1000	4	#10-32 x 3/4 LG. Screw (Stainless)	C	0150-0222-1000	4	M5 x .62" Long Screw (Stainless)
10	0150-0051-1000	4	#10 Washer (Stainless)	10	0150-0051-1000	4	#10 Washer (Stainless)
11	0150-0070-0100	1	NEMA Motor Bracket (Plastic)	D	0150-0177-1000	1	IEC Motor Bracket (Plastic)
12	0150-0213-1000	1	Motor (Weg), TEFC, 115/230V, 50/60Hz	E	0150-0218-1000	1	Motor, TEFC, IEC, 3 Phase, 230/460V, 50/60 Hz
W	0150-0148-0200	1	Wet End Kit: Items (1,3,4,5,6,7,9)				

Materials in contact with the liquid: 316 Stainless Steel, Carbon, Viton, Ceramic.

NOTE: Contact Factory for other materials and/or parts not listed.

Special voltage motors are available upon special order.

**LIMITED WARRANTY:** March pumps are guaranteed only against defects in workmanship or materials for a period of one year from date of manufacture pumping water. For the complete warranty and to register online go to [www.marchpump.com/warranty-registration](http://www.marchpump.com/warranty-registration)