



MARCH PUMPS

1819 PICKWICK AVE., GLENVIEW, IL 60026-1306, U.S.A
 PHONE: (847) 729-5300 - FAX: (847) 729-7062
 WWW.MARCHPUMP.COM

DESCRIPTION:

Series MDXT are centrifugal magnetic drive pumps, eliminating the need for a shaft seal. Pumps are serviceable with a screwdriver.

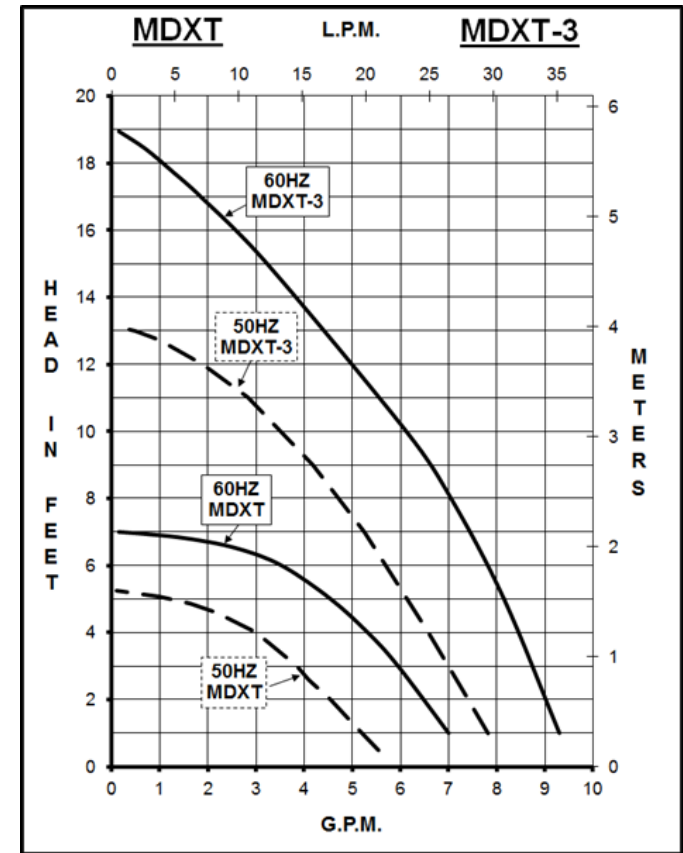
OPERATION:

Pumps are not self-priming, lack a suction lift, and thus require a **flooded suction**. Pumps **cannot be run dry** because the impeller requires the liquid being pumped for lubrication. For application assistance, contact March Pump.

ELECTRICAL:

All models have air cooled motors that are U.L. listed and are rated for continuous duty. Motors have a 3 foot (0.9 m) cord. Air cooled motors are separate voltage 115 Volt 60 Hz, 115 Volt 50/60 Hz, or 230 Volt 50/60 Hz. Motors are not dual voltage.

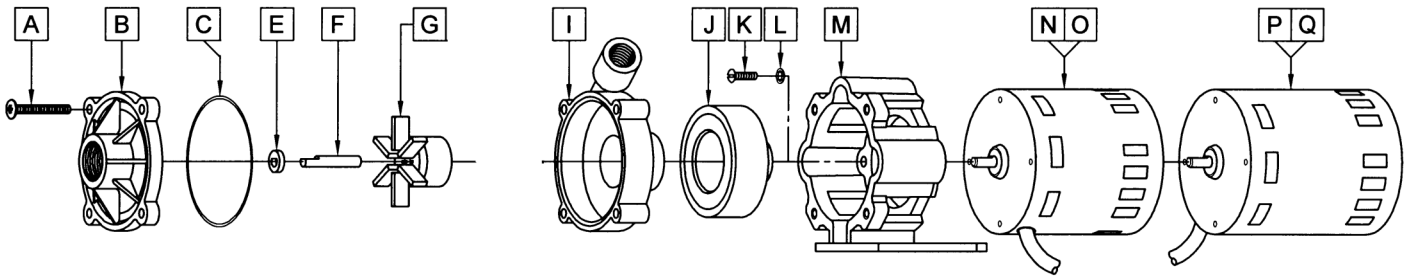
MDXT, MDXT-3



Specifications		MDXT	MDXT-3
Product	115V	0135-0174-0100	0135-0174-0300
	230V	0135-0174-0200	0135-0174-0400
Inlet-Outlet		1/2" FPT-3/8" FPT	1/2" FPT-3/8" FPT
Max Internal Pressure		50PSI (344 kPa)	50PSI (344 kPa)
Max Liquid Temperature		190F (87C)	190F (87C)

Model	60Hz											50Hz											Packed Weight Pounds
	Max Flow		Max Head			Electrical						Max Flow		Max Head			Electrical						
	GPM	LPM	FT	PSI	M	Ph	V	A	HP	kW	RPM	GPM	LPM	Feet	PSI	M	Ph	V	A	HP	kW	RPM	
MDXT	7	26.5	7	3	2.1	1	115/230	.94/.45	1/55, 1/40	.014/.019	1750	5.8	22	5.2	2.3	1.6	1	230	.5	1/40	.019	1300	5.2
MDXT-3	8.5	32.2	19	8.2	5.8	1	115/230	1.55/.7	1/25	.029	3450	7.9	30	13.1	5.7	4	1	11/230	1.55/.7	1/25	.029	2850	5.25

All specifications & data are based on pumping water & are intended as a guideline only. Specifications may vary with different motors.



NOTE: When attaching the Drive Magnet to the motor shaft, position the face of the Drive Magnet 1/16 inch below the face of the Motor Bracket.

MDXT				MDXT-3			
Item	Part Number	QTY REQ	Description	Item	Part Number	QTY REQ	Description
A	0823-0008-1000	4	#10-32 x 1-1/2 Lg. Screw (Stainless)	A	0823-0008-1000	4	#10-32 x 1-1/2 Lg. Screw (Stainless)
B	0135-0172-1000	1	Cover with 1/2" FPT Inlet (Polypropylene)	B	0135-0172-1000	1	Cover with 1/2" FPT Inlet (Polypropylene)
C	0135-0039-1000	1	O-Ring 1/16 CS x 2-7/8 OD (Buna N)	C	0135-0039-1000	1	O-Ring 1/16 CS x 2-7/8 OD (Buna N)
E	0130-0128-1000	1	Thrust Washer (Ceramic)	E	0130-0128-1000	1	Thrust Washer (Ceramic)
F	0809-0160-1000	1	Shaft (Ceramic)	F	0809-0160-1000	1	Shaft (Ceramic)
G	0135-0026-0100	1	2.625" Impeller with Bare Ceramic Magnet (Polypropylene)	G	0135-0043-1000	1	2.062" Impeller with Bare Ceramic Magnet (Polypropylene)
I	0135-0171-1000	1	Rear Housing with 3/8" FPT Outlet (Polypropylene)	I	0135-0171-1000	1	Rear Housing with 3/8" FPT Outlet (Polypropylene)
J	0135-0126-0100	1	Drive Magnet	J	0135-0126-0100	1	Drive Magnet
K	0618-0027-1000	4	Screw #8-32 x 5/8 Lg. (Stainless Steel)	K	0618-0027-1000	4	Screw #8-32 x 5/8 Lg. (Stainless Steel)
L	0620-0010-1000	4	Lock Washer # (8stainless Steel)	L	0620-0010-1000	4	Lock Washer # (8stainless Steel)
M	0135-0168-0100	1	Motor Bracket (Plastic)	M	0135-0168-0100	1	Motor Bracket (Plastic)
N	0135-0109-1000	1	Motor, 1750RPM, 115V, 60Hz	P	0135-0036-1000	1	Motor, 3450RPM, 115V, 50/60Hz
O	0135-0112-1000	1	Motor 1750RPM, 230V, 50/60Hz	Q	0135-0037-1000	1	Motor, 3450RPM, 230V, 50/60Hz

NOTE: Contact Factory for other materials and/or parts not listed.

Special voltage motors are available upon special order.

Materials in contact with the liquid: Polypropylene, Ceramic Magnet, Buna N, Ceramic

LIMITED WARRANTY: March pumps are guaranteed only against defects in workmanship or materials for a period of one year from date of manufacture pumping water. For the complete warranty and to register online go to www.marchpump.com/warranty-registration