



MARCH PUMPS

1819 PICKWICK AVE., GLENVIEW, IL 60026-1306, U.S.A
 PHONE: (847) 729-5300 - FAX: (847) 729-7062
 WWW.MARCHPUMP.COM

DESCRIPTION:

The LC-3CP-MD is a centrifugal magnetic drive pump, eliminating the need for a shaft seal. Pumps are serviceable with a screwdriver. The "LC" is hermetically encapsulated and liquid cooled which allows the pump to be run fully submerged or in open air for complete moisture protection.

OPERATION:

Pumps are not self-priming, lack a suction lift, and thus require a **flooded suction**. Pumps **cannot be run dry** because the impeller requires the liquid being pumped for lubrication. For liquids with a specific gravity greater than water, have a higher viscosity, or for elevated temperatures, a trimmed impeller may be necessary. For application assistance, contact March Pump.

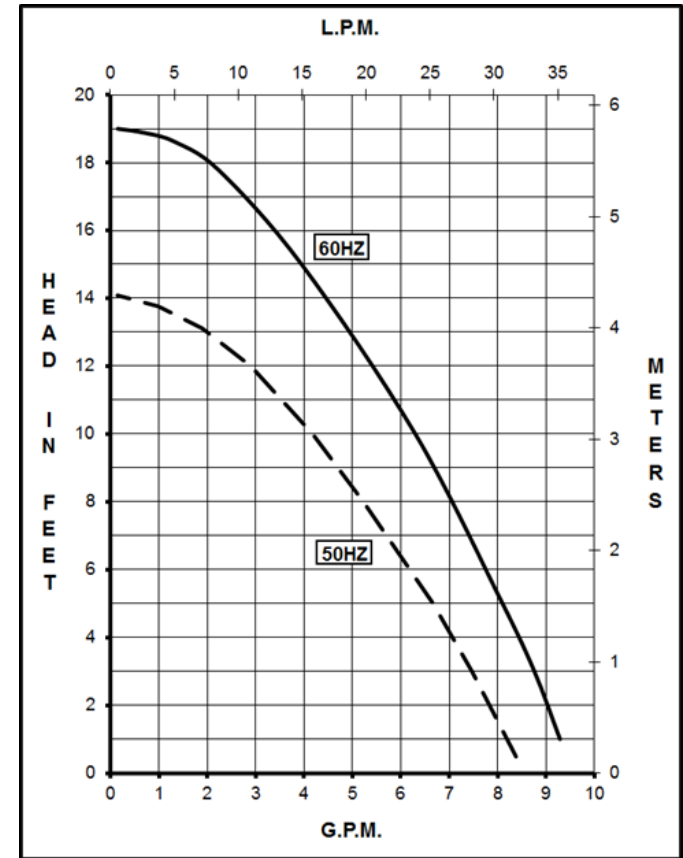
ELECTRICAL:

Motors are available in different electrical configurations such as 1 Phase 115 Volt 50/60 Hz or 230 Volt 50/60 Hz. The motors are not dual voltage. The motors are U.L. listed and rated as continuous duty. Models have a 6 foot (1.8 m) cord.

Carbon Bushing: This pump can be equipped with a carbon bushing, which will help to protect the pump if run dry.

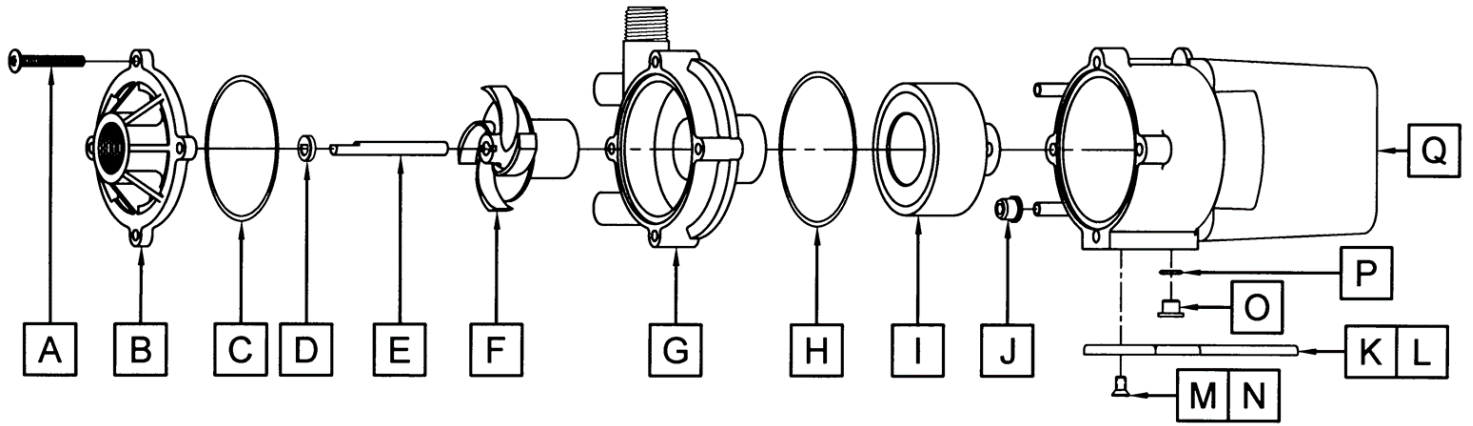
Specifications		LC-3CP-MD	LC-3CP-MD with Carbon Bushing
Product	115V	0130-0158-0200	0130-0158-0230
	230V	0130-0159-0200	0130-0159-0230
Inlet-Outlet		3/4" FPT-1/2" MPT	3/4" FPT-1/2" MPT
Max Internal Pressure		25PSI (172kPa)	25PSI (172kPa)
Max Liquid Temperature		130F (54C)	130F (54C)

LC-3CP-MD



Model	60Hz												50Hz												Packed Weight Pounds
	Max Flow		Max Head			Electrical							Max Flow		Max Head			Electrical							
	GPM	LPM	Feet	PSI	M	Ph	Voltage	Amperage	HP	kW	RPM	GPM	LPM	Feet	PSI	M	Ph	Voltage	Amperage	HP	kW	RPM			
LC-3CP-MD	8.5	32.2	19	8.2	5.8	1	115 or 230	2.0 or 1.0	1/20	0.037	3450	8.2	31	14.1	6.1	4.3	1	115 or 230	2.3 or 1.0	1/20	0.037	2850	7.95		

All specifications & data are based on pumping water & are intended as a guideline only. Specifications may vary with different motors.



LC-3CP-MD				LC-3CP-MD with Carbon Bushing			
Item	Part Number	QTY REQ	Description	Item	Part Number	QTY REQ	Description
A	0823-0008-1000	4	#10-32 x 1-1/2" Long Screw (Stainless)	A	0823-0008-1000	4	#10-32 x 1-1/2" Long Screw (Stainless)
B	0130-0021-1000	1	Cover with 3/4" FPT (Polypropylene)	B	0130-0021-1000	1	Cover with 3/4" FPT (Polypropylene)
C	0130-0011-1000	1	3/32"CS x 2-13/16"OD "O" Ring (Buna N)	C	0130-0011-1000	1	3/32"CS x 2-13/16"OD "O" Ring (Buna N)
D	0130-0028-1000	1	Thrust Washer (Ceramic)	D	0130-0028-1000	1	Thrust Washer (Ceramic)
E	0130-0024-1000	1	Shaft (Ceramic)	E	0130-0024-1000	1	Shaft (Ceramic)
F	0130-0020-0100	1	Impeller with Bare Ceramic Magnet (Polypropylene)	F	0130-0165-0200	1	Impeller with Bare Ceramic Magnet and Carbon Bushing (Polypropylene)
G	0130-0019-0100	1	Rear Housing with 1/2" MPT & Plug Assembly	G	0130-0019-0100	1	Rear Housing with 1/2" MPT & Plug Assembly
H	0130-0025-1000	1	3/32"CS x 3" OD Bracket "O" Ring (Buna N)	H	0130-0025-1000	1	3/32"CS x 3" OD Bracket "O" Ring (Buna N)
I	0130-0043-0200	1	Drive Magnet	I	0130-0043-0200	1	Drive Magnet
J	0125-0007-1000	2	Cooling Tube Seal (Buna N)	J	0125-0007-1000	2	Cooling Tube Seal (Buna N)
K	0125-0037-1000	1	Mounting Base (Polypropylene)	K	0125-0037-1000	1	Mounting Base (Polypropylene)
L	0125-0113-0100	1	Marine Base w/Grommets (Polypropylene) -Option (Not Shown)	L	0125-0113-0100	1	Marine Base w/Grommets (Polypropylene) -Option (Not Shown)
M	0130-0132-1000	2	Base Screw (Stainless)	M	0130-0132-1000	2	Base Screw (Stainless)
N	0130-0146-100	2	Marine Base Screw (Stainless)-Option (not shown)	N	0130-0146-100	2	Marine Base Screw (Stainless)-Option (not shown)
O	0125-0110-1000	1	Plug for Motor Bracket	O	0125-0110-1000	1	Plug for Motor Bracket
P	0210-0008-1000	1	1/16"CS x 7/16" OD "O" Ring (Viton)	P	0210-0008-1000	1	1/16"CS x 7/16" OD "O" Ring (Viton)
Q	Not Available	1	LC Epoxy Motor, Bracket, Cord Assembly	Q	Not Available	1	LC Epoxy Motor, Bracket, Cord Assembly
W	0130-0115-0200	1	Wet End Kit (A,B,C,D,E,F,G,H, J)	W	0130-0115-0230	1	Wet End Kit (A,B,C,D,E,F,G,H, J)

NOTE: Contact Factory for other materials and/or parts not listed.

Special voltage motors are available upon special order.

Materials in contact with the liquid: LC-3CP-MD: Polypropylene, Cupric Nickel, Buna N, Ceramic, Ceramic Magnet.

When Submerged: Epoxy, Stainless Steel, Ryton, and Cord.

When purchased with a carbon bushing, the carbon bushing is also exposed to the liquid.

LIMITED WARRANTY: March pumps are guaranteed only against defects in workmanship or materials for a period of one year from date of manufacture pumping water. For the complete warranty and to register online go to www.marchpump.com/warranty-registration