



MARCH PUMPS

1819 PICKWICK AVE., GLENVIEW, IL 60026-1306, U.S.A
PHONE: (847) 729-5300 - FAX: (847) 729-7062
WWW.MARCHPUMP.COM

DESCRIPTION & OPERATION:

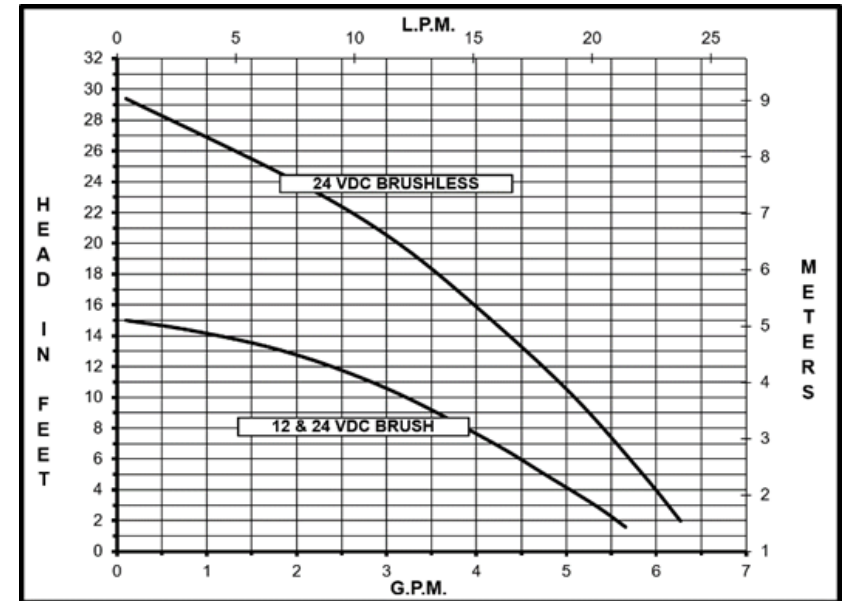
Series 2 are centrifugal magnetic drive pumps, eliminating the need for a shaft seal. Pumps can be serviced with a screwdriver. See the parts list for a breakdown of parts. Pumps are not self-priming, lack a suction lift, and thus require a **flooded suction**. Pumps **cannot be run dry** because the impeller requires the liquid being pumped for lubrication. For liquids with a specific gravity greater than water, have a higher viscosity, or for elevated temperatures, a trimmed impeller may be necessary. Brushless motors must be operated within a restricted voltage range due to the electronics. For application assistance, contact March Pump.

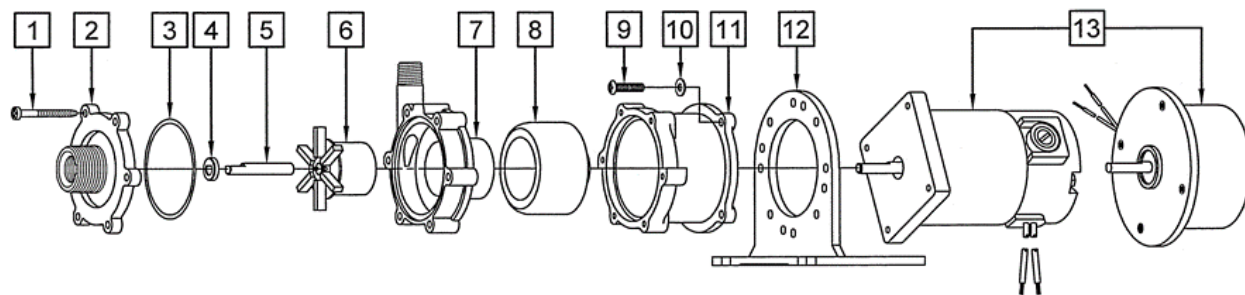
Brushtype Motor : 9" Leads, Red is positive, Black is negative

Brushless Motor: 11.5" Leads, Red is positive, Black is negative. Restricted Voltage Range: 14V-30V

Specifications		BC-2CP-MD Brush Type					BC-2CP-MD Brushless				
Product	12V	0125-0123-0100					Not Available				
	24V	0125-0123-0200					0125-0123-0400				
Inlet-Outlet		3/8" FPT & 3/4" MPT-1/4" MPT					3/8" FPT & 3/4" MPT-1/4" MPT				
Max Internal Pressure		50PSI (344 kPa)					50PSI (344 kPa)				
Max Liquid Temperature		190F (87C)					190F (87C)				
	Max Flow		Max Head			Electrical					Packed Weight
Model	GPM	LPM	FT	PSI	M	Voltage	Amps	HP	kW	RPM	Pounds
BC-2CP-MD Brushtype	6	22.7	15	6.5	4.6	12/24	3.5/1.8	1/25	0.029	3650	4
BC-2CP-MD Brushless	6.2	23.4	29	12.5	8.8	24	2.1	1/25	0.029	3800	4
All specifications & data are based on pumping water & are intended as a guideline only. Specifications may vary with different motors.											

BC-2CP-MD Brush Type and Brushless





NOTE: When attaching the Drive Magnet to the motor shaft, position the face of the Drive Magnet 1/16 inch below the face of the Motor Bracket.

BC-2CP-MD Brushtype

BC-2CP-MD Brushless

Item	Part Number	QTY REQ	Description	Item	Part Number	QTY REQ	Description
1	0115-0062-1000	6	#7-19 x 1-7/16" Long Self-Tapping Screw (Stainless)	1	0115-0062-1000	6	#7-19 x 1-7/16" Long Self-Tapping Screw (Stainless)
2	0125-0056-1000	1	Cover with 3/8" FPT x 3/4" MPT Inlet (Polypropylene)	2	0125-0056-1000	1	Cover with 3/8" FPT x 3/4" MPT Inlet (Polypropylene)
3	0125-0065-1000	1	3/32" CS x 2-3/16" OD "O" Ring (Viton)	3	0125-0065-1000	1	3/32" CS x 2-3/16" OD "O" Ring (Viton)
4	0130-0028-1000	1	Thrust Washer (Ceramic)	4	0130-0028-1000	1	Thrust Washer (Ceramic)
5	0125-0061-1000	1	Shaft (Ceramic)	5	0125-0061-1000	1	Shaft (Ceramic)
6	0125-0087-0200	1	Encapsulated Impeller (Polypropylene)	6	0125-0087-0200	1	Encapsulated Impeller (Polypropylene)
7	0125-0058-1000	1	Rear Housing with 1/4" MPT Outlet (Polypropylene)	7	0125-0058-1000	1	Rear Housing with 1/4" MPT Outlet (Polypropylene)
8	0125-0083-0100	1	0.250" Bore Drive Magnet	11	0125-0083-0200	1	6MM Bore Drive Magnet
9	0210-0036-100	4	#8-32 x 3/4" Lg. Screw (Stainless)	9	0210-0036-100	4	#8-32 x 3/4" Lg. Screw (Stainless)
10	0858-0004-1000	4	#8 Washer (Stainless)	10	0858-0004-1000	4	#8 Washer (Stainless)
11	0125-0069-1000	1	Motor Bracket (Plastic)	11	0125-0069-1000	1	Motor Bracket (Plastic)
12	0125-0106-1000	1	Base (Plastic)	12	0125-0106-1000	1	Base (Plastic)
13A	0809-0101-1000	1	Motor, 12V, DC	13C	0125-0128-1000	1	Motor, 24V, DC
13B	0809-0103-1000	1	Motor, 24V, DC				

NOTE: Contact Factory for other materials and/or parts not listed.

Special voltage motors are available upon special order.

Materials in contact with the liquid: Polypropylene, Viton, Ceramic,

LIMITED WARRANTY: March pumps are guaranteed only against defects in workmanship or materials for a period of one year from date of manufacture pumping water. For the complete warranty and to register online go to www.marchpump.com/warranty-registration