



MARCH PUMPS

1819 PICKWICK AVE., GLENVIEW, IL 60026-1306, U.S.A
 PHONE: (847) 729-5300 - FAX: (847) 729-7062
 WWW.MARCHPUMP.COM

DESCRIPTION:

Series 1 are centrifugal magnetic drive pumps, eliminating the need for a shaft seal. Pumps are serviceable with a screwdriver. See below for a breakdown of parts.

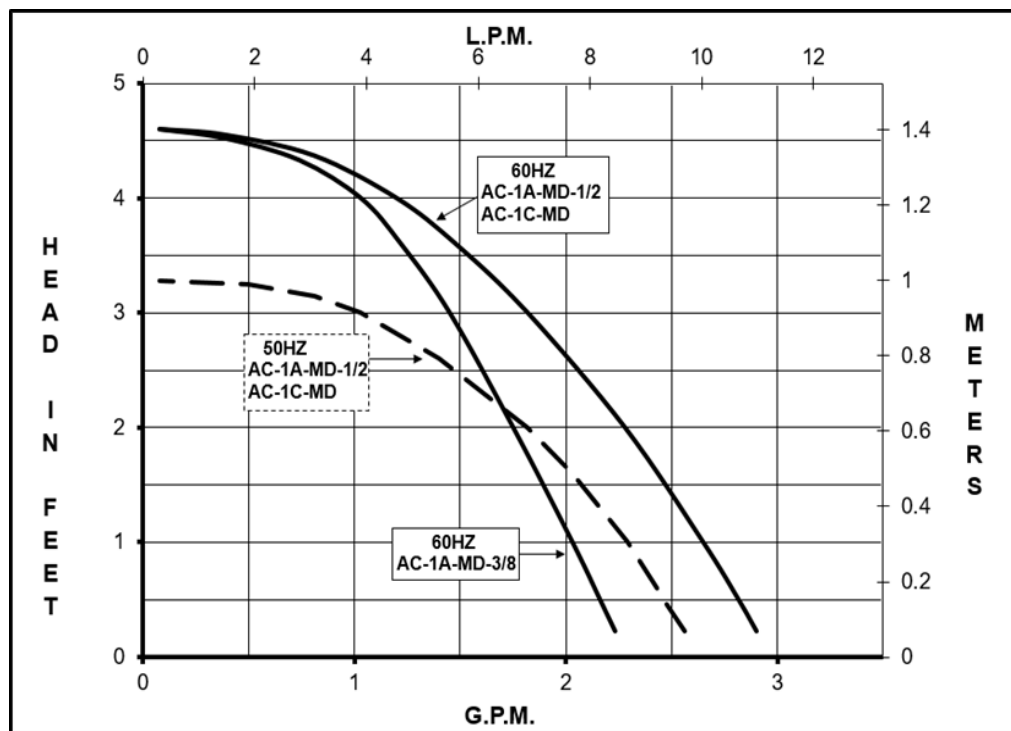
OPERATION:

Pumps are not self-priming, lack a suction lift, and thus require a **flooded suction**. Pumps **cannot be run dry** because the impeller requires the liquid being pumped for lubrication. For application assistance, contact March Pump.

ELECTRICAL:

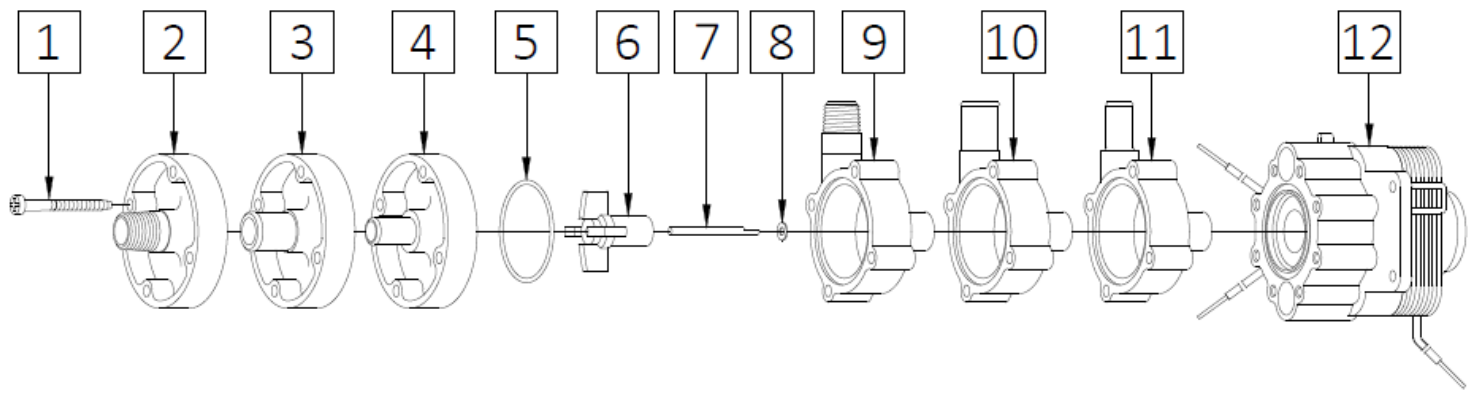
Motors are available in different electrical configurations such as 115 volt 60 Hz or 230 volt 50/60 Hz, 1 phase, and rated as continuous duty. Motors are skeleton type. Motors have 16" (40 cm) loose leads.

AC-1A-MD, AC-1C-MD



| Specifications | | AC-1A-MD-3/8 | | | | | | | | | | | AC-1A-MD-1/2 | | | | | | | | | | | AC-1C-MD | | | | | | | | | | |
|------------------------|----------|-------------------|----------|-----|-----|------------|-----|------|-------|-------|------|-----|-------------------|-----|----------|-----|----|------------|------|-------|-------|------|------|---------------------|-------------------------|--|--|--|--|--|--|--|--|--|
| Part Number | 115 V | 0115-0064-0300 | | | | | | | | | | | 0115-0064-0100 | | | | | | | | | | | 0115-0070-0100 | | | | | | | | | | |
| | 230 V | 0115-0064-0400 | | | | | | | | | | | 0115-0064-0200 | | | | | | | | | | | 0115-0071-0100 | | | | | | | | | | |
| Inlet - Outlet | | 3/8" OD - 3/8" OD | | | | | | | | | | | 1/2" OD - 1/2" OD | | | | | | | | | | | 1/4" MPT - 1/4" MPT | | | | | | | | | | |
| Max Internal Pressure | | 50 psi (344 kPa) | | | | | | | | | | | 50 psi (344 kPa) | | | | | | | | | | | 50 psi (344 kPa) | | | | | | | | | | |
| Max Liquid Temperature | | 190 °F (87 °C) | | | | | | | | | | | 190 °F (87 °C) | | | | | | | | | | | 190 °F (87 °C) | | | | | | | | | | |
| MODEL | 60 Hz | | | | | | | | | | | | 50 Hz | | | | | | | | | | | | Packed Weight Pounds | | | | | | | | | |
| | Max Flow | | Max Head | | | ELECTRICAL | | | | | | | Max Flow | | Max Head | | | ELECTRICAL | | | | | | | | | | | | | | | | |
| | gpm | lpm | ft | psi | m | Ph | V | A | Hp | kW | Rpm | gpm | lpm | ft | psi | m | Ph | V | A | Hp | kW | Rpm | | | | | | | | | | | | |
| AC-1A-MD-3/8 | 2.3 | 8.7 | 4.6 | 2.0 | 1.4 | 1 | 115 | 0.45 | 1/200 | 0.003 | 3200 | 2.0 | 7.5 | 3.3 | 1.4 | 1.0 | 1 | 230 | 0.23 | 1/200 | 0.003 | 2650 | 1.85 | | | | | | | | | | | |
| | | | | | | | 230 | 0.23 | | | | | | | | | | 2650 | | | | | | | | | | | | | | | | |
| AC-1A-MD-1/2 | 3.0 | 11.3 | 4.6 | 2.0 | 1.4 | 1 | 115 | 0.45 | 1/200 | 0.003 | 3200 | 2.3 | 9.0 | 3.3 | 1.4 | 1.0 | 1 | 230 | 0.23 | 1/200 | 0.003 | 2650 | 1.85 | | | | | | | | | | | |
| | | | | | | | 230 | 0.23 | | | | | | | | | | 2650 | | | | | | | | | | | | | | | | |
| AC-1C-MD | 3.0 | 11.3 | 4.6 | 2.0 | 1.4 | 1 | 115 | 0.45 | 1/200 | 0.003 | 3200 | 2.3 | 9.0 | 3.3 | 1.4 | 1.0 | 1 | 230 | 0.23 | 1/200 | 0.003 | 2650 | 1.85 | | | | | | | | | | | |
| | | | | | | | 230 | 0.23 | | | | | | | | | | 2650 | | | | | | | | | | | | | | | | |

All specifications & data are based on pumping water & are intended as a guideline only. Specifications may vary with different motors.



| AC-1A-MD-3/8 | | | | AC-1A-MD-1/2 | | | |
|---|----------------|---------|---|--|----------------|---------|---|
| Item | Part Number | QTY REQ | Description | Item | Part Number | QTY REQ | Description |
| 1 | 0115-0062-1000 | 4 | #7-19 x 1-7/16" Long Self-Tapping Screw (Stainless) | 1 | 0115-0062-1000 | 4 | #7-19 x 1-7/16" Long Self-Tapping Screw (Stainless) |
| 2 | 0115-0075-1000 | 1 | Cover with 3/8" OD Inlet (Polypropylene) | 2 | 0115-0060-1000 | 1 | Cover with 1/2" OD Inlet (Polypropylene) |
| 5 | 0115-0018-1000 | 1 | 1/16" CS x 1-7/16" OD "O" Ring for Cover (Buna N) | 5 | 0115-0018-1000 | 1 | 1/16" CS x 1-7/16" OD "O" Ring for Cover (Buna N) |
| 6 | 0115-0119-1000 | 1 | Encapsulated Impeller (Polypropylene) | 6 | 0115-0119-1000 | 1 | Encapsulated Impeller (Polypropylene) |
| 7 | 0115-0032-1000 | 1 | Shaft (316 Stainless Steel) | 7 | 0115-0032-1000 | 1 | Shaft (316 Stainless Steel) |
| 8 | 0115-0033-1000 | 1 | Thrust Washer (Carbon/Teflon) | 8 | 0115-0033-1000 | 1 | Thrust Washer (Carbon/Teflon) |
| 11 | 0115-0074-1000 | | Rear Housing with 3/8" OD Outlet (Polypropylene) | 10 | 0115-0059-1000 | 1 | Rear Housing with 1/2" OD Outlet (Polypropylene) |
| 12 | Not Available | | Motor Assembly (115V 50/60 Hz) or (230V 50/60 Hz) | 12 | Not Available | | Motor Assembly (115V 50/60 Hz) or (230V 50/60 Hz) |
| AC-1C-MD | | | | Materials in contact with the solution: | | | |
| 1 | 0115-0062-1000 | 4 | #7-19 x 1-7/16" Long Self-Tapping Screw (Stainless) | Polypropylene, Buna N, 316 Stainless Steel, Carbon/Teflon Washer. | | | |
| 2 | 0115-0058-1000 | 1 | Cover with 1/4" MPT Inlet (Polypropylene) | Note: Contact Factory for other materials and/or parts not listed. Special voltage motors are available upon special order. | | | |
| 5 | 0115-0018-1000 | 1 | 1/16" CS x 1-7/16" OD "O" Ring for Cover (Buna N) | | | | |
| 6 | 0115-0119-1000 | 1 | Encapsulated Impeller (Polypropylene) | | | | |
| 7 | 0115-0032-1000 | 1 | Shaft (316 Stainless Steel) | | | | |
| 8 | 0115-0033-1000 | 1 | Thrust Washer (Carbon/Teflon) | | | | |
| 9 | 0115-0057-1000 | 1 | Rear Housing with 1/4" MPT Outlet (Polypropylene) | | | | |
| 12 | Not Available | | Motor Assembly (115V 50/60 Hz) or (230V 50/60 Hz) | | | | |
| LIMITED WARRANTY: March pumps are guaranteed only against defects in workmanship or materials for a period of one year from date of manufacture pumping water. For the complete warranty and to register online go to www.marchpump.com/warranty-registration | | | | | | | |