



MARCH PUMPS

1819 PICKWICK AVE., GLENVIEW, IL 60026-1306, U.S.A
 PHONE: (847) 729-5300 - FAX: (847) 729-7062
 WWW.MARCHPUMP.COM

DESCRIPTION: Series 1 are centrifugal magnetic drive pumps, eliminating the need for a shaft seal. Pumps are serviceable with a screwdriver. The models are hermetically encapsulated, which allows the pumps to run fully submerged in many liquids or in open air for complete moisture protection. See the parts list for a breakdown of parts.

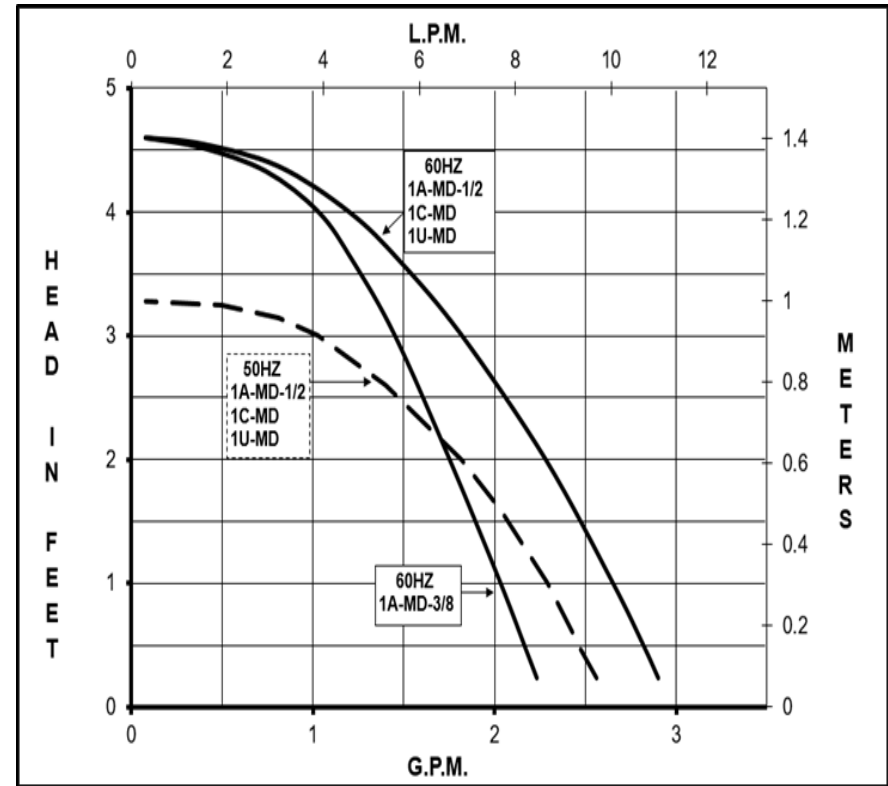
OPERATION: Pumps are not self-priming, lack a suction lift, and thus require a **flooded suction**. Pumps **cannot be run dry** because the impeller requires the liquid being pumped for lubrication. For application assistance, contact March Pump.

ELECTRICAL: Motors are available in different electrical configurations such as 115V 50/60HZ or 230V 50/60HZ 1 phase. The motors are U.L. listed and rated as continuous duty.

- 115 Volt Motors have a 6-foot (1.8 m) long cord with plug.
- 230 Volt Motors have a 6-foot (1.8 m) long cord without a plug.

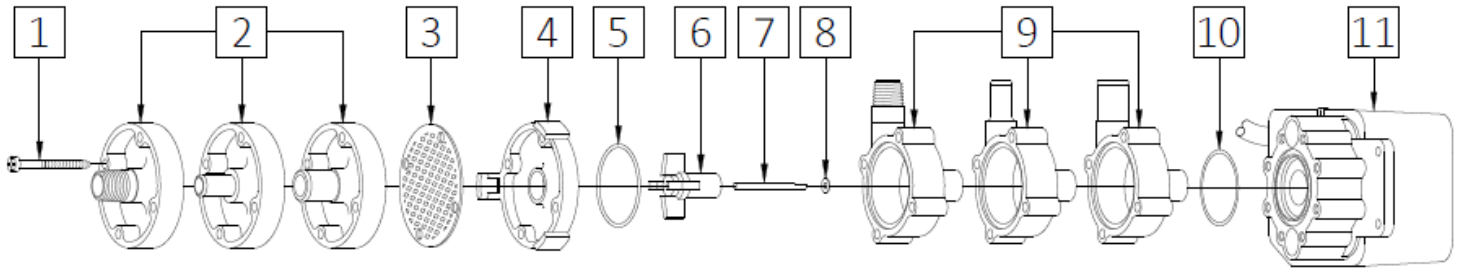
Specifications		1A-MD -3/8	1A-MD -1/2	1C-MD	1U-MD
Product	115V	0115-0007-0100	0115-0007-0200	0155-0007-0300	0115-0007-0400
	230V	0115-0007-0600	0115-0007-0700	0115-0007-0800	0115-0007-0900
Inlet-Outlet		3/8" OD - 3/8" OD	1/2" OD - 1/2" OD	1/4" MPT - 1/4" MPT	Screen - 1/4" MPT
Max Internal Pressure		50PSI (344 kPa)	50PSI (344 kPa)	50PSI (344kPa)	50PSI (344 kPa)
Max Liquid Temperature		190F/87C Open Air 160F/71C Submersible	190F/87C Open Air 160F/71C Submersible	190F/87C Open Air 160F/71C Submersible	190F/87C Open Air 160F/71C Submersible

1A-MD, 1C-MD, 1U-MD



Model	60Hz												50Hz												Packed Weight Pounds
	Max Flow		Max Head			Electrical							Max Flow		Max Head			Electrical							
	GPM	LPM	FT	PSI	M	Ph	V	A	HP	kW	RPM	GPM	LPM	Feet	PSI	M	Ph	V	A	HP	kW	RPM			
1A-MD -3/8	2.3	8.7	4.6	2.0	1.4	1	115/230	0.45/0.23	1/200	0.003	3200	2.0	7.5	3.3	1.4	1.0	1	115/230	0.45/0.23	1/200	0.003	2650	2.65		
1A-MD -1/2	3.0	11.3	4.6	2.0	1.4	1	115/230	0.45/0.23	1/200	0.003	3200	2.3	9.0	3.3	1.4	1.0	1	115/230	0.45/0.23	1/200	0.003	2650	2.65		
1C-MD	3.0	11.3	4.6	2.0	1.4	1	115/230	0.45/0.23	1/200	0.003	3200	2.3	9.0	3.3	1.4	1.0	1	115/230	0.45/0.23	1/200	0.003	2650	2.60		
1U-MD	3.0	11.3	4.6	2.0	1.4	1	115/230	0.45/0.23	1/200	0.003	3200	2.3	9.0	3.3	1.4	1.0	1	115/230	0.45/0.23	1/200	0.003	2650	2.65		

All specifications & data are based on pumping water & are intended as a guideline only. Specifications may vary with different motors.



NOTE: When attaching the Drive Magnet to the motor shaft, position the face of the Drive Magnet flush with the face of the Motor Bracket.

1A-MD-3/8				1A-MD-1/2			
Item	Part Number	QTY REQ	Description	Item	Part Number	QTY REQ	Description
1	0115-0062-1000	4	#7-19 x 1-7/16" Long Self-Tapping Screw (Stainless)	1	0115-0062-1000	4	#7-19 x 1-7/16" Long Self-Tapping Screw (Stainless)
2	0115-0075-1000	1	Cover with 3/8" OD Inlet (Polypropylene)	2	0115-0060-1000	1	Cover with 1/2" OD Inlet (Polypropylene)
5	0115-0018-1000	1	1/16" CS x 1-7/16" OD "O" Ring for Cover (Buna N)	5	0115-0018-1000	1	1/16" CS x 1-7/16" OD "O" Ring for Cover (Buna N)
6	0115-0119-1000	1	Encapsulated Impeller (Polypropylene)	6	0115-0119-1000	1	Encapsulated Impeller (Polypropylene)
7	0115-0032-1000	1	Shaft (316 Stainless Steel)	7	0115-0032-1000	1	Shaft (316 Stainless Steel)
8	0115-0033-1000	1	Thrust Washer (Carbon/Teflon)	8	0115-0033-1000	1	Thrust Washer (Carbon/Teflon)
9	0115-0074-1000		Rear Housing with 3/8" OD Outlet (Polypropylene)	9	0115-0059-1000	1	Rear Housing with 1/2" OD Outlet (Polypropylene)
10	0115-0017-1000	1	1/16" CS x 1-5/16" OD "O" Ring for Bracket (Buna N)	10	0115-0017-1000	1	1/16" CS x 1-5/16" OD "O" Ring for Bracket (Buna N)
11	Not Available		Epoxy Motor, Bracket, Cord Assembly (115 V 50/60 Hz) or (230 V 50/60 Hz)	11	Not Available		Epoxy Motor, Bracket, Cord Assembly (115 V 50/60 Hz) or (230 V 50/60 Hz)
1C-MD				1U-MD			
1	0115-0062-1000	4	#7-19 x 1-7/16" Long Self-Tapping Screw (Stainless)	1	0115-0062-1000	4	#7-19 x 1-7/16" Long Self-Tapping Screw (Stainless)
2	0115-0058-1000	1	Cover with 1/4" MPT Inlet (Polypropylene)	3	0115-0012-1000	1	Inlet Screen (Polypropylene)
5	0115-0018-1000	1	1/16" CS x 1-7/16" OD "O" Ring for Cover (Buna N)	4	0115-0016-1000	1	Cover (Cyclocac)
6	0115-0119-1000	1	Encapsulated Impeller (Polypropylene)	5	0115-0018-1000	1	1/16" CS x 1-7/16" OD "O" Ring for Cover (Buna N)
7	0115-0032-1000	1	Shaft (316 Stainless Steel)	6	0115-0119-1000	1	Encapsulated Impeller (Polypropylene)
8	0115-0033-1000	1	Thrust Washer (Carbon/Teflon)	7	0115-0032-1000	1	Shaft (316 Stainless Steel)
9	0115-0057-1000	1	Rear Housing with 1/4" MPT Outlet (Polypropylene)	8	0115-0033-1000	1	Thrust Washer (Carbon/Teflon)
10	0115-0017-1000	1	1/16" CS x 1-5/16" OD "O" Ring for Bracket (Buna N)	9	0115-0057-1000	1	Rear Housing with 1/4" MPT Outlet (Polypropylene)
11	Not Available		Epoxy Motor, Bracket, Cord Assembly (115 V 50/60 Hz) or (230 V 50/60 Hz)	10	0115-0017-1000	1	1/16" CS x 1-5/16" OD "O" Ring for Bracket (Buna N)
				11	Not Available		Epoxy Motor, Bracket, Cord Assembly (115 V 50/60 Hz) or (230 V 50/60 Hz)

NOTE: Contact Factory for other materials and/or parts not listed.

Explosion proof and special voltage motors are available upon special order.

Materials in Contact with Solution: Open Air: Polypropylene, Buna N, 316 Stainless Steel, Carbon/Teflon Washer.

When Submerged: The following additional materials are in contact: Epoxy, Noryl, Cyclocac, SJT cord.

LIMITED WARRANTY: March pumps are guaranteed only against defects in workmanship or materials for a period of one year from date of manufacture pumping water. For the complete warranty and to register online go to www.marchpump.com/warranty-registration

For the General Installation Instruction Manual see this link, <https://www.marchpump.com/wp-content/uploads/2019/07/march-pump-general-installation-guide-0750-040.pdf>

Or scan QR Code

