



# MARCH PUMPS

1819 PICKWICK AVE., GLENVIEW, IL 60026-1306, U.S.A  
 PHONE: (847) 729-5300 - FAX: (847) 729-7062  
 WWW.MARCHPUMP.COM

## AC-3CP-MD, AC-3AP-MD BC-3CP-MD, BC-3AP-MD BC-3K-MD

### DESCRIPTION:

Series 3 are centrifugal magnetic drive pumps, eliminating the need for a shaft seal. Pumps are serviceable with a screwdriver. See the parts list for a breakdown of parts.

### OPERATION:

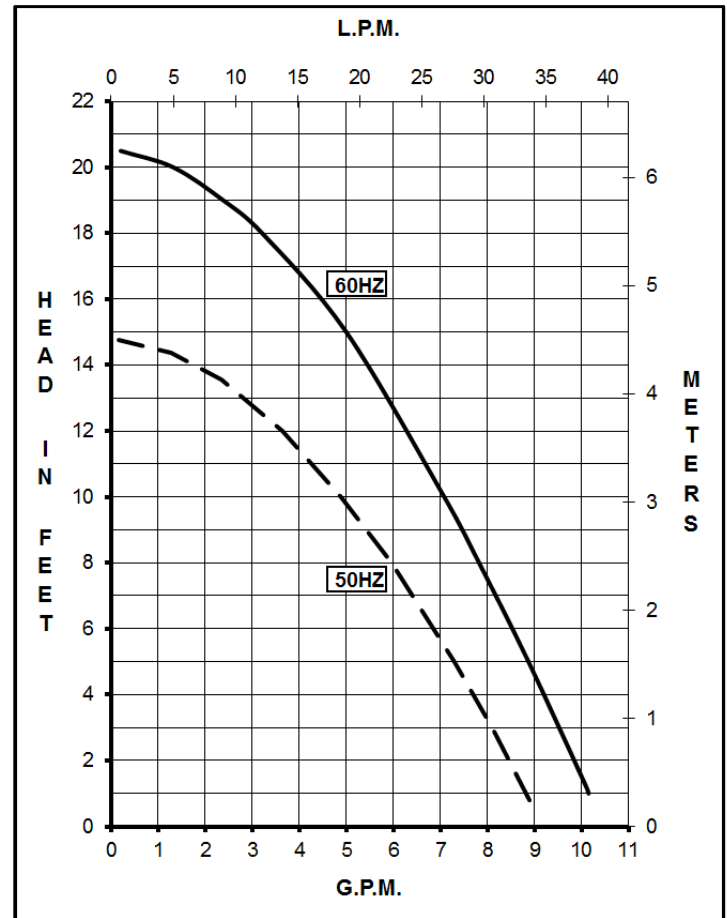
Pumps are not self-priming, lack a suction lift, and thus require a **flooded suction**. Pumps **cannot be run dry** because the impeller requires the liquid being pumped for lubrication. For liquids with a specific gravity greater than water, have a higher viscosity, or for elevated temperatures, a trimmed impeller may be necessary. For application assistance, contact March Pump.

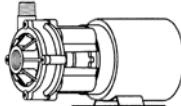
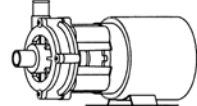
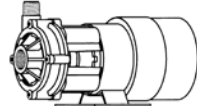
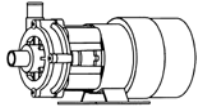
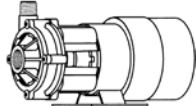
### ELECTRICAL:

Motors are available in different electrical configurations such as 115 Volt 60 Hz, 115 Volt 50/60 Hz, or 230 Volt 50/60 Hz, 1 phase. The motors are U.L. listed and rated as continuous duty.

### LIMITED WARRANTY:

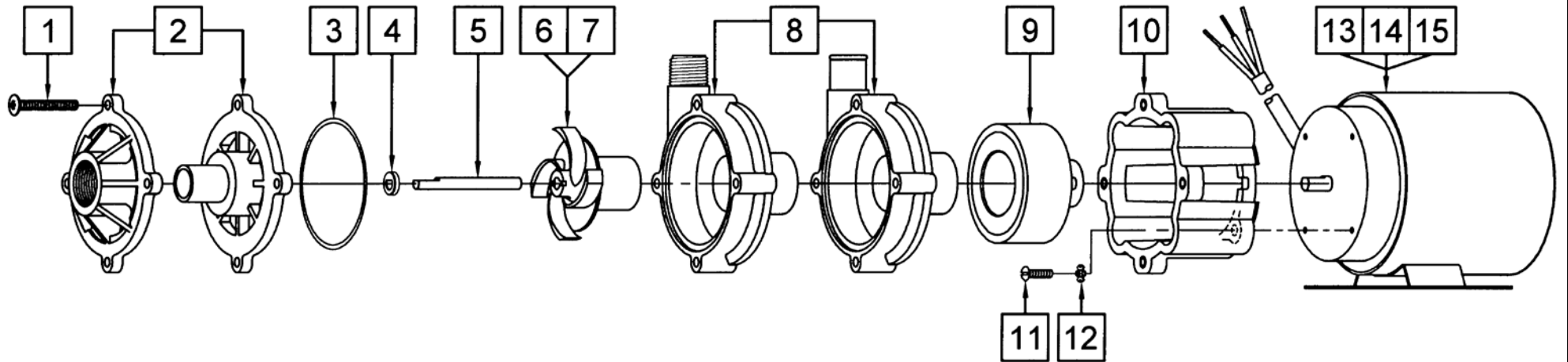
March pumps are guaranteed only against defects in workmanship or materials for a period of one year from date of manufacture pumping water. For the complete warranty and to register online go to [www.marchpump.com/warranty-registration](http://www.marchpump.com/warranty-registration)



Model Abbreviations: C: Threaded Inlet/Outlet, A: Smooth Inlet/Outlet, K: Kynar, AC: Air Cooled Motor, BC: Blast Cooled Motor																						
MODELS	AC-3CP-MD				AC-3AP-MD				BC-3CP-MD				BC-3AP-MD				BC-3K-MD					
																						
Product #	115 V	0130-0018-0100				0130-0103-0100				0130-0018-0300				0130-0105-0100				0130-0138-0100				
	230 V	0130-0018-0200				0130-0103-0200				0130-0018-0600				0130-0105-0200				0130-0138-0200				
UNITS	60 Hz		50 Hz		60 Hz		50 Hz		60 Hz		50 Hz		60 Hz		50 Hz		60 Hz		50 Hz			
	Max Flow	10 gpm	33 lpm	10 gpm	33 lpm	10 gpm	33 lpm	10 gpm	33 lpm	10 gpm	33 lpm	10 gpm	33 lpm	10 gpm	33 lpm	10 gpm	33 lpm	10 gpm	33 lpm			
Max Head	20.5 ft		4.5 m		20.5 ft		4.5 m		20.5 ft		4.5 m		20.5 ft		4.5 m		20.5 ft		4.5 m			
	8.9 psi				8.9 psi				8.9 psi				8.9 psi				8.9 psi					
Inlet - Outlet	3/4" FPT - 1/2" MPT				3/4" OD - 3/4" OD				3/4" FPT - 1/2" MPT				3/4" OD - 3/4" OD				3/4" FPT - 1/2" MPT					
Max Internal Pressure	50 psi / 344 kPa				50 psi / 344 kPa				50 psi / 344 kPa				50 psi / 344 kPa				75 psi / 517 kPa					
Max Liquid Temperature	190 °F / 87 °C				190 °F / 87 °C				190 °F / 87 °C				190 °F / 87 °C				200 °F / 93 °C					
Packed Weight	115 V	6.55 lbs / 2.97 kg				6.55 lbs / 2.97 kg				7.90 lbs / 3.58 kg				7.90 lbs / 3.58 kg				7.90 lbs / 3.58 kg				
	230 V	7.50 lbs / 3.40 kg				7.50 lbs / 3.40 kg				8.10 lbs / 3.67 kg				8.10 lbs / 3.67 kg				8.10 lbs / 3.67 kg				
ELECTRICAL 60 Hz	W	A	Hp	Rpm	W	A	Hp	Rpm	W	A	Hp	Rpm	W	A	Hp	Rpm	W	A	Hp	Rpm		
	115 V	150	2.3	1/15	3450	150	2.3	1/15	3450	146	2.1	1/14	3450	146	2.1	1/14	3450	146	2.1	1/14	3450	
	230 V	134	0.9	1/15	3450	134	0.9	1/15	3450	139	1.0	1/15	3450	139	1.0	1/15	3450	139	1.0	1/15	3450	
ELECTRICAL 50 Hz	W	A	kW	Rpm	W	A	kW	Rpm	W	A	kW	Rpm	W	A	kW	Rpm	W	A	kW	Rpm		
	115 V																					
	230 V	141	1.0	0.049	2850	141	1.0	0.049	2850	141	1.1	0.049	2850	141	1.1	0.049	2850	141	1.1	0.049	2850	
OVERALL SIZE	Height	Width	Length	Height	Width	Length	Height	Width	Length	Height	Width	Length	Height	Width	Length	Height	Width	Length	Height	Width	Length	
	115 V	5"	3.91"	8.12"	5"	3.91"	8.90"	4.94"	3.91"	9.06"	4.94"	3.91"	9.84"	4.94"	3.91"	9.06"	4.94"	3.91"	9.06"	4.94"	3.91"	9.06"
	230 V	5"	4"	8.77"	5"	4"	9.55"	4.94"	3.91"	9.06"	4.94"	3.91"	9.84"	4.94"	3.91"	9.06"	4.94"	3.91"	9.06"	4.94"	3.91"	9.06"
Materials in Contact with Solution:	Polypropylene, Ceramic, Buna N, Ceramic Mag.				Polypropylene, Ceramic, Buna N, Ceramic Mag.				Polypropylene, Ceramic, Viton				Polypropylene, Ceramic, Viton				Kynar/Carbon Filled, Ceramic, Viton					

All specifications/values are based on pumping water and are intended as a guideline only. Values may vary with different motors.

**PARTS LIST**



**NOTE:** When attaching the Drive Magnet to the motor shaft, position the face of the Drive Magnet 3/32 inch below the face of the Motor Bracket.

#	DESCRIPTION	MATERIAL	SIZE (Inches)	QTY.	PART #				
					AC-3CP-MD	AC-3AP-MD	BC-3CP-MD	BC-3AP-MD	BC-3K-MD
1	Screw	Stainless	#10-32 x 1-1/2 Lg.	4			0823-0008-1000		
2	Cover	Polypropylene	3/4 FPT Inlet	1	0130-0021-1000		0130-0021-1000		
		Polypropylene	3/4 OD Inlet	1		0130-0064-1000		0130-0064-1000	
		Kynar	3/4 FPT Inlet	1					0130-0111-1000
3	"O" Ring	Buna N	3/32 CS x 2-13/16 OD	1	0130-0011-1000				
	"O" Ring (Option)	Viton		1				0130-0033-1000	
		Viton/Teflon		1			0130-0121-1000		
4	Thrust Washer	Ceramic		1			0130-0028-1000		
5	Shaft	Ceramic		1			0130-0024-1000		
6	Impeller	Polypropylene/Ceramic Magnet		1	0130-0020-0100				
7	Encapsulated Impeller	Polypropylene		1			0130-0069-0200		
		Kynar		1				0130-0112-0200	
8	Rear Housing	Polypropylene	1/2 MPT Outlet	1	0130-0018-1000		0130-0018-1000		
		Polypropylene	3/4 OD Outlet	1		0130-0102-1000		0130-0102-1000	
		Kynar	1/2 MPT Outlet	1				0130-0110-1000	
9	Drive Magnet			1			0130-0043-0200		
10	Motor Bracket	Plastic		1			0130-0066-0100		
11	Screw	Stainless	#8-32 x 5/8 Lg.	4			0618-0027-1000		
12	Lock Washer	Steel	#8	4			0140-0014-1000		
13	AC Motor, 115V, 60Hz			1	0130-0022-1000				
14	BC Motor, 115V, 50/60Hz (Not Shown)			1			0130-0140-1200		
15	AC or BC Motor, 230V, 50/60Hz			1			0130-0049-1200		

**NOTE:** Contact Factory for other materials and/or parts not listed.

0130-0032-1000 R28