



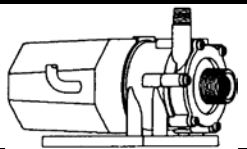
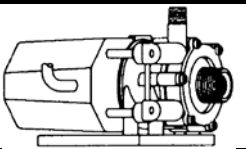
# MARCH PUMPS

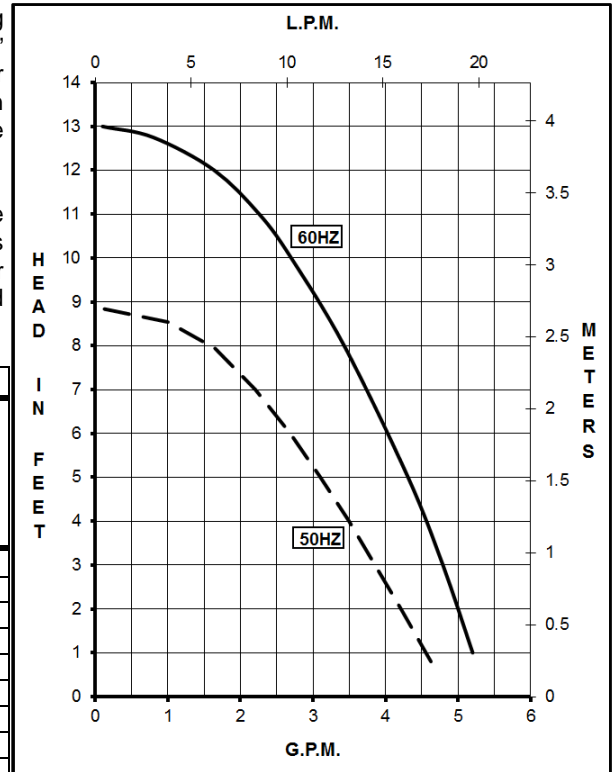
1819 PICKWICK AVE., GLENVIEW, IL 60026-1306, U.S.A  
 PHONE: (847) 729-5300 - FAX: (847) 729-7062  
 WWW.MARCHPUMP.COM

## AC-2CP-MD, AC-2AP-MD BC-2CP-MD, BC-2AP-MD 2CP-MD, LC-2CP-MD

**DESCRIPTION:** Series 2 are centrifugal magnetic drive pumps, eliminating the need for a shaft seal. Pumps can be serviced with a screwdriver. The "LC" model is hermetically encapsulated allowing the pump to run fully submerged or in open air for complete moisture protection. Model 2CP-MD must be run submerged only. See the parts list for a breakdown of parts. BC models have an encapsulated impeller magnet.

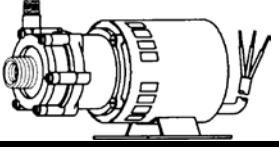
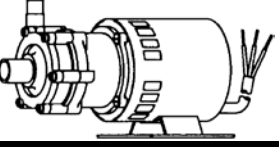
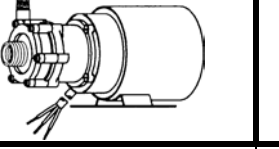
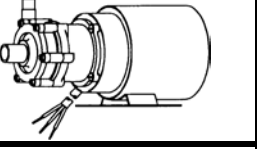
**OPERATION:** Pumps are not self-priming, lack a suction lift, and thus require a **flooded suction**. Pumps **cannot be run dry** because the impeller requires the liquid being pumped for lubrication. For liquids with a specific gravity greater than water, have a higher viscosity, or for elevated temperatures, a trimmed impeller may be necessary. For application assistance, contact March Pump.

SPECIFICATIONS	2CP-MD	LC-2CP-MD			
					
Model Abbreviations	CP: Threaded Ports	LC: Liquid Cooled			
Motor Type	Submersible	TE / Submersible			
Rating / Duty	U.L. listed motor / Continuous				
Max Flow	60Hz {5 gpm} - 50Hz {18.5 lpm}				
Max Head	60Hz {13 ft / 5.7 psi} - 50Hz {2.7 m}				
Inlet - Outlet	3/8" FPT & 3/4" MPT - 1/4" MPT				
Max Internal Pressure	50 psi - 3.4 bar	25 psi - 1.7 bar			
Liquid Temperature	130°F / 54°C Max				
Overall Size (H x W x L)	4.13" x 4.87" x 6.11" - 10.4 cm x 12.3 cm x 15.5 cm				
Packed Weight	(115V) 5.05 lbs / 2.29 kg	(115V) 5.10 lbs / 2.31 kg			
	(230V) 5.05 lbs / 2.29 kg	(230V) 5.20 lbs / 2.35 kg			
Electrical Connection	115V 6 ft Cord w/plug	230V 6 ft (1.8 m) Cord			
Models	2CP-MD & LC-2CP-MD				
	60Hz - 115V	50Hz - 115V	60Hz - 230V	50Hz - 230V	
1Ph	Watts - Amps	54 - 0.92	58 - 1.1	57 - 0.53	59 - 0.72
	Hp / Kw - Rpm	1/35 - 3450	0.021 - 2850	1/35 - 3450	0.021 - 2850
Materials in Contact with Solution:	Polypropylene, Ceramic, Viton, Stainless Steel, Ceramic Magnet <b>When submerged also:</b> Epoxy, Buna N, cord.				



### ELECTRICAL:

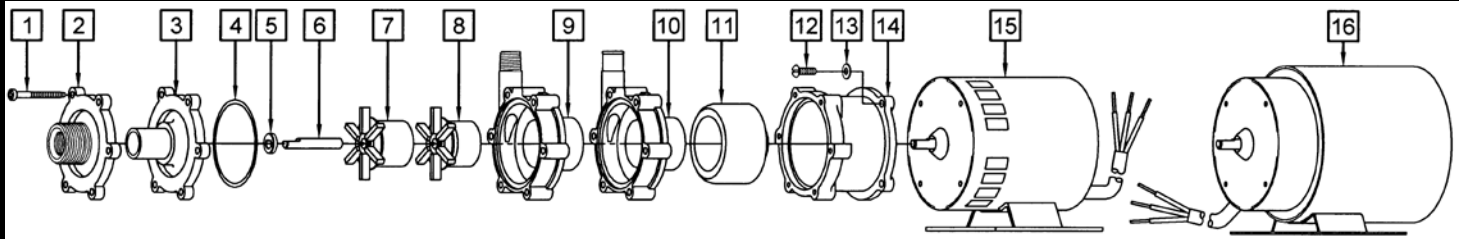
The AC-2CP-MD & AC-2AP-MD open air cooled motors as well as BC-2CP-MD & BC-2AP-MD blast cooled motors are available in different electrical configurations such as, 115V 50/60Hz, or 230V 50/60Hz, 1 phase. The 2CP-MD and LC-2CP-MD pumps are U.L. Recognized under File No. E80954. U.L. Recognition On Pumps Is For Water Only.

SPECIFICATIONS	AC-2CP-MD	AC-2AP-MD	BC-2CP-MD	BC-2AP-MD	
					
Model Abbreviations	CP: Threaded Ports	AP: Smooth Ports	CP: Threaded Ports	AP: Smooth Ports	
Motor Type	AC: Air Cooled		BC: Blast Cooled		
Rating / Duty	U.L. listed motor / Continuous				
Max Flow	60Hz {5 gpm} - 50Hz {18.5 lpm}		60Hz {5 gpm} - 50Hz {18.5 lpm}		
Max Head	60Hz {13 ft / 5.7 psi} - 50Hz {2.7 m}		60Hz {13 ft / 5.7 psi} - 50Hz {2.7 m}		
Inlet - Outlet	3/8" FPT & 3/4" MPT - 1/4" MPT	3/4" OD - 1/2" OD	3/8" FPT & 3/4" MPT - 1/4" MPT	3/4" OD - 1/2" OD	
Max Internal Pressure	50 psi - 3.4 bar				
Liquid Temperature	190°F / 87°C Max				
Overall Size (H x W x L)	4.5" x 3.5" x 7.39"	4.5" x 3.5" x 7.77"	4.56" x 3.91" x 8.36"	4.56" x 3.91" x 8.73"	
	11.4 cm x 8.8 cm x 18.7 cm	11.4 cm x 8.8 cm x 19.7 cm	11.5 cm x 9.9 cm x 21.2 cm	11.5 cm x 9.9 cm x 22.1 cm	
Models	AC-2CP-MD & AC-2AP-MD				
	60Hz - 115V	50Hz - 115V	60Hz - 230V	50Hz - 230V	
1Ph	Watts - Amps	77 - 1.2	84 - 1.2	75 - 0.6	82 - 0.6
	Hp / Kw - Rpm	1/40 - 3450	0.018 - 2850	1/40 - 3450	0.018 - 2850
Packed Weight	4.20 lbs / 1.90 kg		4.25 lbs / 1.92 kg		
Electrical Connection	3 ft (0.9 m) Cord				
Materials in Contact with Solution:	Polypropylene, Ceramic, Viton, Ceramic Magnet		Polypropylene, Ceramic, Viton		

All specifications & data are based on pumping water & are intended as a guideline only. Specifications may vary with different motors.

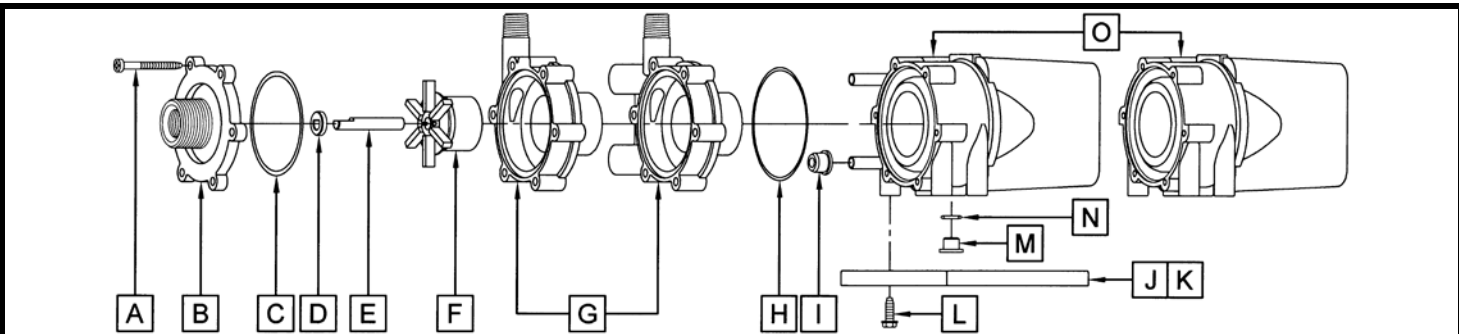
**NOTE:** When attaching the Drive Magnet to the motor shaft, position the face of the Drive Magnet 1/16 inch below the face of the Motor Bracket.

**PARTS LIST**



**NOTE:** When attaching the Drive Magnet to the motor shaft, position the face of the Drive Magnet 1/16 inch below the face of the Motor Bracket.

#	DESCRIPTION	MATERIAL	SIZE (Inches)	QTY.	AC-2CP-MD	AC-2AP-MD	BC-2CP-MD	BC-2AP-MD
1	Self-Tapping Screw	Stainless	#7-19 x 1-7/16 Lg.	6	0115-0062-1000			
2	Cover	Polypropylene	3/8 FPT x 3/4 MPT	1	0125-0056-1000		0125-0056-1000	
3	Cover	Polypropylene	3/4 OD Smooth	1		0125-0096-1000		0125-0096-1000
4	"O" Ring	Viton	3/32 CS x 2-3/16 OD	1	0125-0065-1000			
		Buna N (Option)	3/32 CS x 2-3/16 OD	1	0125-0066-1000			
5	Thrust Washer	Ceramic		1	0130-0028-1000			
6	Shaft	Ceramic		1	0125-0061-1000			
		Stainless (Option)		1	0125-0125-1000			
7	Impeller Encapsulated	Polypropylene		1	0125-0087-0200			
8	Impeller Bare Magnet	Polypropylene/Ceramic		1	0125-0055-0100			
9	Rear Housing	Polypropylene	1/4 MPT	1	0125-0058-1000		0125-0058-1000	
10	Rear Housing	Polypropylene	1/2 OD Smooth	1		1008-0001-1000		1008-0001-1000
11	Drive Magnet		0.250 Bore	1	0125-0083-0100			
12	Screw	Stainless	#8-32 x 1/2 Lg.	4	0150-0015-1000			
13	Washer	Stainless	#8	4	0858-0004-1000			
14	Motor Bracket	Plastic		1	0125-0069-1000			
15	Motor, 115V, 50/60Hz, Air Cooled			1	0125-0052-1000			
	Motor, 230V, 50/60Hz, Air Cooled			1	0125-0063-1000			
16	Motor, 115V, 50/60Hz, Blast Cooled			1	0125-0088-1000			
	Motor, 230V, 50/60Hz, Blast Cooled			1	0125-0089-1000			



#	2CP-MD	LC-2CP-MD	MATERIAL	SIZE (Inches)	QTY.	2CP-MD	LC-2CP-MD
A	Self-Tapping Screw		Stainless	#7-19 x 1-7/16 Lg.	6	0115-0062-1000	
B	Cover		Polypropylene	3/8 FPT x 3/4 MPT	1	0125-0056-1000	
C	"O" Ring		Viton	3/32 CS x 2-3/16 OD	1	0125-0065-1000	
D	Thrust Washer		Ceramic		1	0130-0028-1000	
E	Shaft		Stainless		1	0125-0125-1000	
F	Impeller with Ceramic Magnet		Polypropylene		1	0125-0055-0100	
G	Rear Housing	Rear Housing & Plug	Polypropylene	1/4 MPT	1	0125-0058-1000	0125-0057-0100
H	Bracket "O" Ring		Viton	1/16 CS x 2-3/8 OD	1	0125-0121-1000	
I	Cooling Tube Seal		Buna N		2	0125-0007-1000	
J	Mounting Base		Polypropylene		1	0125-0060-1000	
K	Marine Base (Not Shown) (Option)		Polypropylene & Grommets		1	0125-0113-0100	
L	Base Screw		Stainless		4	0125-0130-1000	
M	Plug (Motor Bracket)				1	0125-0110-1000	
N	"O" Ring		Viton	1/16 CS x 7/16 OD	1	0210-0008-1000	
O	Epoxy Motor Assembly	L.C. Epoxy Motor Assembly			n/a	Not Available	

**LIMITED WARRANTY:**

March pumps are guaranteed only against defects in workmanship or materials for a period of one year from date of manufacture pumping water. For the complete warranty and to register online go to [www.marchpump.com/warranty-registration](http://www.marchpump.com/warranty-registration)

**NOTE:** Contact Factory for other materials and/or parts not listed.

0125-0076-1000 R24