



MARCH PUMPS

1819 PICKWICK AVE., GLENVIEW, IL 60026-1306, U.S.A
PHONE: (847) 729-5300 - FAX: (847) 729-7062
WWW.MARCHPUMP.COM

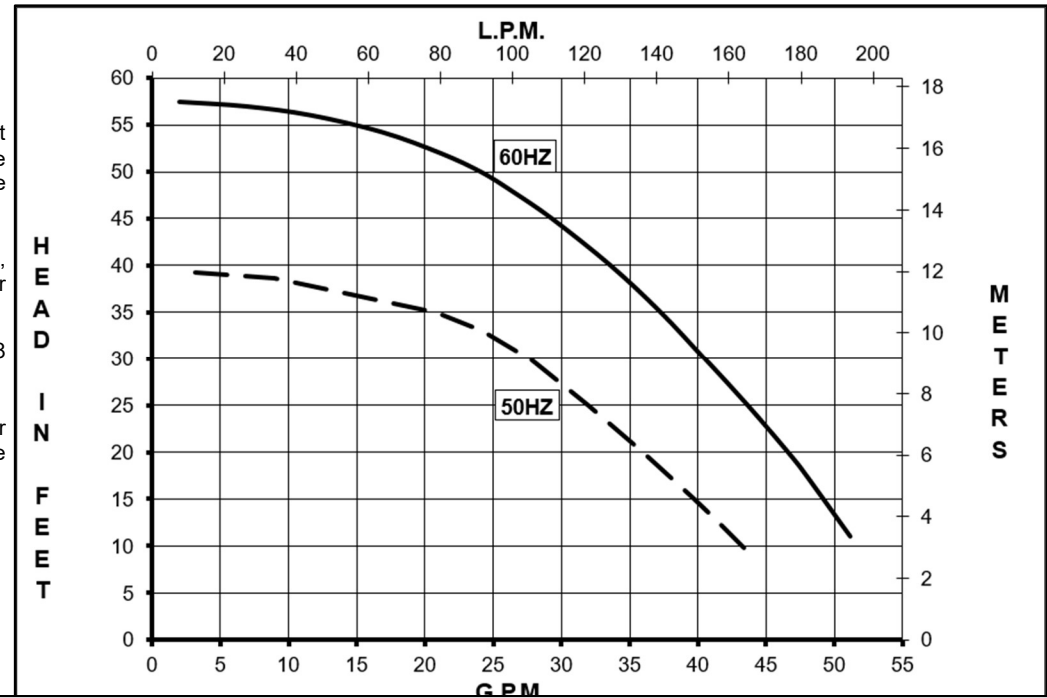
DESCRIPTION: The March beer pump TE-7SSB-MD is a non-self-priming magnetic drive unit specifically to handle hot wort and water. The unit requires liquid being pumped to lubricate the internal parts. If the pump is run dry for a period of time the impeller and shaft may become damaged. To regulate the flow use a valve on the discharge/outlet.

ELECTRICAL: 1 phase 115/230 Volt, 60 Hz, 110/220 Volt, 50 Hz. 3 phase 230/460 Volt, 60 Hz, 190/380 Volt, 50 Hz. Motors are totally enclosed fan cooled and are U.L. listed as well as rated for continuous operation. All motors have a conduit box for electrical connections.

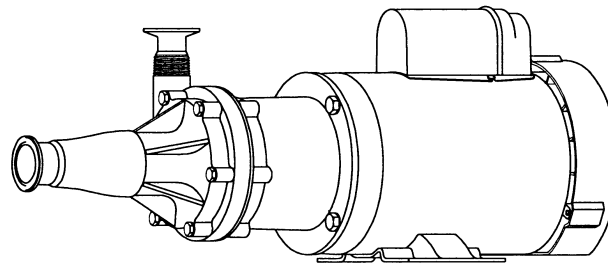
NOTE: When attaching drive magnet to the motor shaft, position the face of the drive magnet 1/8 inch below the face of the motor bracket.

LIMITED WARRANTY: March pumps are guaranteed only against defects in workmanship or materials for a period of one year from date of manufacture pumping water. For the complete warranty and to register online go to www.marchpump.com/warranty-registration

TE-7SSB-MD w/ 1-1/2 x 1 SANITARY FITTINGS



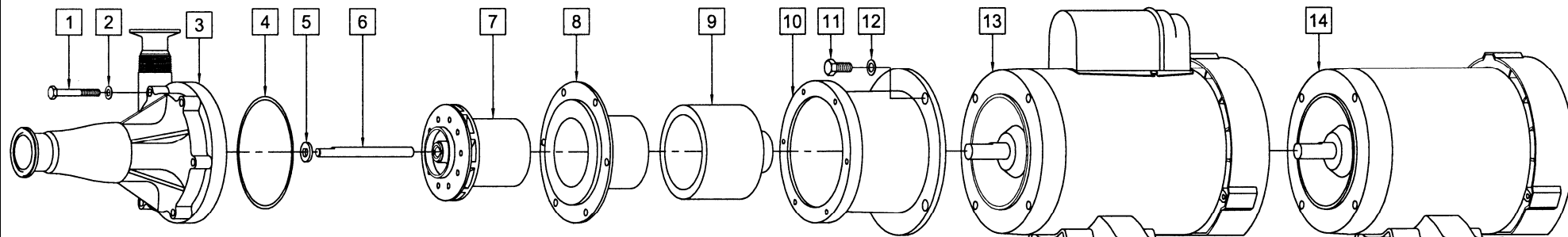
SPECIFICATIONS



Product #	1 Phase	0155-0249-0300																													
	3 Phase	0155-0249-0400																													
Inlet - Outlet		1-1/2" Tri-Clamp - 1-1/2" Tri-Clamp																													
Max Internal Pressure		200 psi (1378 kPa)																													
Max Liquid Temperature		225 °F (107 °C)																													
MODEL	60 Hz												50 Hz										Height		Width		Length		Packed Weight		
	Max Flow		Max Head		ELECTRICAL								Max Flow		Max Head		ELECTRICAL														
	gpm	lpm	ft	psi	m	Ph	V	A	Hp	kW	Rpm	gpm	lpm	ft	psi	m	Ph	V	A	Hp	kW	Rpm	Inches	cm	Inches	cm	Inches	cm	lbs	kg	
TE-7SSB-MD	53	201	57.5	24.9	17.5	1	115	12.6	1.00	0.75	3450	47	180	39.36	17.1	12.0	1	110	14.3	1.00	0.75	2850	8.25	20.9	9.10	23.1	22.72	57.7	46.5	21.0	
	53	201	57.5	24.9	17.5	3	230	3.0	1.00	0.75	3450	47	180	39.36	17.1	12.0	3	190	3.3	1.00	0.75	2850	8.25	20.9	9.69	24.6	21.32	54.1	42	19.0	
						460	1.5																380	1.6							
All specifications/values are based on pumping water with 1-1/2" pipe suction and 1" pipe discharge and are intended as a guideline only. Values may vary with different motors.																															

All specifications/values are based on pumping water with 1-1/2" pipe suction and 1" pipe discharge and are intended as a guideline only. Values may vary with different motors.

PARTS LIST



#	DESCRIPTION	MATERIAL	SIZE (Inches)	QTY.	PART #
1	Screw	Stainless	1/4-20 x 2 Lg.	6	0155-0014-1000
2	Washer	Stainless	1/4 ID x 1/2 OD	6	0155-0019-1000
3	Front Housing	316 Stainless		1	0155-0253-0100
4	"O" Ring	Ethylene Propylene	1/8 CS x 4-3/8 OD	1	0155-0105-1100
5	Thrust Washer	Ceramic		1	0155-0009-1000
6	Shaft	316 Stainless	4.257 Lg.	1	0155-0081-1000
7	Impeller w/Carbon Bushing	Kynar/Glass		1	0155-0160-0200
8	Rear Housing	316 Stainless		1	0155-0035-0010
9	Drive Magnet			1	0155-0130-0200
10	Motor Bracket	Aluminum		1	1095-0015-0010
11	Screw	Stainless	3/8-16 x 3/4 Lg.	4	0155-0017-1000
12	Washer	Stainless	3/8 ID x 5/8 OD	4	0155-0019-1000
13	Motor, TEFC, 1 HP, 1 Phase, 115/230 V, 50/60 Hz			1	0155-0173-1000
14	Motor, TEFC, 1 HP, 3 Phase, 230/460 V, 50/60 Hz			1	0155-0174-1000

Materials in Contact with Solution:

316 Stainless Steel, EPDM, Ceramic, Mica Teflon

NOTE: Contact Factory for other materials and/or parts not listed.

Explosion proof & special voltage motors are available upon special order.

0155-0046-1200