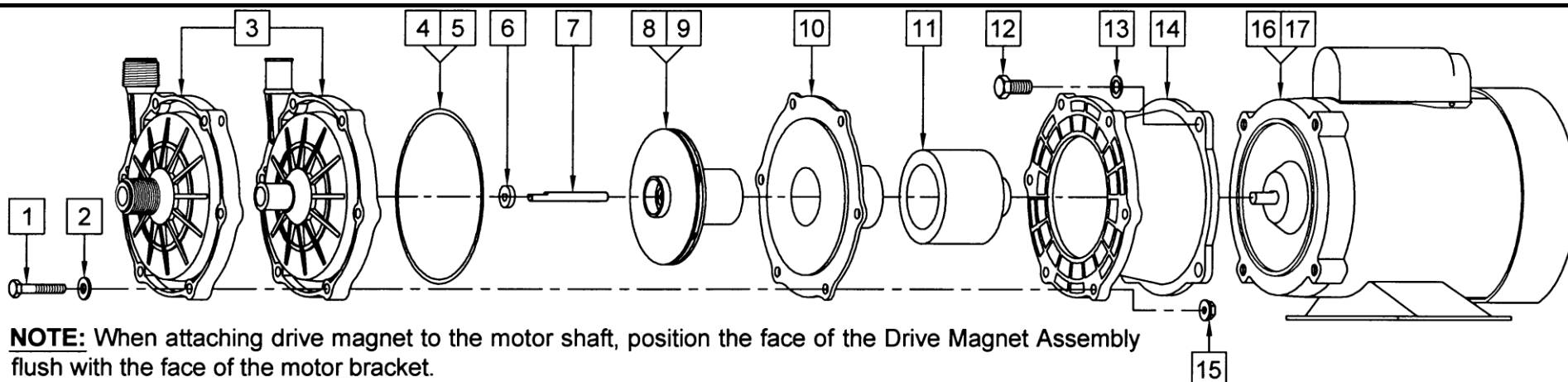




All specifications & data are based on pumping water & are intended as a guideline only. Specifications may vary with different motors.



#	DESCRIPTION	MATERIAL	SIZE (Inches)	QTY.	335-AP-MD	335-CP-MD
1	Screw	Stainless	1/4-20 x 1-1/2 Lg.	6	0153-0011-1000	
2	Washer	Stainless	1/4 ID x 5/8 OD	6	0157-0023-1000	
3	Front Housing w/Inlet & Outlet	Polypropylene	3/4 OD	1	0335-0003-1000	
3	Front Housing w/Inlet & Outlet	Polypropylene	3/4 MPT	1		0335-0002-1000
4	"O" Ring	Viton	1/8 CS x 5 OD	1	0335-0009-1000	
5	"O" Ring (Option)	Viton/Teflon		1	0335-0016-1000	
6	Thrust Washer	Ceramic		1	0821-0079-1000	
7	Shaft	Ceramic		1	0130-0024-1000	
8	Impeller	Polypropylene		1	0335-0005-0200	
9	Impeller w/Carbon Bushing (Option)	Polypropylene		1	0335-0005-0400	
10	Rear Housing w/Ceramic Thrust Washer	Polypropylene		1	0335-0004-0100	
11	Drive Magnet			1	0335-0017-0000	
12	Screw	Stainless	3/8-16 x 1 Lg.	4	0155-0017-1000	
13	Washer	Stainless	3/8 ID x 5/8 OD	4	0155-0019-1000	
14	Motor Bracket	Plastic		1	0335-0010-1000	
15	Hex Nut	Stainless	1/4-20	6	0156-0053-1000	
16	Motor, TEFC, 115/230 V, 50/60 Hz, 1 Phase			1	0151-0015-1000	
17	Motor, TEFC, 230/460 V, 50/60 Hz, 3 Phase (Not Shown)			1	0151-0039-1000	

Materials in Contact with Solution:

Polypropylene, Ceramic, Viton

Explosion proof and special voltage motors are available upon special order.

NOTE: Contact Factory for other materials and/or parts not listed. All dimensions are in inches unless otherwise marked.

0335-0011-1000 R10