



MARCH PUMPS

1819 PICKWICK AVE., GLENVIEW, IL 60026-1306, U.S.A
 PHONE: (847) 729-5300 - FAX: (847) 729-7062
 WWW.MARCHPUMP.COM

DC Brushless BC-2CP-MD DC Brush BC-2CP-MD

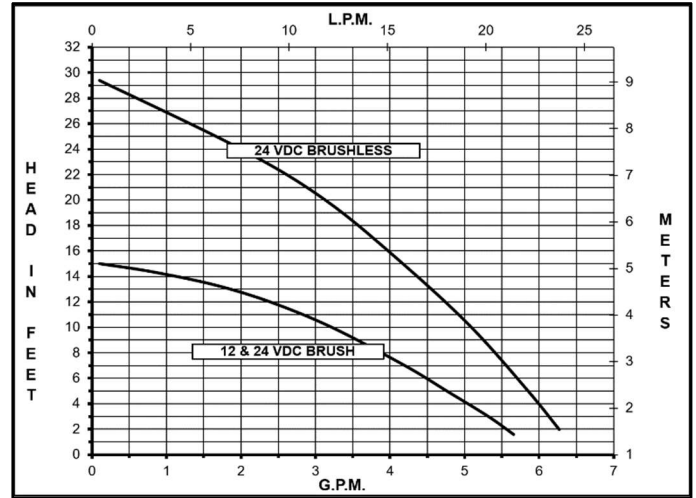
DESCRIPTION & OPERATION:

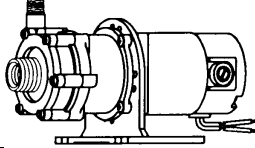
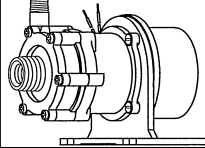
Series 2 are centrifugal magnetic drive pumps, eliminating the need for a shaft seal. Pumps can be serviced with a screwdriver. See the parts list for a breakdown of parts. Pumps are not self-priming, lack a suction lift, and thus require a **flooded suction**. Pumps **cannot be run dry** because the impeller requires the liquid being pumped for lubrication. For liquids with a specific gravity greater than water, have a higher viscosity, or for elevated temperatures, a trimmed impeller may be necessary. Brushless motors must be operated within a restricted voltage range due to the electronics. For application assistance, contact March Pump.

Materials in Contact with Solution: Polypropylene, Ceramic & Viton

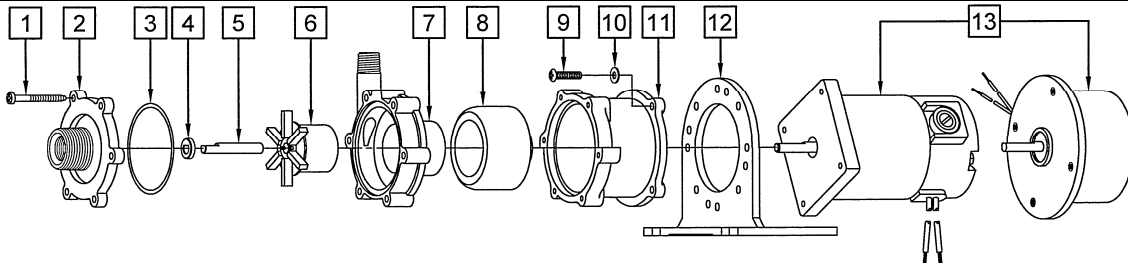
LIMITED WARRANTY:

March pumps are guaranteed only against defects in workmanship or materials for a period of one year from date of manufacture pumping water. For the complete warranty and to register online go to www.marchpump.com/warranty-registration



SPECIFICATIONS	BC-2CP-MD (12V & 24V DC)												BC-2CP-MD (24V DC)							
								BRUSH MOTOR With 9" Leads Red is Positive Black is Negative										BRUSHLESS MOTOR With 11-1/2" Leads Red is Positive Black is Negative Restrictive Voltage Range: 14V to 30V		
Product #	12VDC: 0125-0123-0100						24VDC: 0125-0123-0200						0125-0123-0400							
Inlet - Outlet	3/8" FPT & 3/4" MPT - 1/4" MPT												3/8" FPT & 3/4" MPT - 1/4" MPT							
Max Internal Pressure	50 psi - 344 kPa												50 psi - 344 kPa							
Max Liquid Temperature	190 °F / 87 °C												190 °F / 87 °C							
MODEL	Max Flow		Max Head			ELECTRICAL						Height		Width		Length		Packed Weight		
	gpm	lpm	ft	psi	m	V	W	A	Hp	kW	Rpm	Inches	cm	Inches	cm	Inches	cm	lbs	kg	
BC-2CP-MD Brush	6	22.7	15	6.5	4.6	12	42	3.5	1/25	0.029	3650	4.44	11.2	4.50	11.4	7.61	19.3	4	1.8	
BC-2CP-MD Brushless	6.2	23.4	29	12.5	8.8	24	50	2.1	1/25	0.029	3800	4.44	11.2	4.50	11.4	5.84	14.8	4	1.8	

All specifications & data are based on pumping water & are intended as a guideline only. Specifications may vary with different motors.



NOTE: When attaching the Drive Magnet to the motor shaft, position the face of the Drive Magnet 1/16 inch below the face of the Motor Bracket.

#	DESCRIPTION	MATERIAL	SIZE (Inches)		QTY.	Brush BC-2CP-MD	Brushless BC-2CP-MD
			Brush	Brushless			
1	Self-Tapping Screw	Stainless	#7-19 x 1-7/16 Lg.		6	0115-0062-1000	
2	Cover	Polypropylene	3/8 FPT x 3/4 MPT		1	0125-0056-1000	
3	"O" Ring	Viton	3/32 CS x 2-3/16 OD		1	0125-0065-1000	
		Buna N (Option)	3/32 CS x 2-3/16 OD		1	0125-0066-1000	
4	Thrust Washer	Ceramic			1	0130-0028-1000	
5	Shaft	Ceramic			1	0125-0061-1000	
		Stainless (Option)			1	0125-0125-1000	
6	Impeller Encapsulated	Polypropylene			1	0125-0087-0200	
7	Rear Housing	Polypropylene	1/4 MPT		1	0125-0058-1000	
8	Drive Magnet		0.250 Bore	6mm	1	0125-0083-0100	0125-0083-0200
9	Screw	Stainless	#8-32 x 3/4 Lg.		4	0210-0036-1000	
10	Washer	Stainless	#8		4	0858-0004-1000	
11	Motor Bracket	Plastic			1	0125-0069-1000	
12	Base	Plastic			1	0125-0106-1000	
13	Motor, 12 Volts DC				1	0809-0101-1000	
	Motor, 24 Volts DC				1	0809-0103-1000	0125-0128-1000

NOTE: Contact Factory for other materials and/or parts not listed.

0125-0076-1100 R4