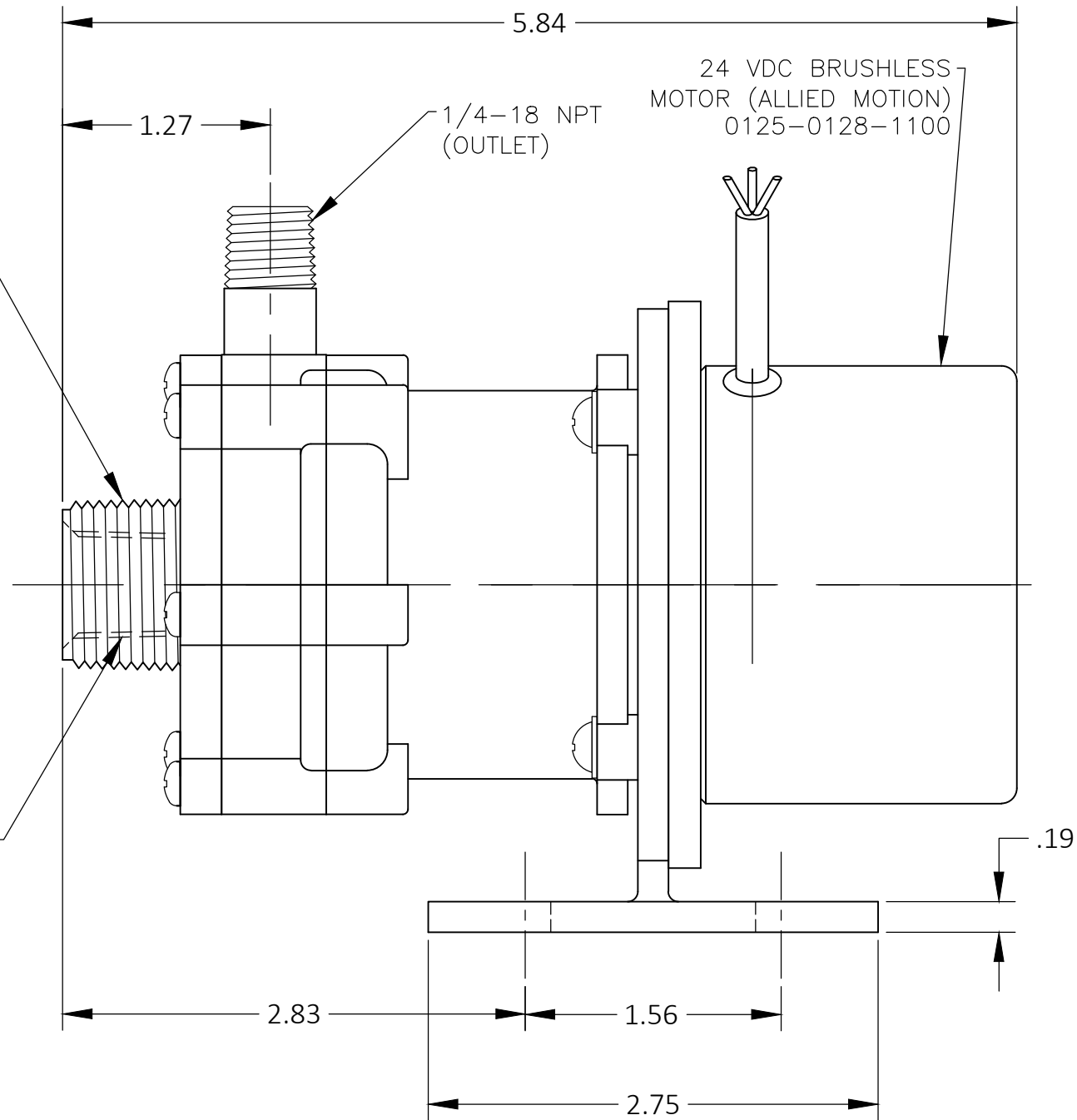


(3) WIRES  
(1) RED, (1) BLACK, (1) SHIELD  
11.8" LENGTH

3/4-14 NPT  
(INLET)

3/8-18 NPT  
(INLET)



24 VDC BRUSHLESS  
MOTOR (ALLIED MOTION)  
0125-0128-1100

1/4-18 NPT  
(OUTLET)

UNLESS NOTED OTHERWISE ALL DIMS ARE IN INCHES.		<div>MARCH MFG. INC.</div> <div>1819 PICKWICK AVE. GLENVIEW, ILLINOIS</div>	DRAWN	Dr Travis	04/27/2017	DRAWING SIZE	B-11x17	
<div>DIMS.</div> <div>0.000</div> <div>0.00</div> <div>FRACTIONS</div> <div>ANGLES</div>	<div>TOL.</div> <div>±0.005</div> <div>±0.03</div> <div>±1/64</div> <div>±1°</div>		CHECKED	HANS	04/27/2017	MOLD #		
			APPROVED		04/27/2017	FIXTURE #		
			FINISH		TOOL #			
						CUSTOMER		
						CUSTOMER #		
PART NAME			MATERIAL			PART NUMBER		REVISION
Dimensional Assy BC-2CP-MD 24VDC w/Base, Brushless						0125-0123-0400 d2		
THIS DOCUMENT DISCLOSED SUBJECT MATTER IN WHICH MARCH MFG. INC. HAS PROPRIETARY RIGHTS, NEITHER RECEIPT NOR POSSESSION THEREOF CONFERS OR TRANSFERS ANY RIGHT TO REPRODUCE OR DISCLOSE THE DOCUMENT, ANY PART THEREOF, ANY INFORMATION CONTAINED THEREIN, OR ANY PHYSICAL ARTICLE OR DEVICE OR TO PRACTICE ANY METHOD OR PROCESS, EXCEPT BY WRITTEN PERMISSION FROM OR WRITTEN AGREEMENT WITH MARCH MFG. INC.								
REV.		INITIALS		DATE		E.C.O.		CHANGE